



WE MINE FOR  
PROGRESS



# Project update

Peter Mizera - General Manager Las Bambas Delivery

April 2015

# Important Information

---

The information contained in this presentation is intended solely for your personal reference and may not be reproduced, redistributed or passed on, directly or indirectly, to any other person (whether within or outside your organisation/firm) or published, in whole or in part, for any purpose without the prior written consent of the Company. No representation or warranty express or implied is made as to, and no reliance should be placed on, the fairness, accuracy, completeness or correctness of the information or opinions contained in this presentation. It is not the intention to provide, and you may not rely on this presentation as providing, a complete or comprehensive analysis of the Company's financial or trading position or prospects. The information contained in this presentation should be considered in the context of the circumstances prevailing at the time and has not been, and will not be, updated to reflect material developments which may occur after the date of the presentation. None of the Company nor any of its respective affiliates, advisors or representatives shall have any liability whatsoever (in negligence or otherwise) for any loss or damage howsoever arising from any use of this presentation or its contents or otherwise arising in connection with this presentation.

This presentation includes forward-looking statements. Forward-looking statements include, but are not limited to, the company's growth potential, costs projections, expected infrastructure development, capital cost expenditures, market outlook and other statements that are not historical facts. When used in this presentation, the words such as "could," "plan," "estimate," "expect," "intend," "may," "potential," "should," and similar expressions are forward-looking statements. Although MMG believes that the expectations reflected in these forward-looking statements are reasonable, such statements involve risks and uncertainties and no assurance can be given that actual results will be consistent with these forward-looking statements.

This presentation may contain certain information derived from official government publications, industry sources and third parties. While we believe inclusion of such information is reasonable, such information has not been independently verified by us or our advisers, and no representation is given as to its accuracy or completeness.

This presentation does not constitute an offer or invitation to purchase or subscribe for any securities in the United States or any other jurisdiction and no part of it shall form the basis of or be relied upon in connection with any contract, commitment or investment decision in relation thereto, nor does this presentation constitute a recommendation regarding the securities of the Company. This presentation is not for distribution in the United States. Securities may not be offered or sold in the United States absent registration or exemption from registration under the US Securities Act. There will be no public offering of the Company's securities in the United States.

# Project Snapshot

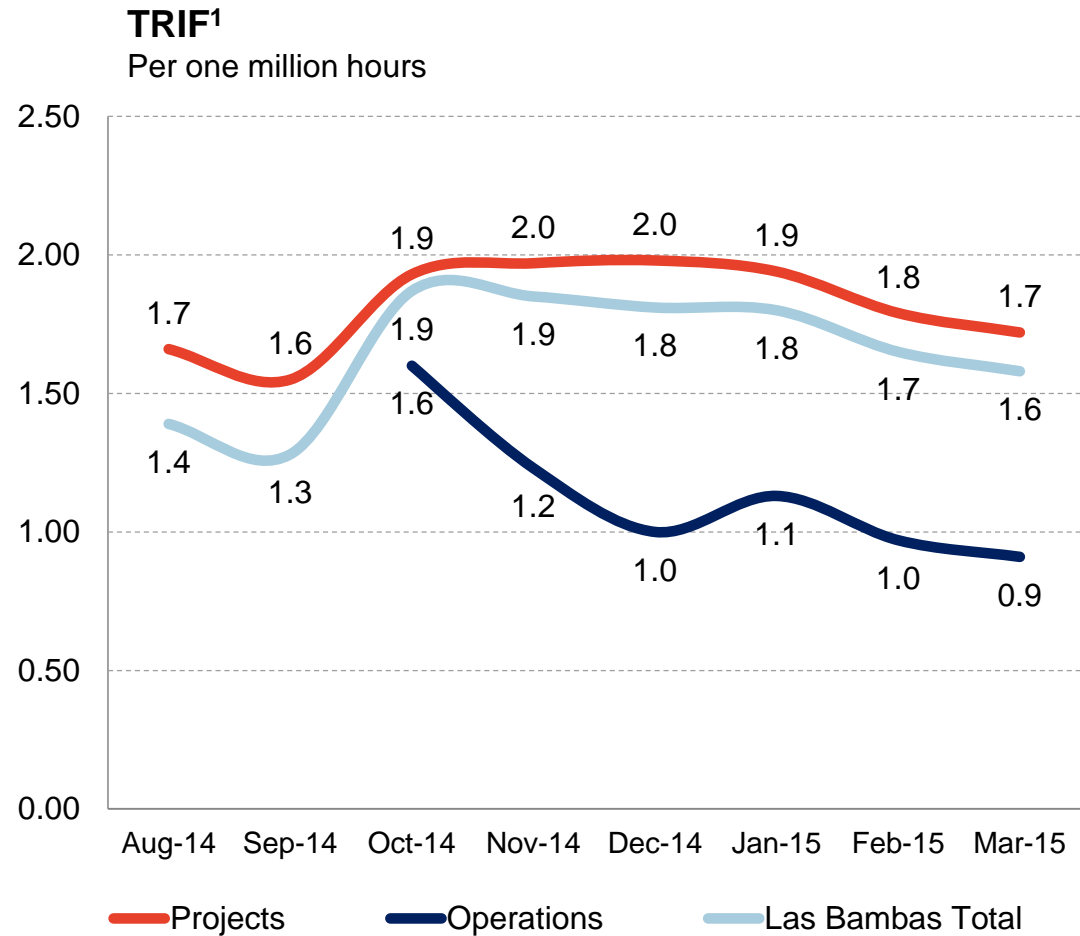
---

- > Proven design and equipment.
- > Experienced Owner's team and contractors.
- > Project risks largely mitigated.
- > Construction well advanced at 90%.
- > Pre-commissioning activities have commenced.
- > On schedule for first concentrate Q1, 2016.
- > Capital expenditure to complete within expected range of US\$1.9–2.4 billion from 1 January 2015.



# Continued focus on reducing injuries

- > Las Bambas has adopted MMG safety standards, processes and systems.
- > Current workforce at peak.
- > Environment transitioning from construction to commissioning.



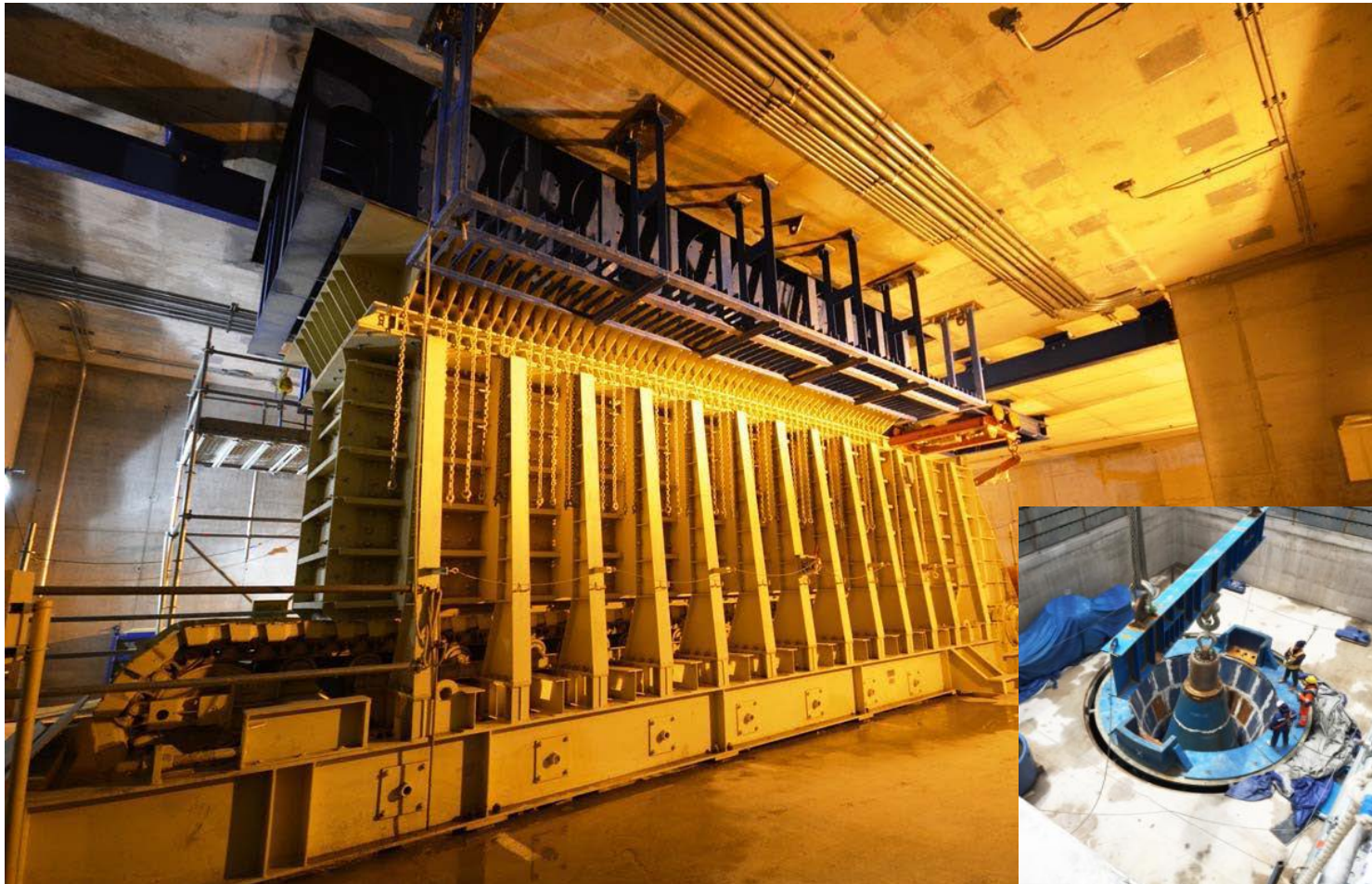
# Fuel tanks and shovel assembly area

---



# Primary Crusher

---



# Overland Conveyor

---



# Mill Feed Conveyors

---





# Concentrator

---



# Molybdenum Plant

---



# Concentrate Thickeners

---



# Concentrate Storage Shed

---



# Freshwater Intake

---



# Tailings Storage Facility (TSF)

---



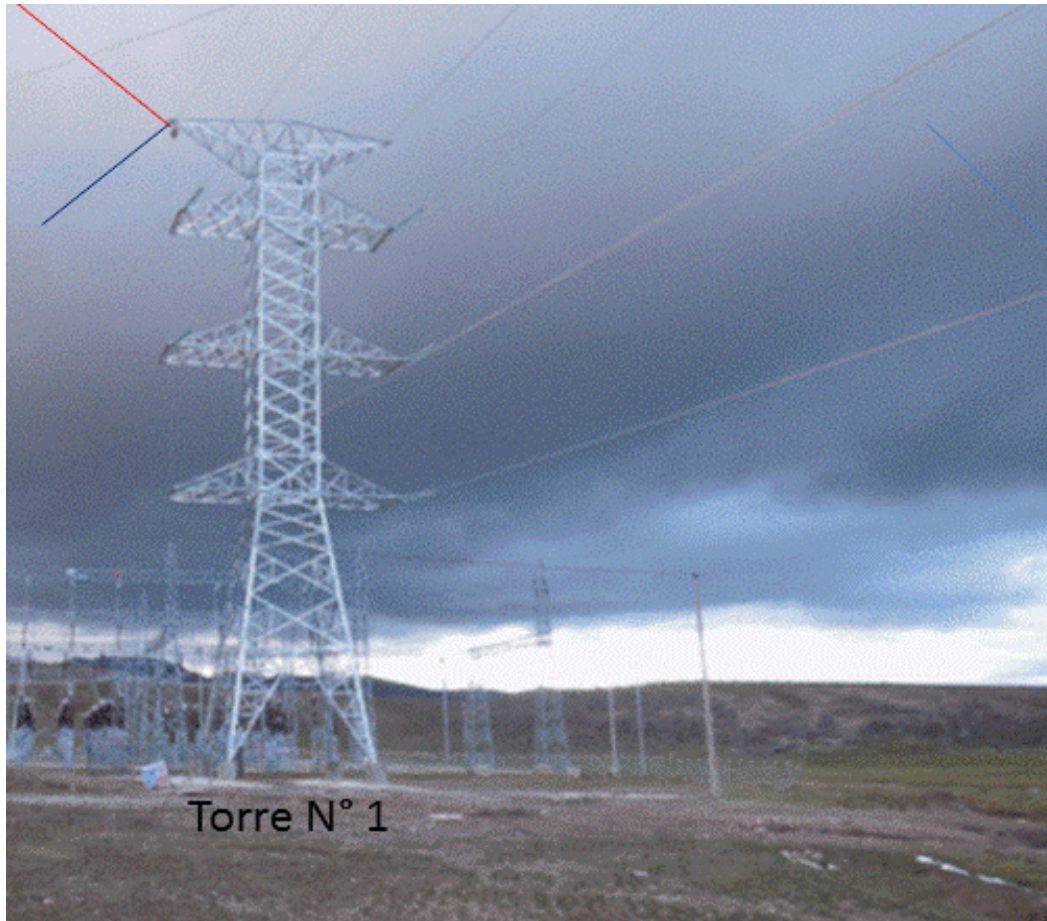
# Main Camp (MCC)

---



# 220kV Power Transmission Line

---





# Matarani Port

CERRO VERDE SHED

LAS BAMBAS SHED

PIPE CONVEYOR TO BERTH F SHIPLOADER



ANTAPACCAY SHED

LAS BAMBAS RAIL UNLOADING

RAIL

# Matarani Port

---



# Project phase definitions

---

## Construction

Physical installation of facilities. Tests to ensure that the materials or equipment installed, meets design engineering and standards and is in operable condition.

## Pre-Commissioning

Function test facilities and equipment on water. Functional verification of integrated control system.

## Commissioning

Operation test facilities with ore feed to ensure that the operation can be performed continuously and safely within the nominal parameters of the equipment. Quality parameters of the final product.

## Ramp Up

Operating the facilities to gradually increase capacity to the design parameters.

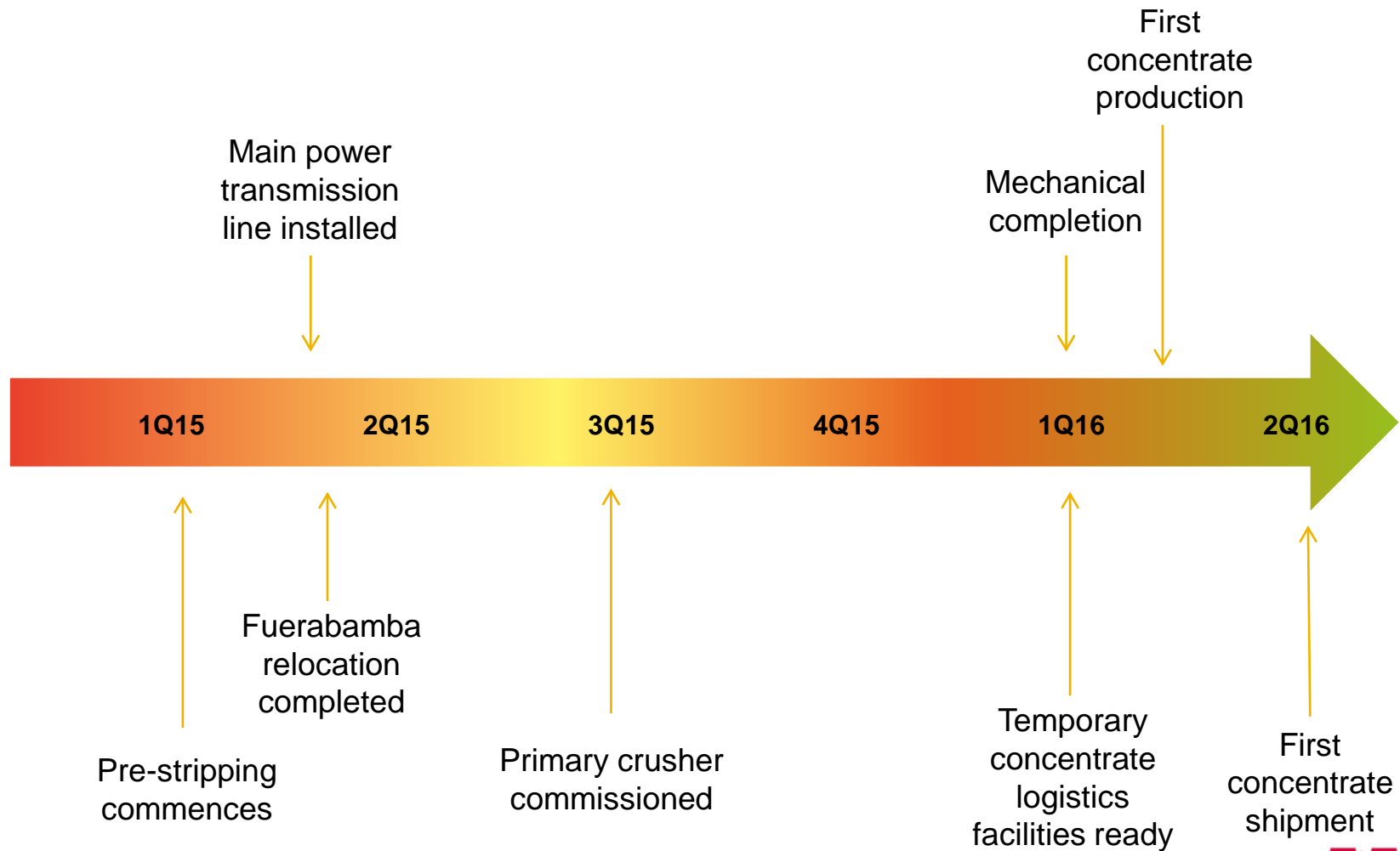
## Continuous Operations

Ongoing maintenance and operation of facilities, continuously and within design parameters.

Projects accountability

Operation accountability

# Las Bambas milestones



# Summary

---

- > Las Bambas construction is nearing completion.
- > Risks have been identified and are being managed.
- > The project was 90% complete as at 31 March 2015.
- > Pre-commissioning activities have commenced.
- > On target for first concentrate production Q1, 2016.
- > Capital expenditure required to complete the Las Bambas project within the range of US\$1.9–2.4 billion from 1 January 2015.





**WE MINE FOR  
PROGRESS**