

MINING THE MIDWEST

MMG GOLDEN GROVE

Thursday 25 February 2010



SECTION 1.0

MINERALS AND METALS GROUP AN OVERVIEW

MINERALS AND METALS GROUP - MMG

- > Formed in June 2009 from the sale of assets from OZ Minerals to China Minmetals.
- > MMG operates a portfolio of world-class base metal mining operations, development projects and exploration fields.
- > Mining operations are located in Australia and Asia and advanced and early stage exploration projects in Australia, Asia and North America.
- > MMG is the world's second largest producer of zinc as well as a substantial producer of copper, lead, gold and silver.



OVERVIEW OF OPERATIONS AND ADVANCED EXPLORATION PROJECTS

MAP KEY: ● Operation ● Care and Maintenance
● Advanced Project ○ Group Office



MMG'S VISION AND MISSION

Vision Building the next generation's leading global diversified minerals and metals company.

Mission We will maximise our returns by discovering, acquiring, developing and sustainably operating resources projects around the world.



SECTION 2.0

GOLDEN GROVE A CASE STUDY

MMG GOLDEN GROVE

Location:	Western Australia, Australia
Ownership:	100% MMG
Mine:	Underground, sublevel open stope
Throughput:	1.7 Mtpa, mine, crush, grind, float
Product:	Zinc concentrate, Copper concentrate, precious metals concentrate.
Reserves:	5.7 Mt @ 2.3% Cu, 4.6% Zn, 0.6% Pb, 0.9 g/t Au, 42 g/t Ag
Resources:	36Mt containing 781kt Cu, 1400kt Zn, 127kt Pb, 1.0Moz Au, 44Moz Ag
CY2009 production:	57kt Zn, 31 Kt Cu, 4 Kt Pb 29 Koz Au, 1.4 Moz Ag

Estimated mine life: 9 years

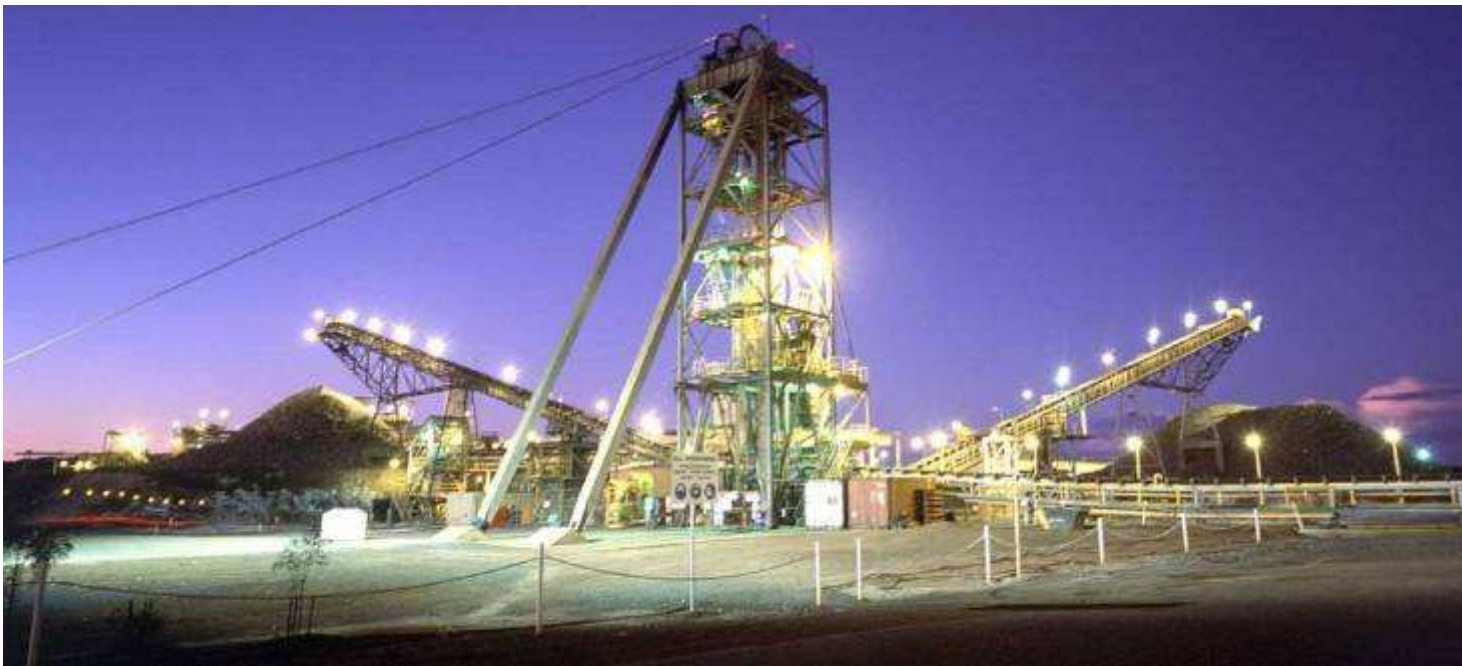


TWO MINES, ONE OPERATION

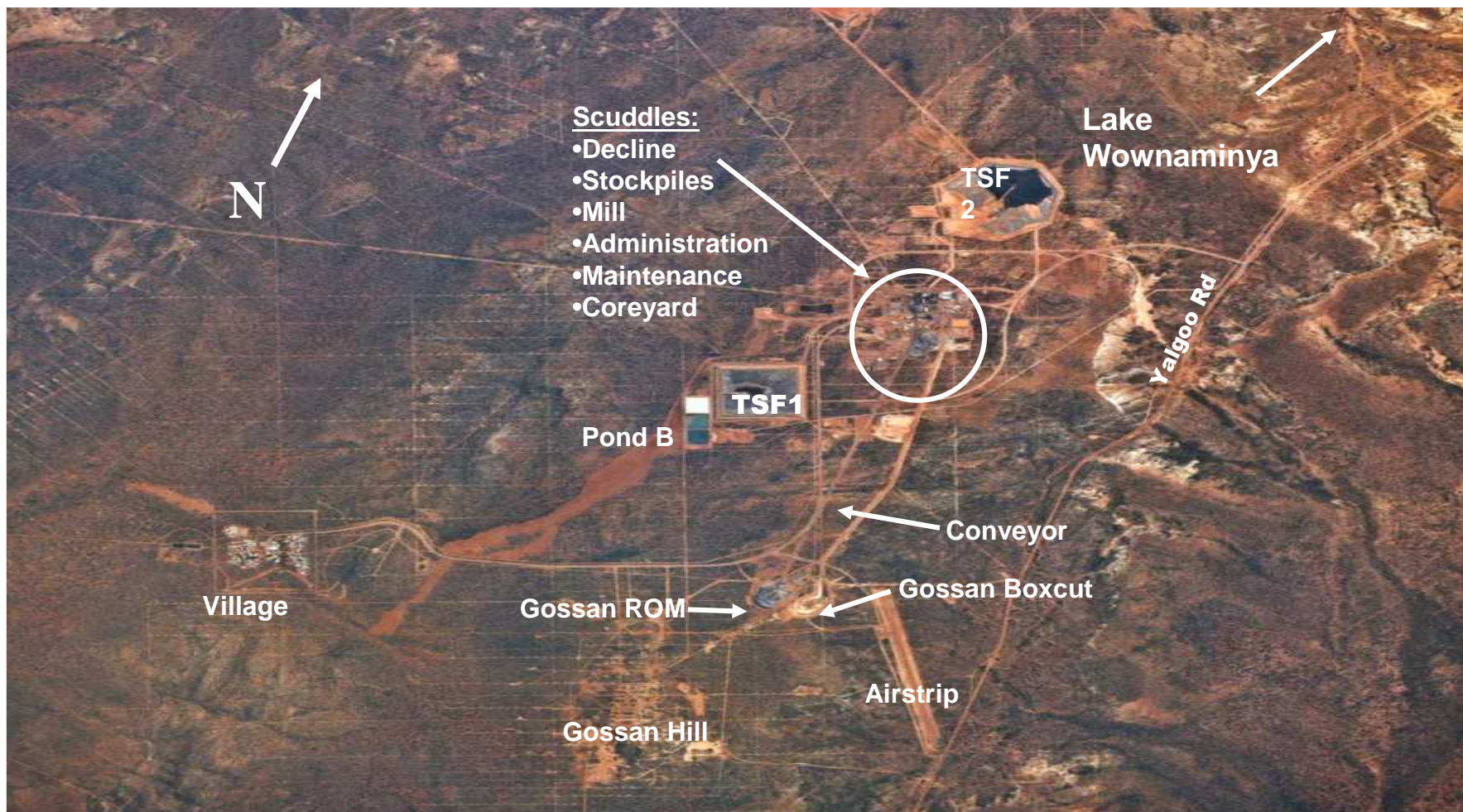
Two underground mines, Gossan Hill and Scuddles

Gossan Hill: Discovery 1971, Production commenced 1998

Scuddles: Discovery 1979, Production commenced 1990

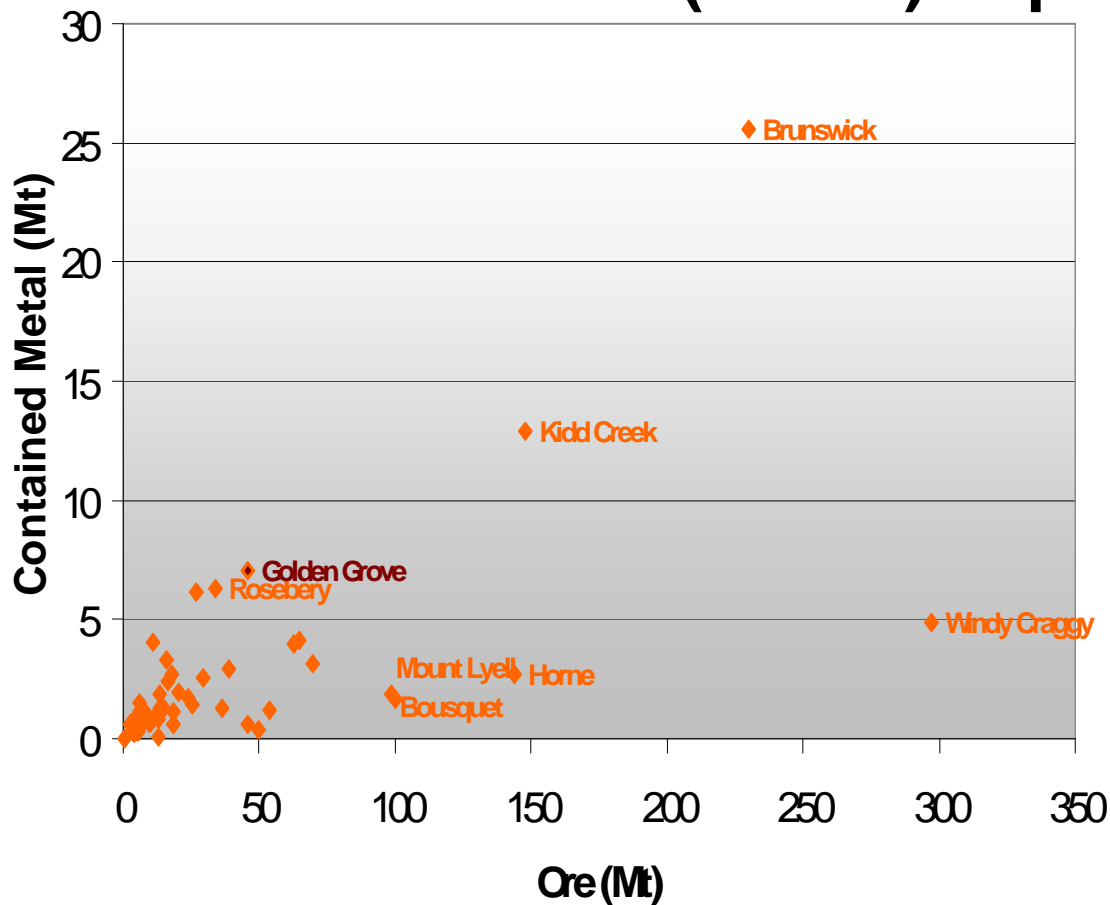


GOLDEN GROVE SITE LAYOUT



WORLD CLASS VHMS DEPOSIT

A world-class Volcanic Hosted Massive Sulphide (VHMS) deposit



Milled Production (to Dec 2009):

15.4 Mt at 12.2% Zn

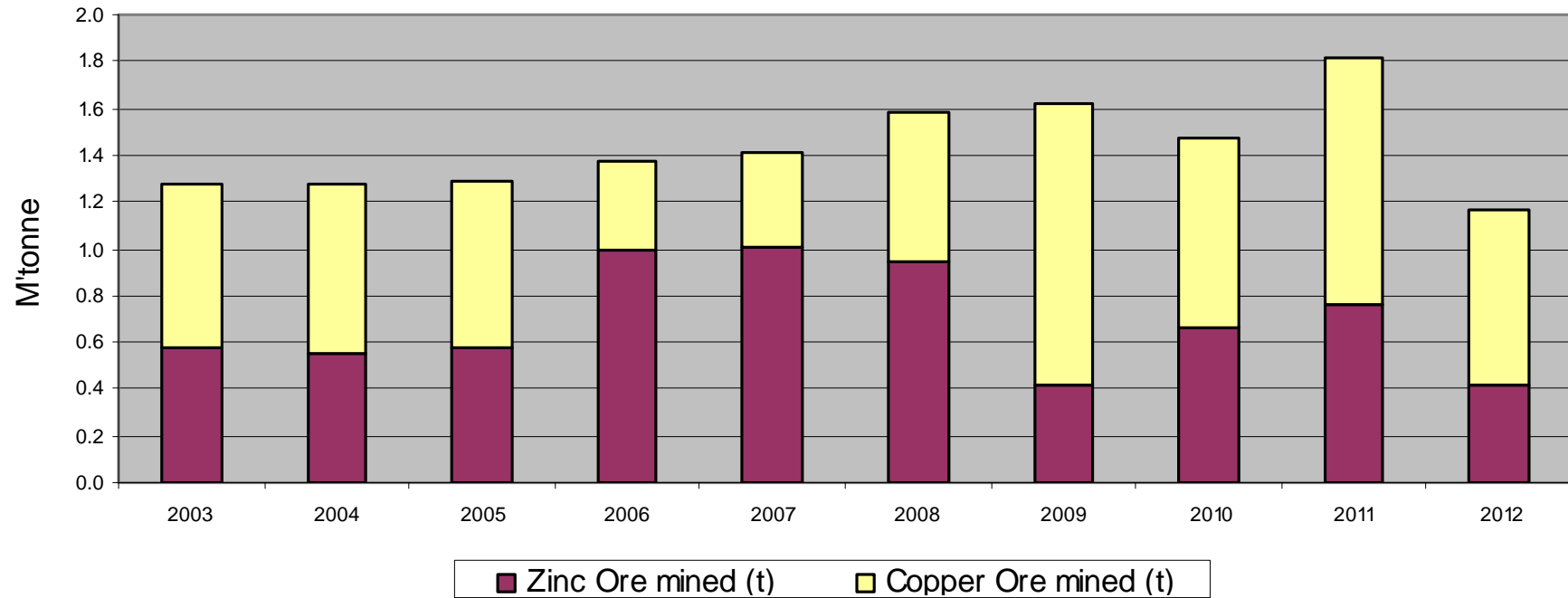
6 Mt at 3.8% Cu

47.8 Moz Ag

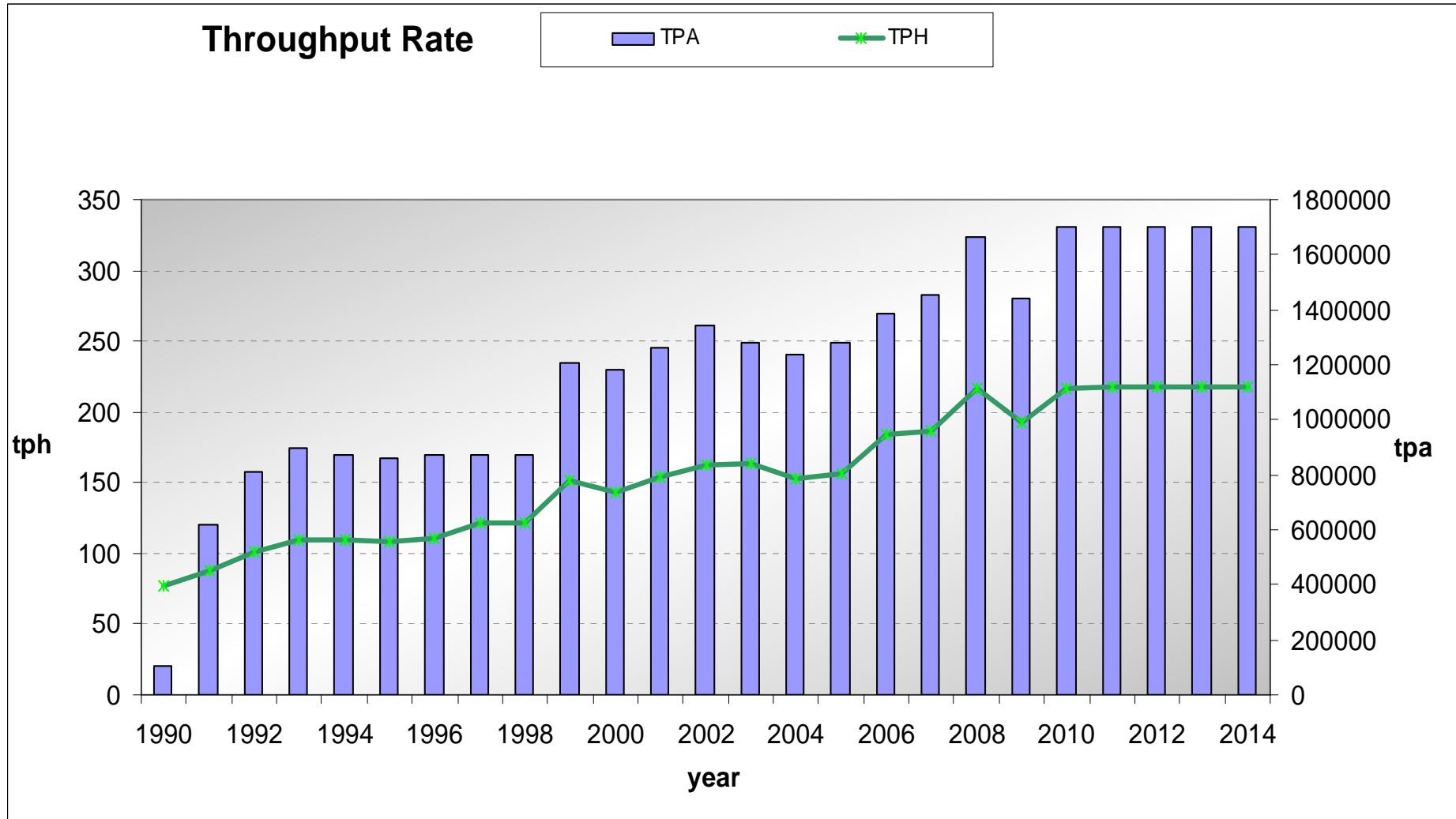
0.64 Moz Au

One of the top 5 VHMS deposits worldwide in contained metal

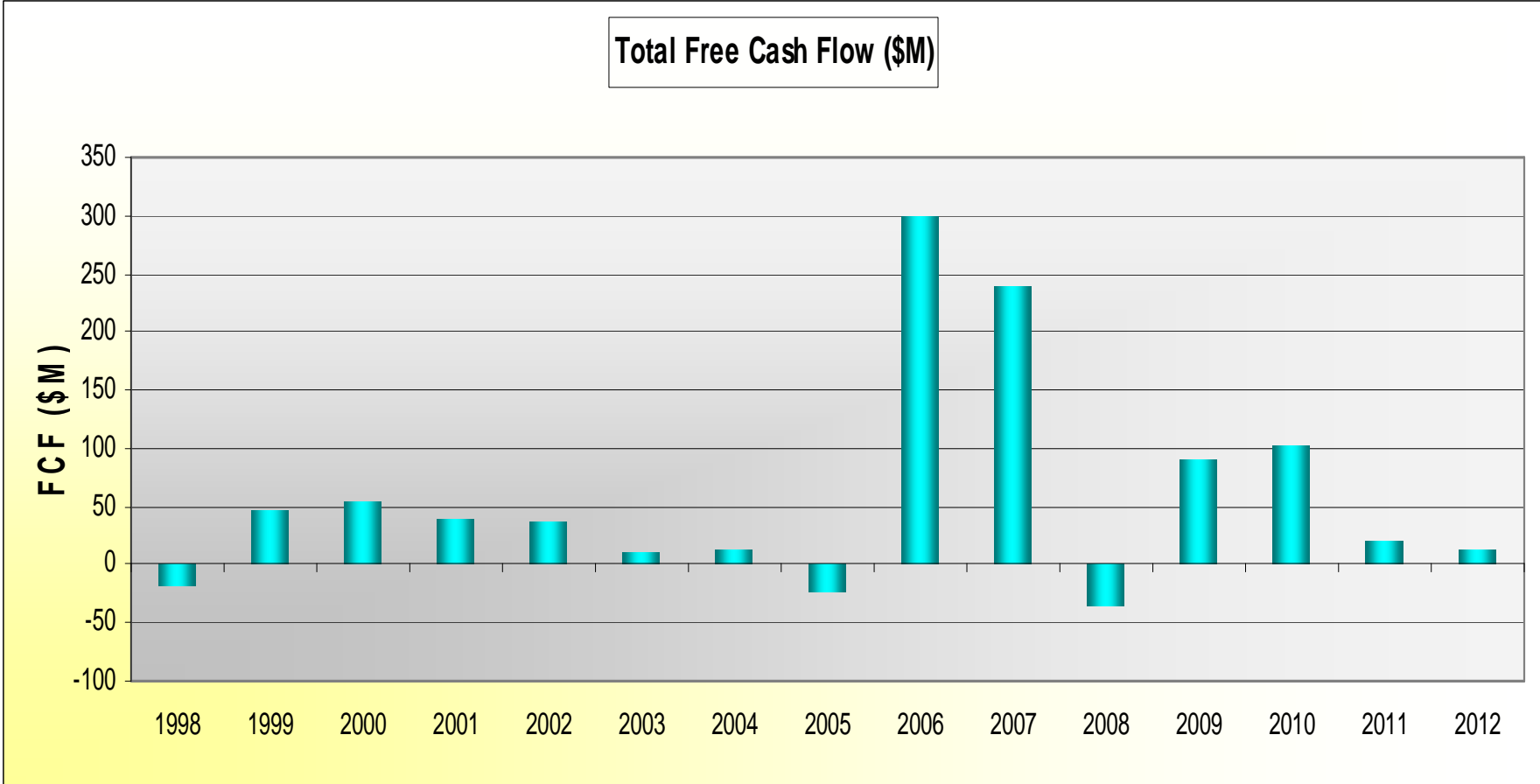
GOLDEN GROVE ORE MINED



GOLDEN GROVE MILL THROUGHPUT



TOTAL FREE CASH FLOW (\$M)



PEOPLE WORKING AT GOLDEN GROVE

Mining	210
Metallurgy/Mill	54
Engineering	146
Exploration/Geology	47
Projects	9
HR/Admin/Training/Fac	57
Commercial	20
Health and Safety	8
Community and Environment	3
TOTAL	554



REGIONAL ECONOMIC IMPACT

Financial Support (2009)

Goods and Services: \$15m per annum

Wages: \$21m per annum

Community investment: ~\$900,000
(financial and in kind)



Bayalgu Indigenous Training Program

> Partnering with the with WA Government and other private supporters to offer this unique program.

> Aims to develop a range of entry-level work readiness skills and competencies.

> Helps prepare Indigenous trainees for entry into the resources, civil construction and associated services industries.



SECTION 3.0

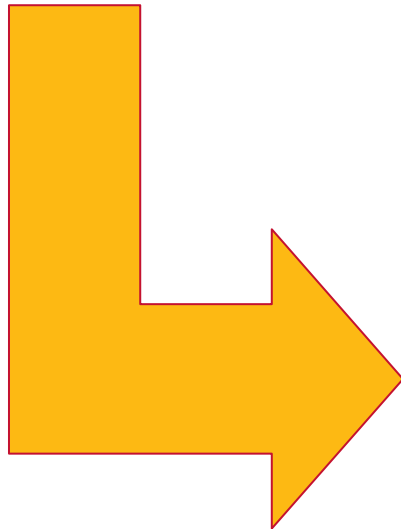
TACKLING A VOLATILE MINERALS MARKET

COMPETITIVE CASH COSTS

2009 Golden Grove C1 Costs

Zinc: US\$ 928 per tonne

Copper: US\$4,165 per tonne

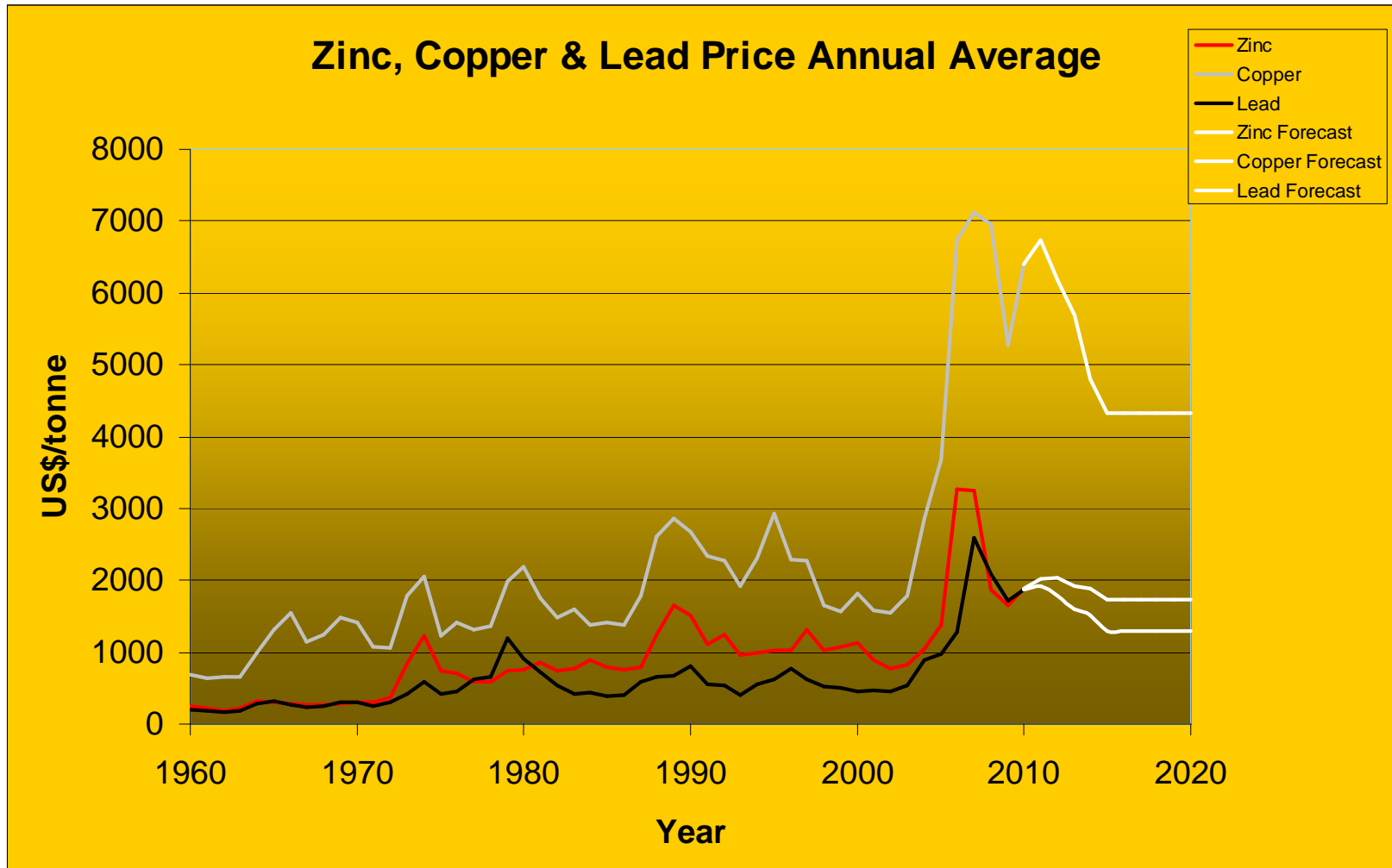


2009 Average LME Prices

Zinc: US\$1,646 per tonne

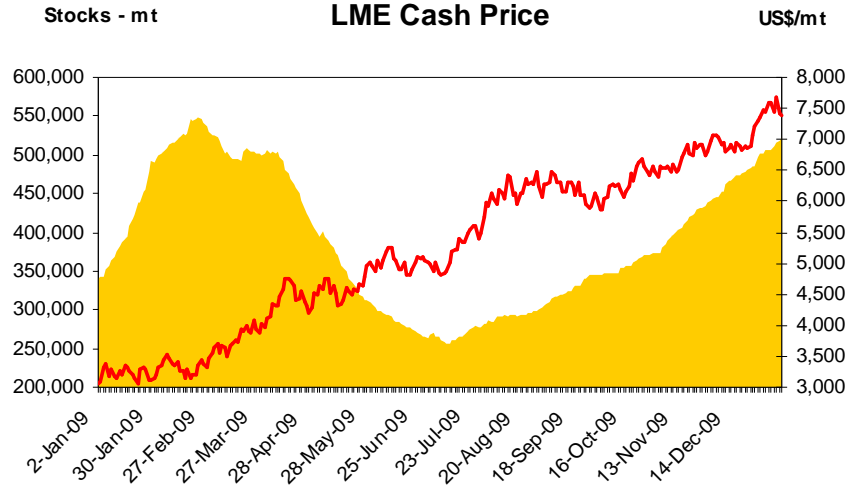
Copper: US\$5,132 per tonne

SECTION 3.0

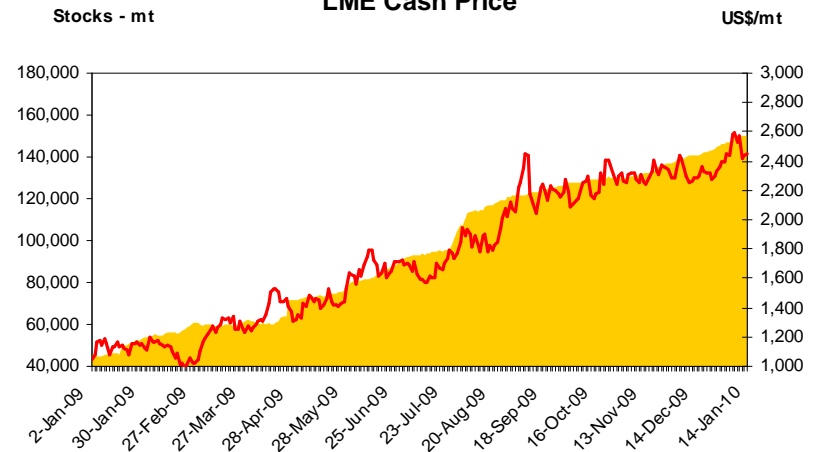


STRONG DEMAND AND PRICE FOR GOLDEN GROVE'S METALS IN 2010

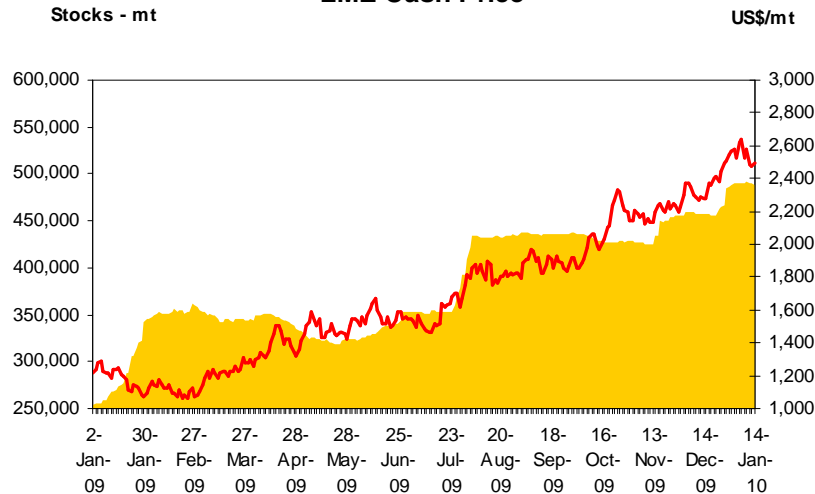
LME Copper Stocks compared to LME Cash Price



LME Lead Stocks compared to LME Cash Price



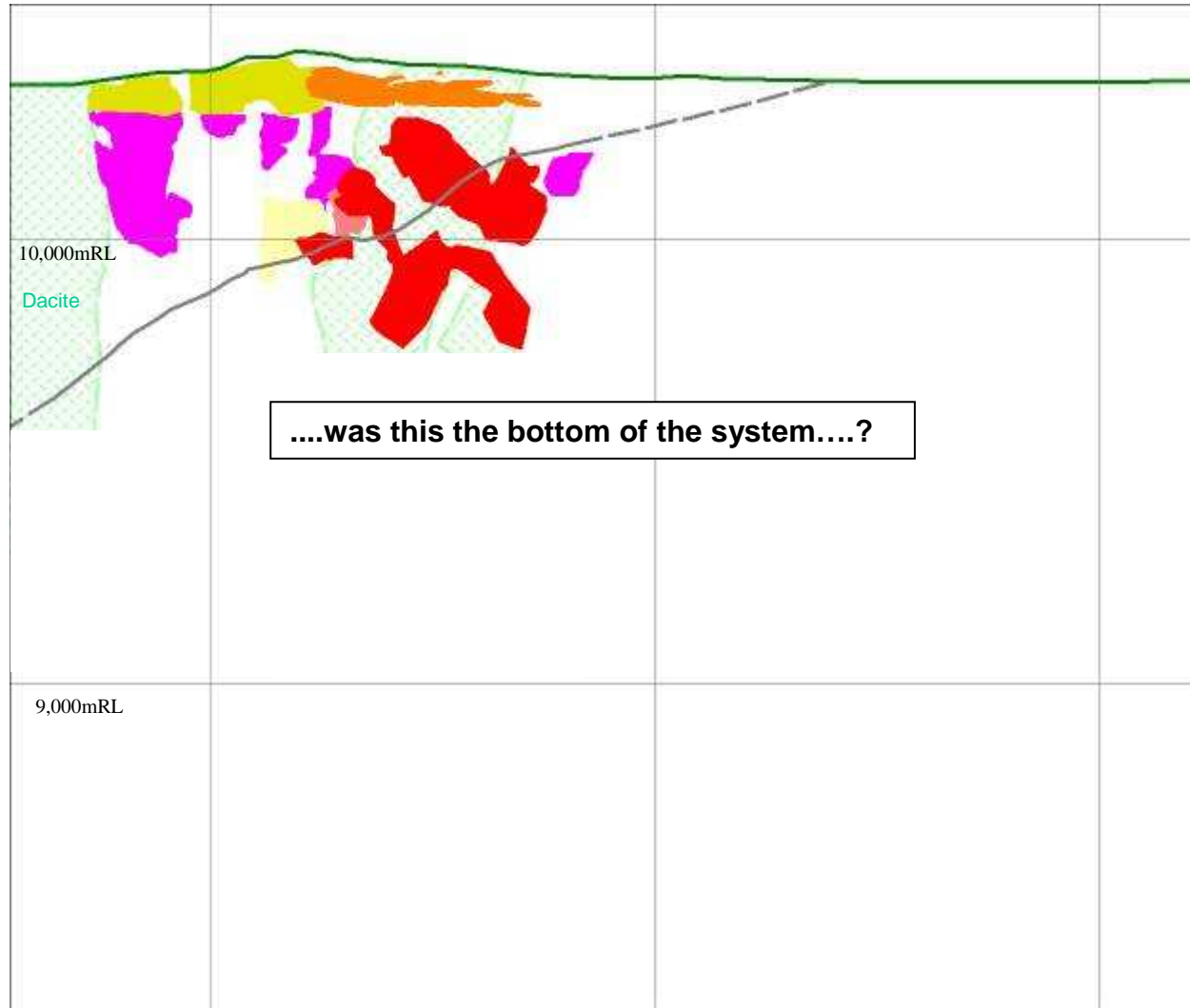
LME Zinc Stocks compared to LME Cash Price



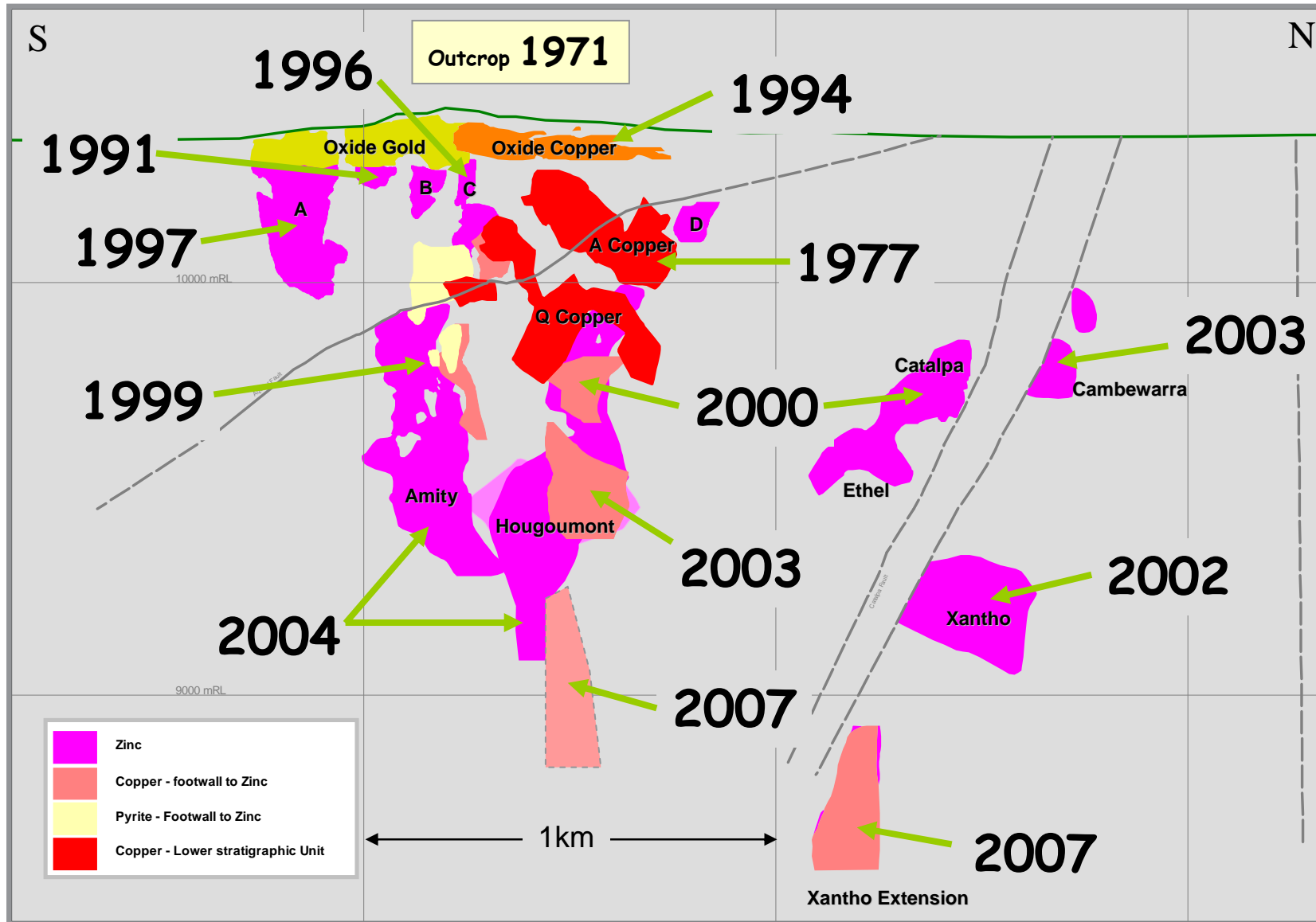
SECTION 4.0

FUTURE POTENTIAL THROUGH EXPLORATION SUCCESS

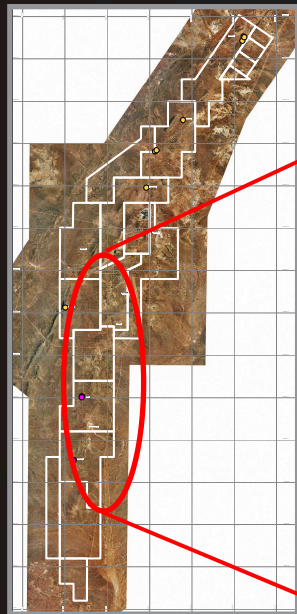
GOSSAN HILL RESOURCES PRE-1999



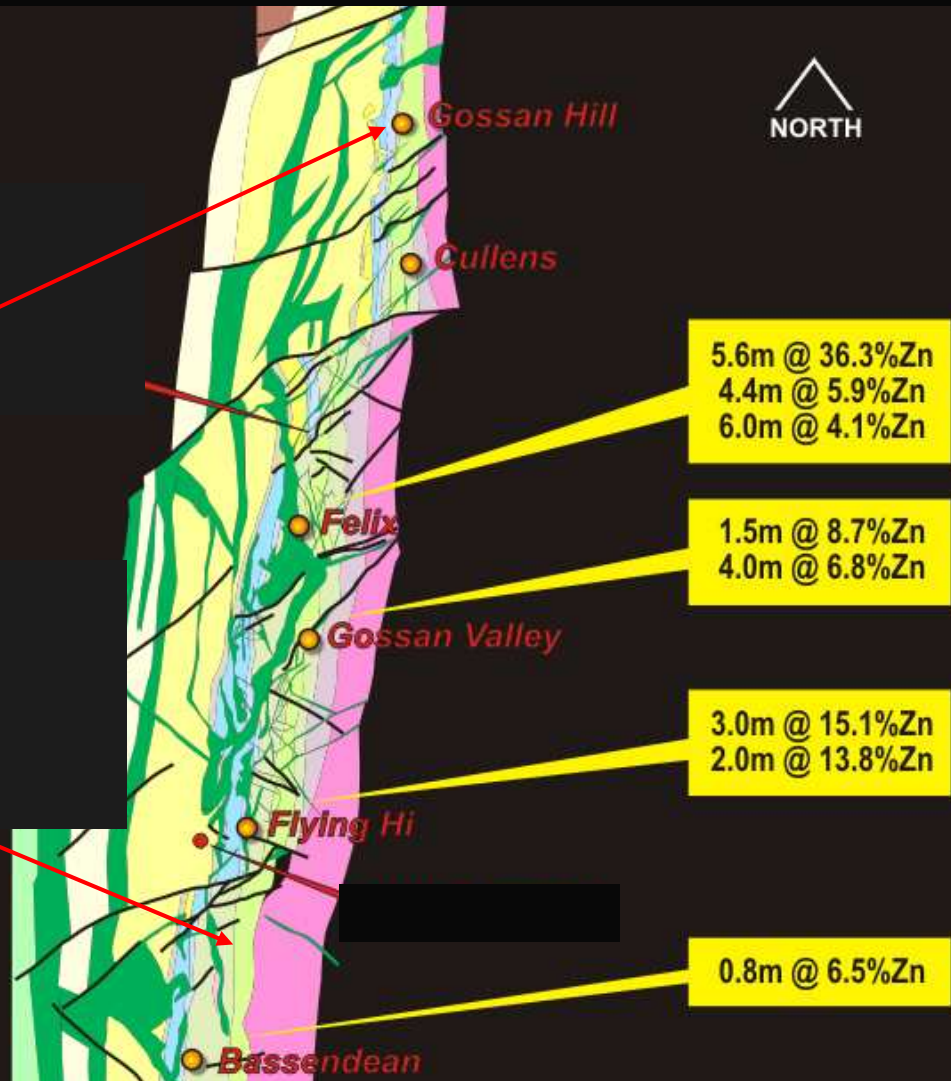
DISCOVERY HISTORY AT GOSSAN HILL



GOLDEN GROVE SOUTHERN DISTRICT



2500m

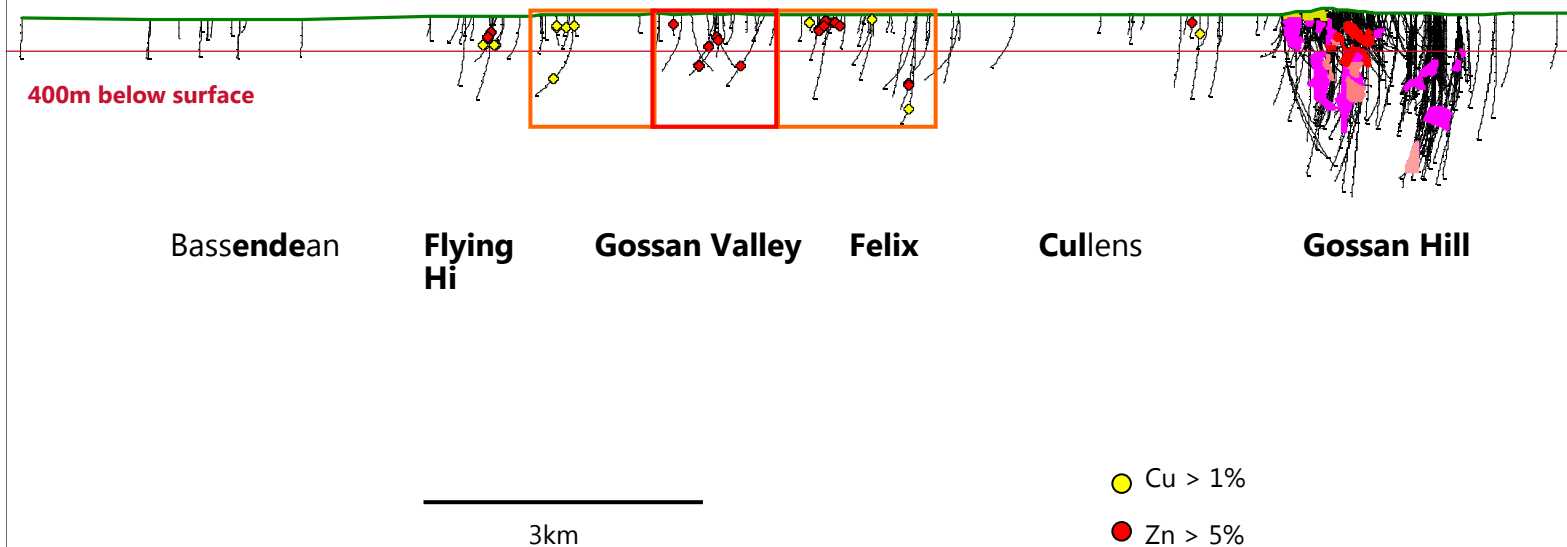


- Re-logging old holes
- Review RAB/RC data
- Geological Mapping
- Re-process Magnetics
- Re-process Gravity
- Re-process EM
- Project Geologist
- Complete our homework
- Drill 2008

GOLDEN GROVE BELT - SOUTH

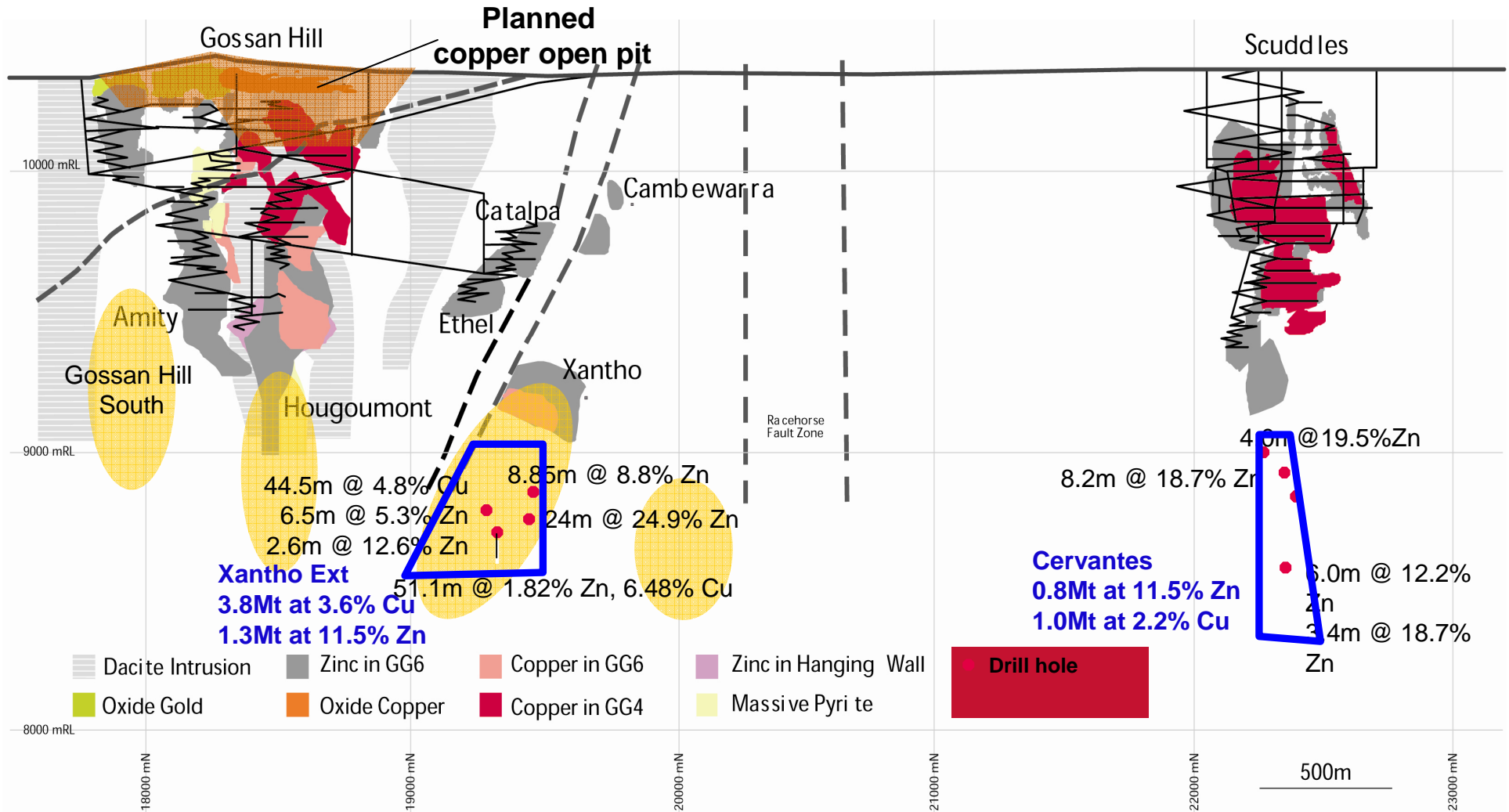
Diamond Drill Coverage

Southern Leases



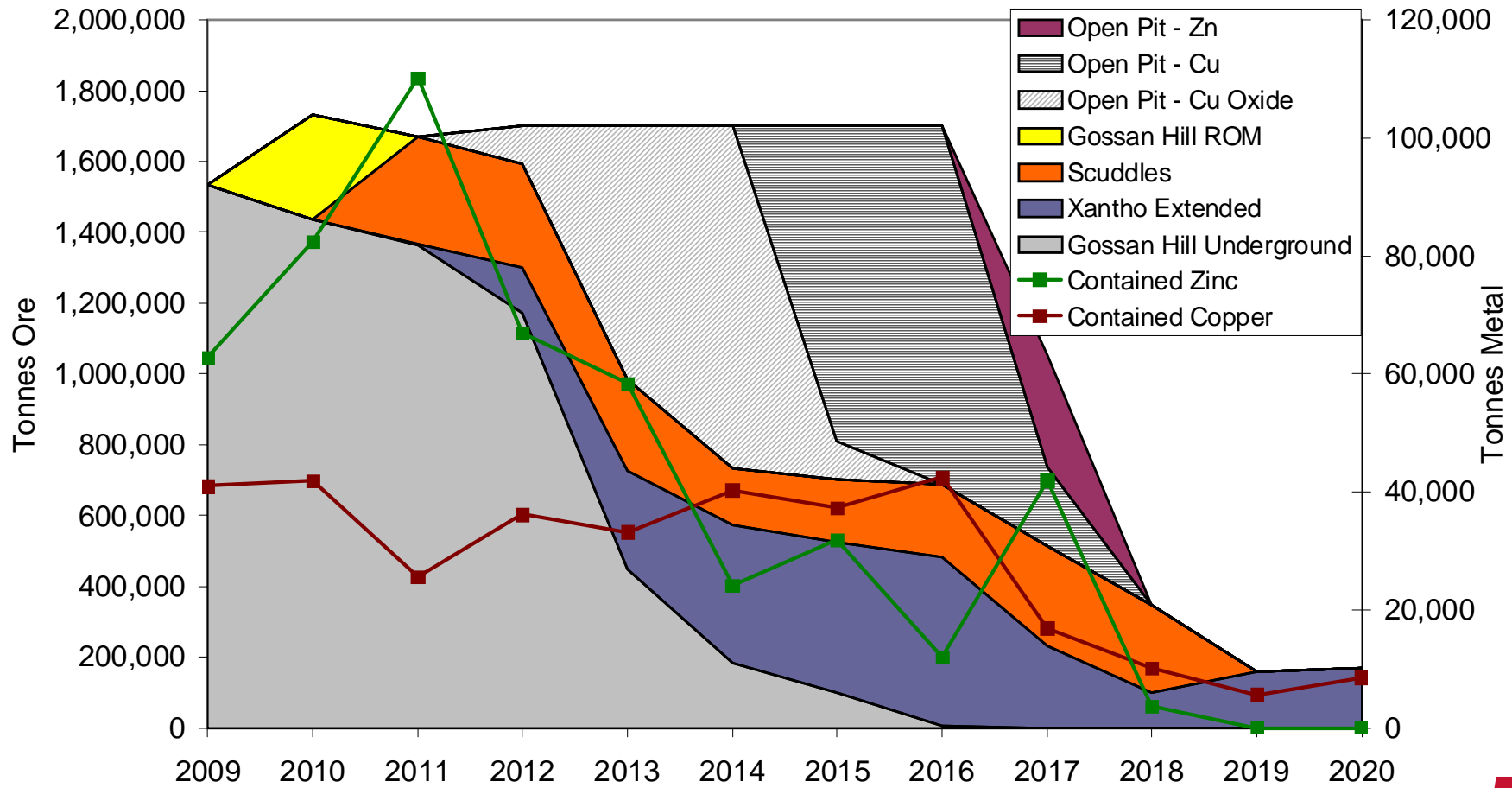
GOLDEN GROVE

Mine Life Extensions – Underground and Open Pit

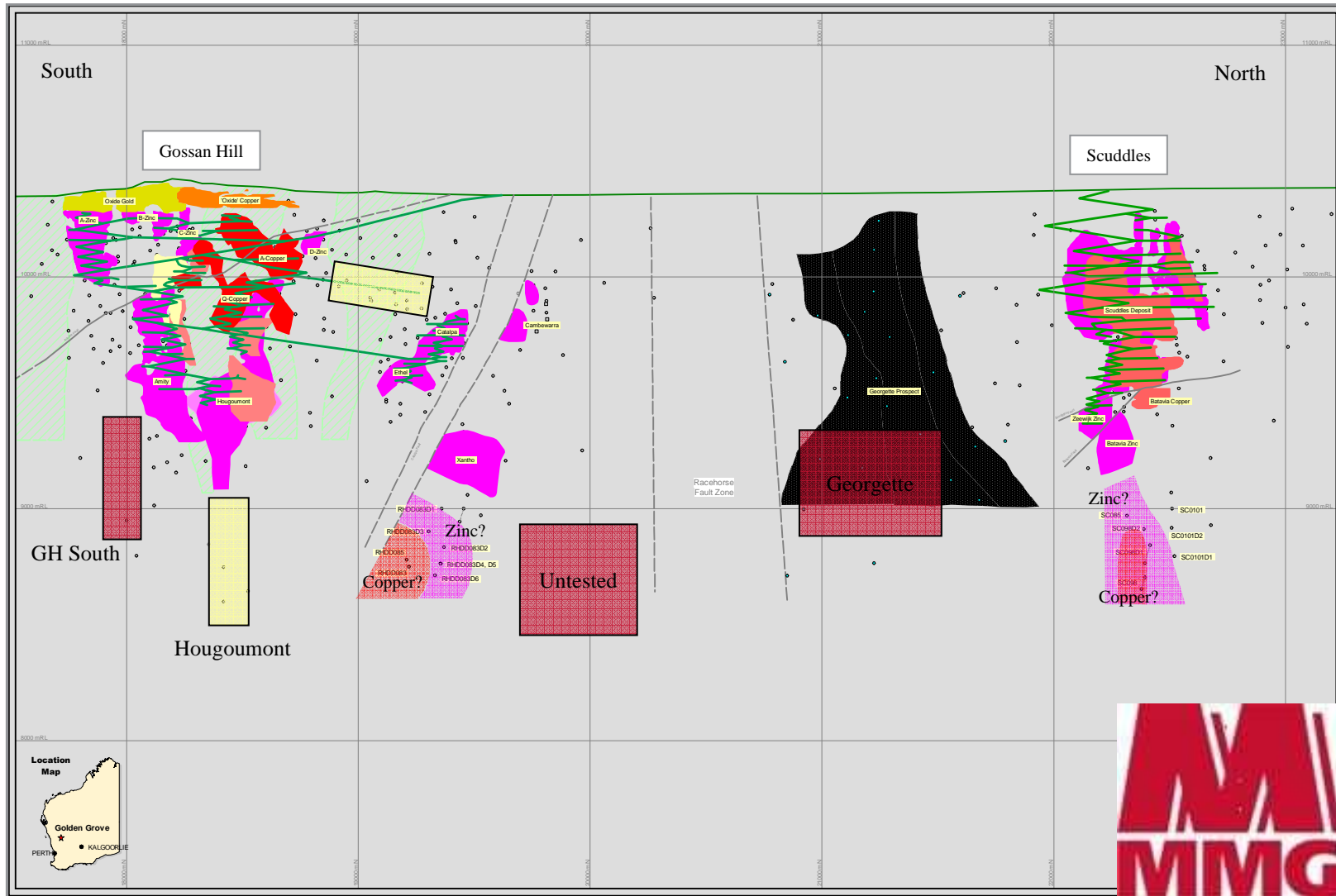


GOLDEN GROVE PRELIMINARY LOM

Golden Grove Life of Mine Plan - Preliminary



GOSSAN HILL, SCUDDLES...WHERE NEXT?



THANK YOU

Questions?

