

# Rosebery Mine Community Update



WE MINE FOR  
PROGRESS



**ROSEBERY**

**85** years of  
history

February 2023

# Welcome and mine overview

**STEVE SCOTT**

*Rosebery Mine General Manager*



WE MINE FOR  
PROGRESS





# Acknowledgment of Country

We acknowledge the Traditional Owners of the land where this meeting is taking place, and recognise Aboriginal people's continuing connection to Land, Sea, Waterways, Sky and Culture.

We pay our respects to Elders, past and present, and acknowledge any Aboriginal people who are present today.

# Housekeeping

- Emergency exits
- Bathrooms
- Refreshments
- Opportunity for questions
  - Open to questions at the end of the presentation
  - Question sheet on your table
- Respectful behaviour
- Mobile phones – silent or turn off



# Disclaimer

The information contained in this presentation is intended solely for your personal reference and may not be reproduced, redistributed or passed on, directly or indirectly, to any other person (whether within or outside your organisation/firm) or published, in whole or in part, for any purpose. No representation or warranty express or implied is made as to, and no reliance should be placed on, the fairness, accuracy, completeness or correctness of the information or opinions contained in this presentation. It is not the intention to provide, and you may not rely on this presentation as providing, a complete or comprehensive analysis of the Company's financial or trading position or prospects. The information contained in this presentation should be considered in the context of the circumstances prevailing at the time and has not been, and will not be, updated to reflect material developments which may occur after the date of the presentation. None of the Company nor any of its respective affiliates, advisors or representatives shall have any liability whatsoever (in negligence or otherwise) for any loss or damage howsoever arising from any use of this presentation or its contents or otherwise arising in connection with this presentation.

This presentation includes forward-looking statements. Forward-looking statements include, but are not limited to, the company's growth potential, costs projections, expected infrastructure development, capital cost expenditures, market outlook and other statements that are not historical facts. When used in this presentation, the words such as "could," "plan," "estimate," "expect," "intend," "may," "potential," "should," and similar expressions are forward-looking statements. Although MMG believes that the expectations reflected in these forward-looking statements are reasonable, such statements involve risks and uncertainties and no assurance can be given that actual results will be consistent with these forward-looking statements.

This presentation may contain certain information derived from official government publications, industry sources and third parties. While we believe inclusion of such information is reasonable, such information has not been independently verified by us or our advisers, and no representation is given as to its accuracy or completeness.

This presentation does not constitute an offer or invitation to purchase or subscribe for any securities in the United States or any other jurisdiction and no part of it shall form the basis of or be relied upon in connection with any contract, commitment or investment decision in relation thereto, nor does this presentation constitute a recommendation regarding the securities of the Company. This presentation is not for distribution in the United States. Securities may not be offered or sold in the United States absent registration or exemption from registration under the US Securities Act. There will be no public offering of the Company's securities in the United States.

# Community update agenda

- Mine overview and exploration program
- Tailings – what they are, and how they are stored safely
- Project assessment & approval process
- Planning for the future
- Questions





- The Rosebery Mine is now in its 87<sup>th</sup> year of production and is one of the oldest continually operating mines in Australia.
- We employ over 500 employees and contractors and support a network of suppliers and customers from across Tasmania. Our economic contribution not just within our own industry but others also, is significant.
- The Rosebery mine produces zinc, lead and copper concentrates, along with gold and silver dore.



# Why is it important to mine our minerals?

- Zinc, lead and copper are crucial in the clean energy transition, and contribute to the global goal of net zero emissions by 2050.
- How? The minerals we mine are used to produce technologies and products that support a low carbon emissions footprint.
- These products include solar panels, wind turbines, electric vehicles and large-scale batteries.
- Without the contribution of our minerals, these products can not be developed.



Source: [Types of Solar Panels for Homes \(architecturaldigest.com\)](https://www.architecturaldigest.com/story/types-of-solar-panels-for-homes)



Source: [Electric Vehicles and the Effect on the Metal Market | General Kinematics](#)



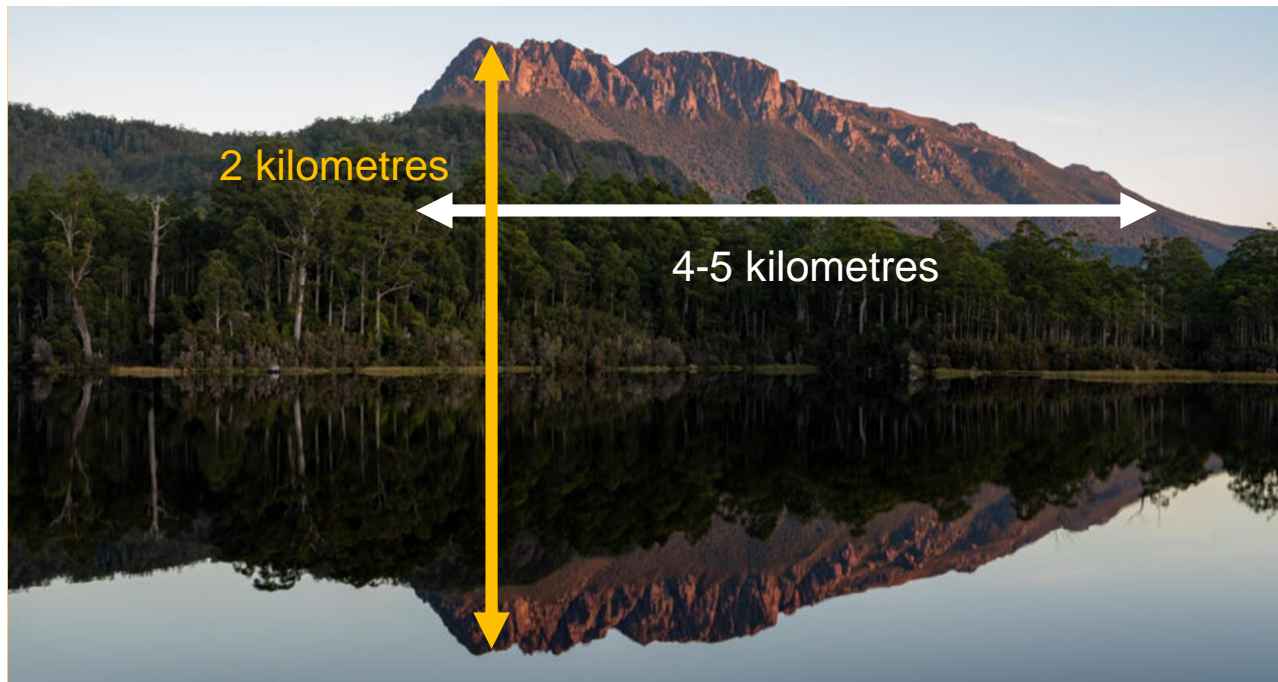
# What we mine - Rosebery ore body deposit



# What we mine - Rosebery ore body deposit

## Did you know...

- The length of Mount Murchison is approximately the same size as the ore body we mine underground. That's between **4-5 kilometres**.
- The height of Mount Murchison is 1,000 metres. Double that distance, and it's the length we go below the surface to access and mine the ore body (**2 kilometres**).



Mount Murchison



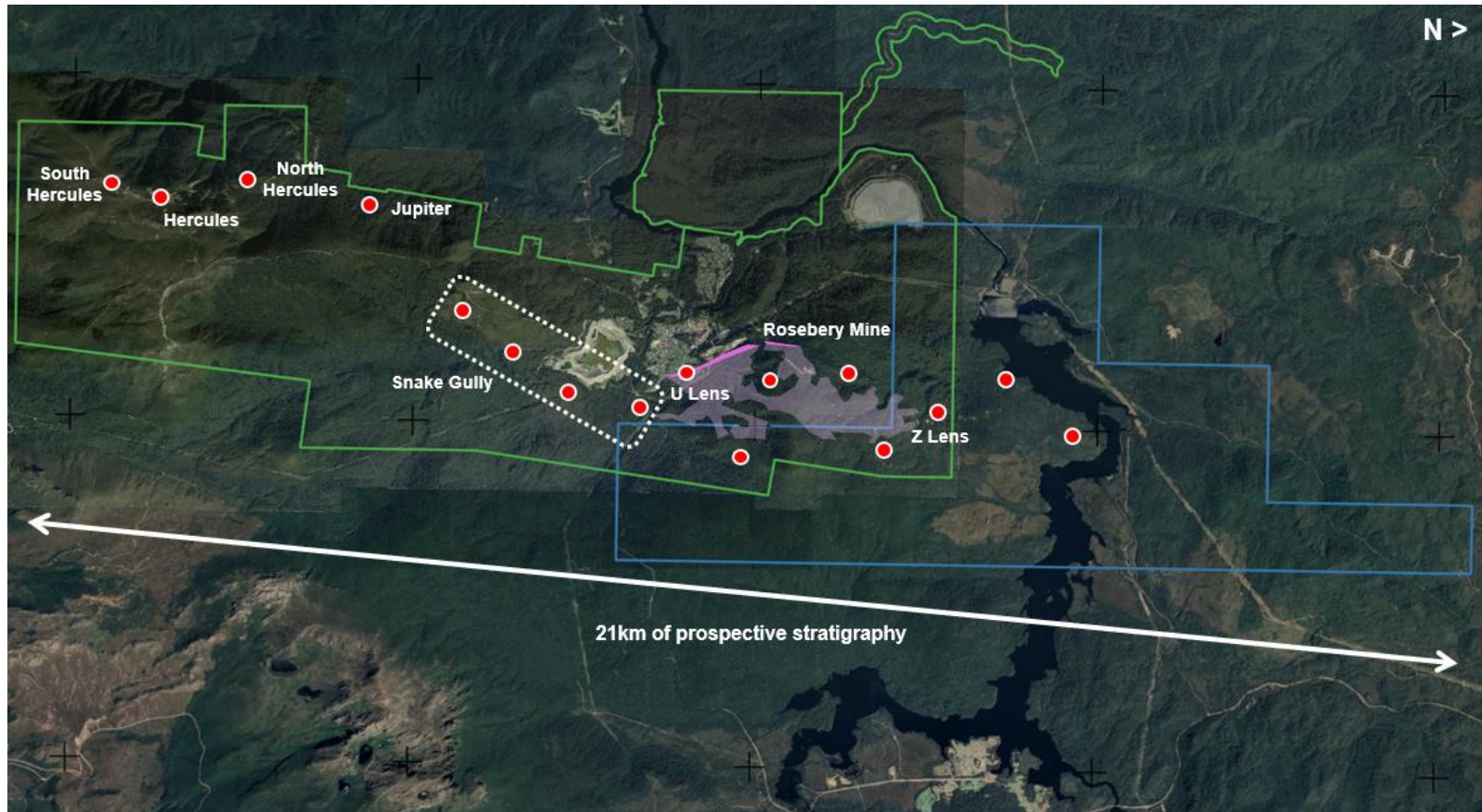
# Rosebery 2023 drilling program

- We are embarking on an accelerated drilling program over the next two years.
- In 2023, we are dedicating \$26M into the drilling program – that's 80% of what the entire Tasmanian industry invested in minerals exploration in the 21/22 FY (\$32M).
- We aim to increase the resource inventory for a new Tailings Storage Facility (TSF).
- We are using state-of-the-art technology to drill with 5 underground rigs and 3 surface rigs in operation.
- We have 120km of drilling to complete, and have expanded our Geology team to 12 employees to accommodate the program





# Rosebery 2023 drilling program



# Tailings and How They Are Stored Safely

**PAMELA SOTO**

*Manager Tailings & Water Australia*

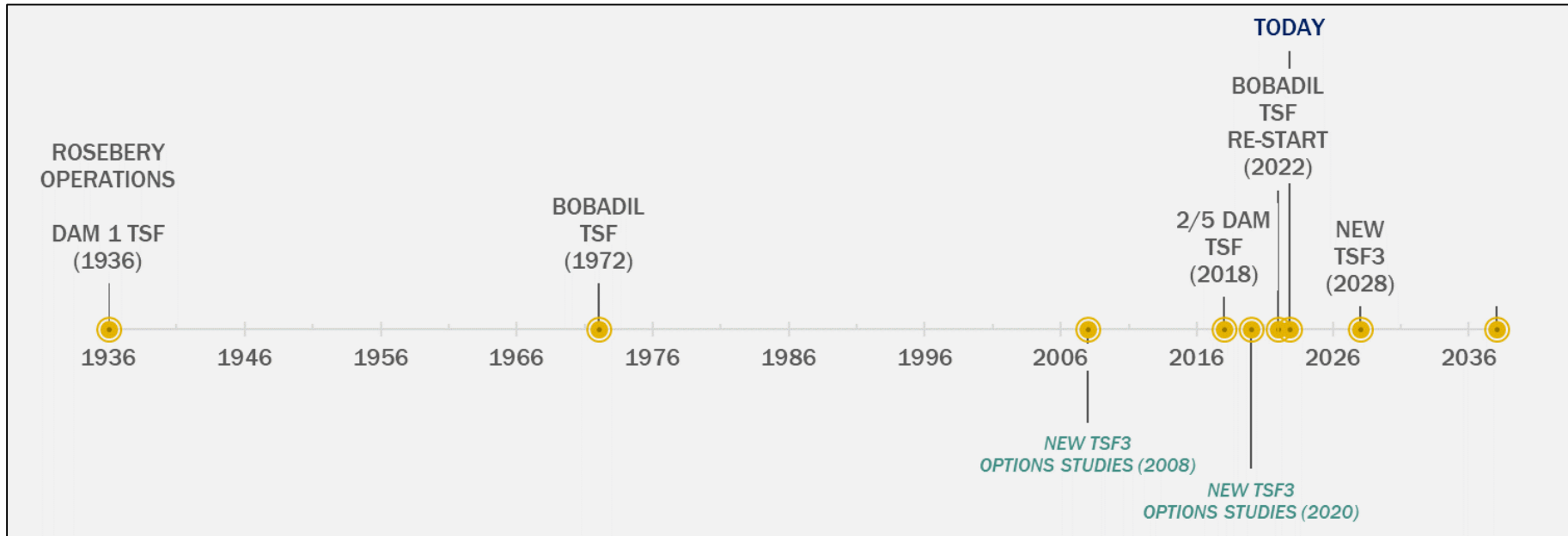
**STEPHEN NEWMAN**

*Head of Tailings & Water*



# What are tailings?

- When ore is brought to the surface from Rosebery's underground mine, it is put through a processing plant to remove as much of the valuable minerals as possible.
- The residue from this process is predominantly crushed rock and water, with small quantities of trace elements and processing reagents.

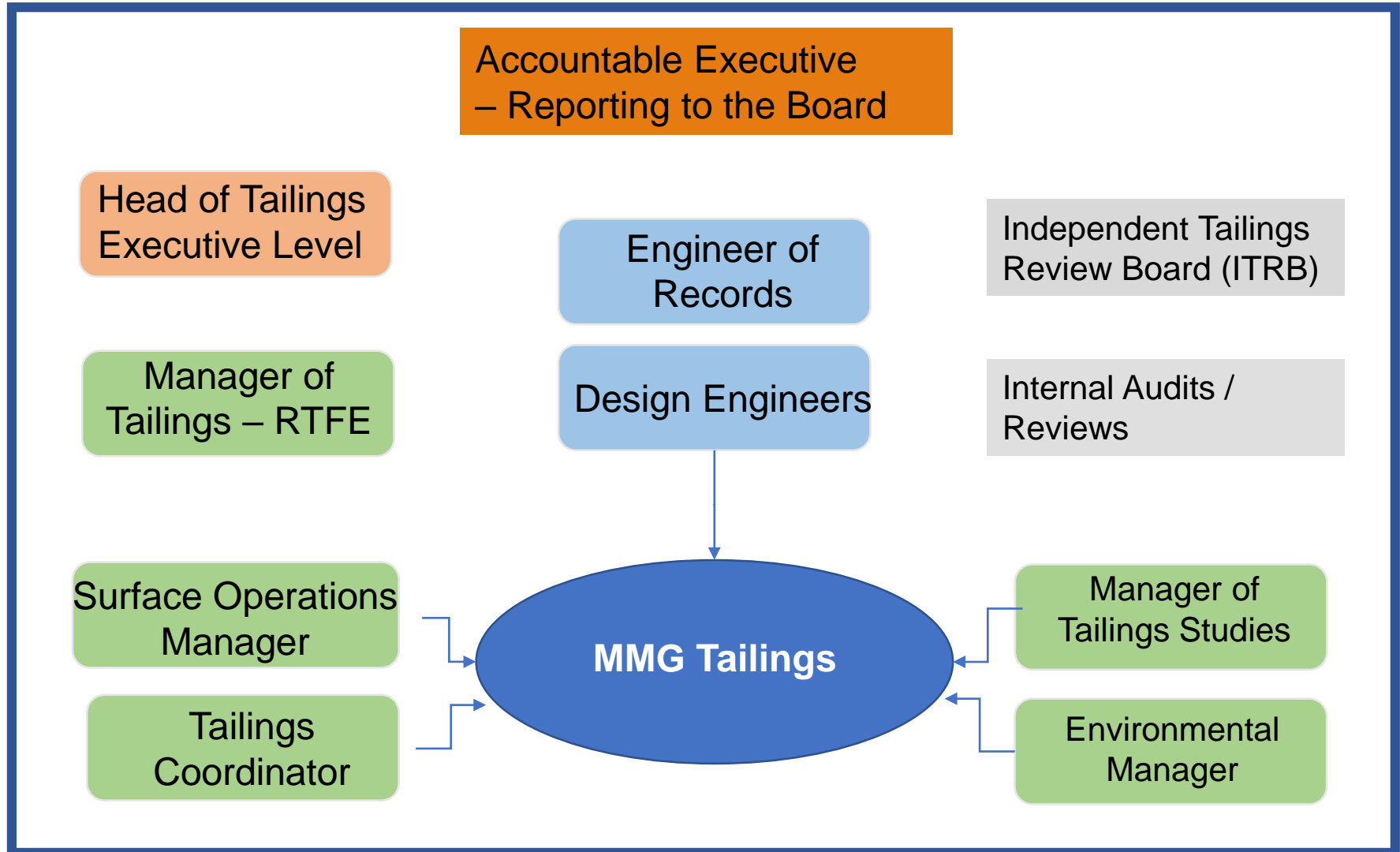




# Our Tailings Storage Facilities: Bobadil TSF & 2/5 Dam TSF



# Who oversees stored tailings safety?



# How Do We Make Sure Tailings are Stored Safely?



Global Industry Standard on  
Tailings Management (GISTM)



Australian National  
Committee on Large Dams



Global  
Disclosure



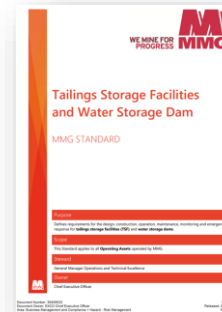
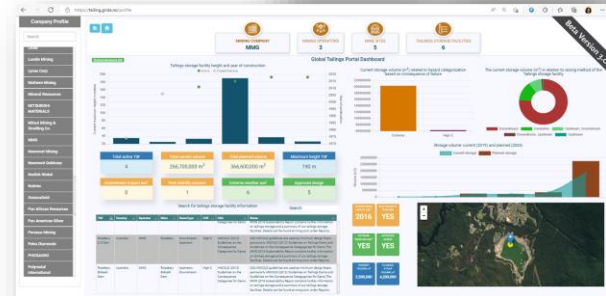
Tasmanian  
Government



Department of Primary Industries, Parks, Water and Environment

MMG  
Governance

Independent  
Reviews / Audits





# Existing Tailings Storage Update

## Project Assessment and Approvals

**ADAM PANDELIS**

*Manager Environment, Community & Closure*



## Bobadil

- Investigative studies are currently underway for Bobadil Stage 11.
- Commencement of construction is planned for last Qtr. 2023.
- Stage 11 would then have available storage to approx. Q4 2025.
- Investigative studies have commenced Bobadil stage 12.

## 2/5 Dam

- 2/5 stage is currently under construction target completion Mid – 2023.
- Investigative studies have commenced for 2/5 stage 3. Feasibility target completion Mid 2023.
- Commencement of Construction is planned for early 2025.

### Dust Management

Focus on identifying conditions for dust pick up before they occur and implementing management controls

Monitoring instruments include:

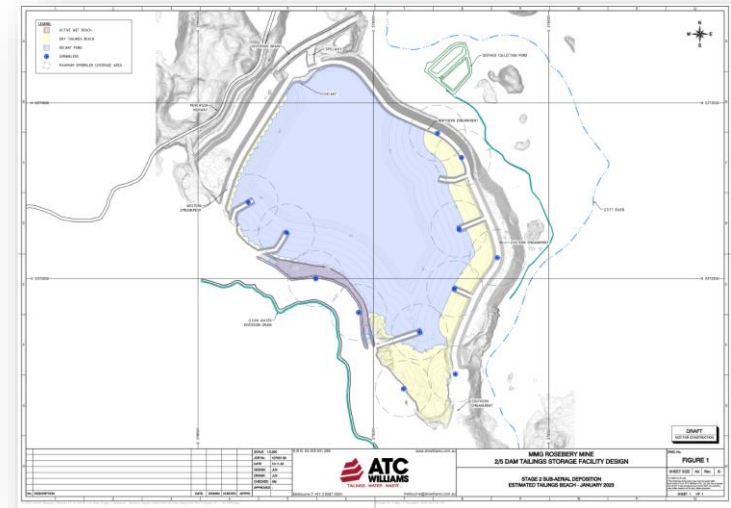
Weather station → 8 dust monitors situated around the TSF → soil moisture sensors

Management controls include:

System of sprinklers

Annual reviews of dust management performance

Trialing dust suppressant chemicals





## 2/5 Dam TSF



# New Tailings Storage (TSF3) Options

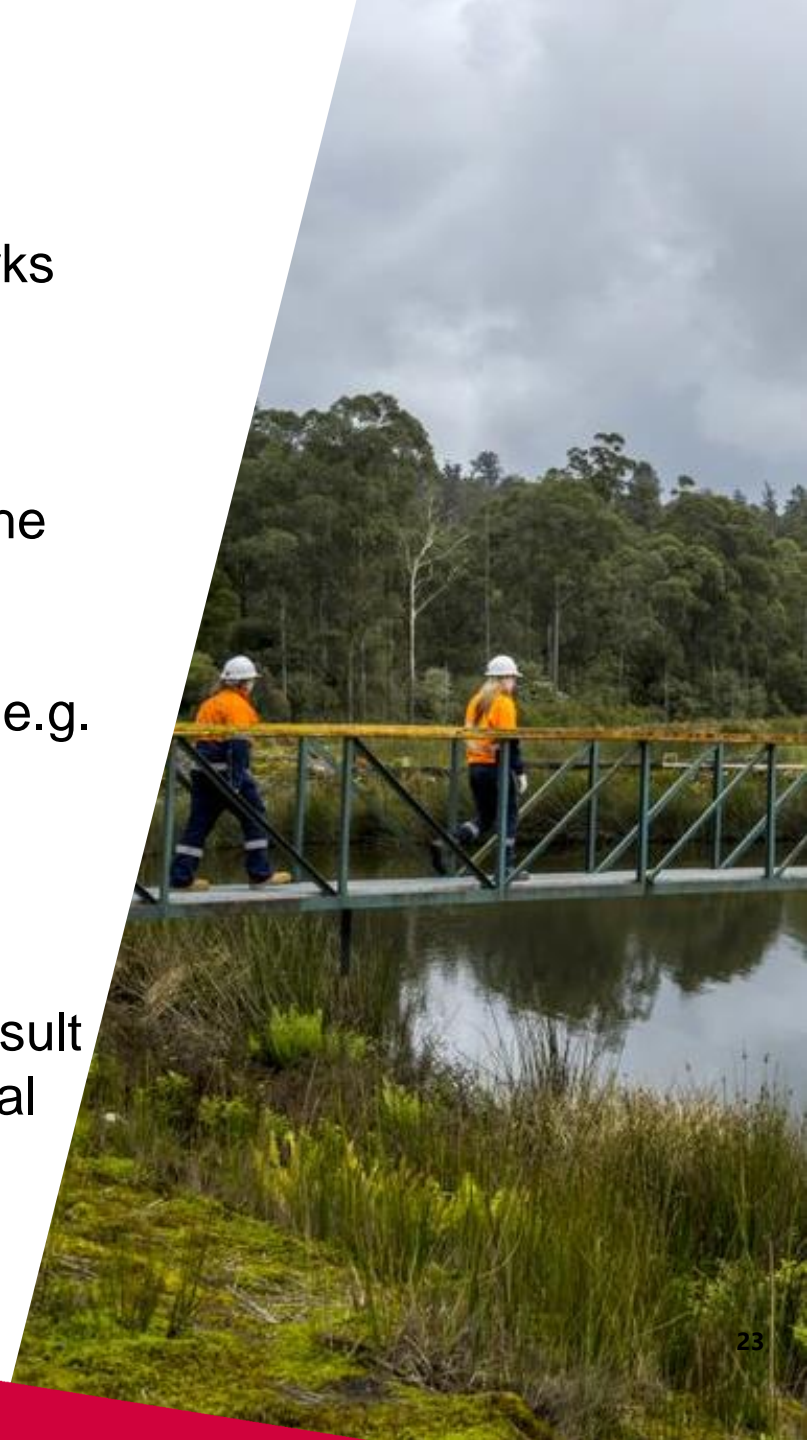
- Natone (TSF3) Creek Field Site Investigation work complete and results are being reviewed.
- South Marionoak (TSF3) Remains our preferred location. Site work on hold.
- Project studies have commenced to consider other site options for TSF3 and technologies such as filtered tailings, similar to dry stacking.

***All viable options are being investigated***

# Environmental Approval process

Environmental approvals for undertaking works on a mine site can be broadly broken into 4 groups:

1. Exploration or investigative works under the guidance of a Mining Lease.
2. Smaller developments (Level 1 Activities) e.g. minor construction projects.
3. Larger Developments (Level 2 activities).
4. Developments that have or are likely to result in a significant impact to matters of national environmental significance.





# Investigative Approvals process

## Undertake Baseline

- Flora and fauna assessments
- Cultural and Aboriginal Heritage Assessments

## Develop investigative Program

- Test pitting, geotechnical drilling and track construction
- Programs are developed to understand how you design and construct

## Submit to Mineral Resources Tasmania (MRT)

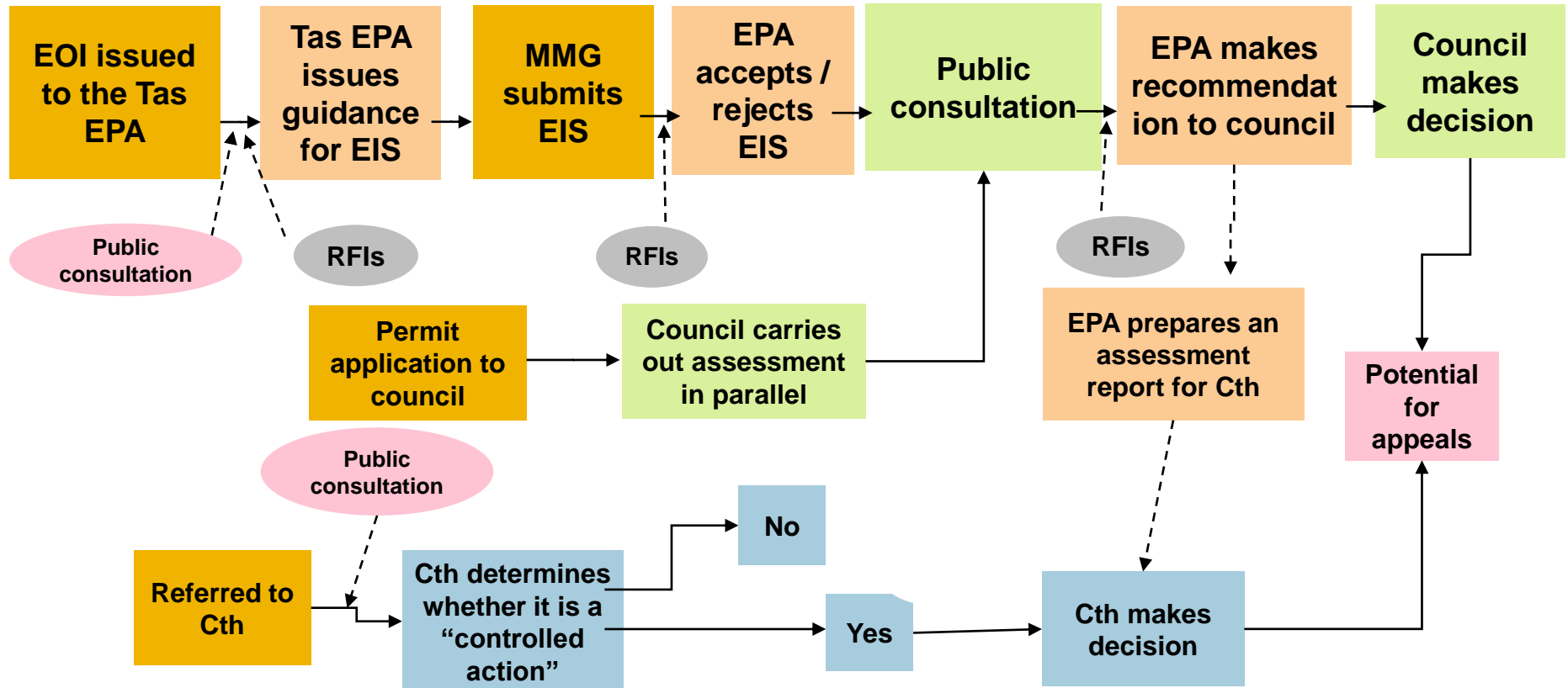
- Assessments can take 4- 8 weeks depending on complexity
- Depending on land tenure MRT can assess internally or send to a list of broad stakeholders for comment

## MRT detailed Assessment is undertaken

## Works program approval issued to proponent (with conditions)

- Approval is granted via a Works Program Approval (WPA).
- WPA stipulates particular conditions that should apply to the program that are additional to the Mineral Exploration Code of Practise

# Development Approvals process



# Planning for the future

**JON CROSBIE**

*Head of Climate and Closure  
Planning*



WE MINE FOR  
PROGRESS





# What is required?

- A mine Closure Plan is required for the Regulator.
- This Plan is adapted throughout the life of the mine to reflect changes from ongoing studies.
- This includes future planning for the mine, mill, support infrastructure, surrounding environment, and the assessment of social and community impacts.
- We collaborate with local community and other key stakeholders when undertaking closure planning and seek feedback over the future vision and options for Rosebery mine.
- Expect to see activity related to this planning over the coming months.

**Please do not be concerned. Closure planning does not mean the mine is about to shut its gates soon. Rather, we are responsibly planning for the future.**



## Closure

Regardless of the closure rehabilitation design, the objective is similar:

*“Safe, stable and non-polluting structure”*

If additional raises at 2/5 are approved, a ‘dry cover’ system will need to be utilised to close the facility.

The currently approved cover system is however a ‘wet cover’ of 2m water.

A trial for a dry cover system is currently underway at the Bobadil TSF.

***Want to understand more? We are happy to explain further – come discuss at question time.***



# QUESTIONS?

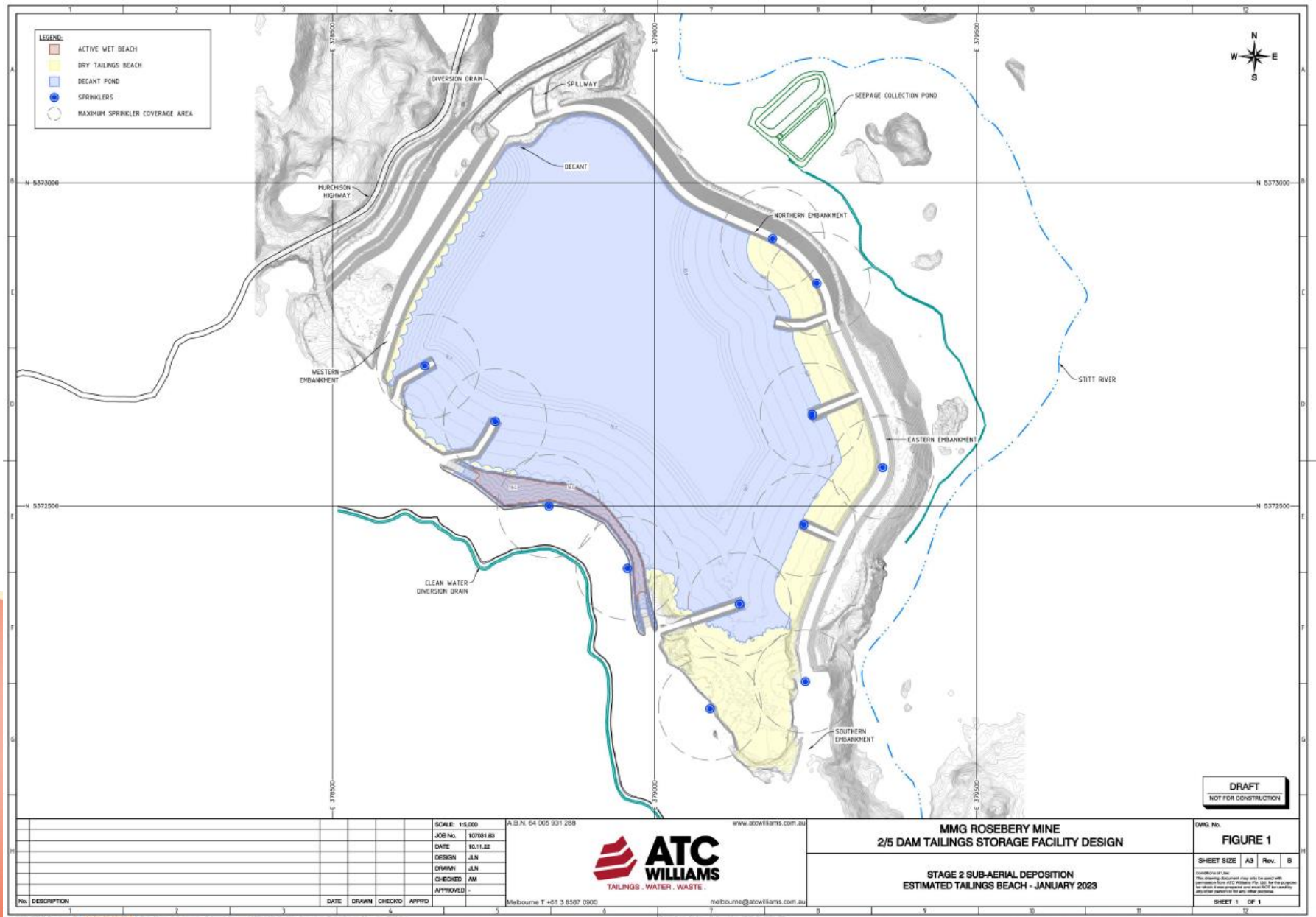


WE MINE FOR  
PROGRESS

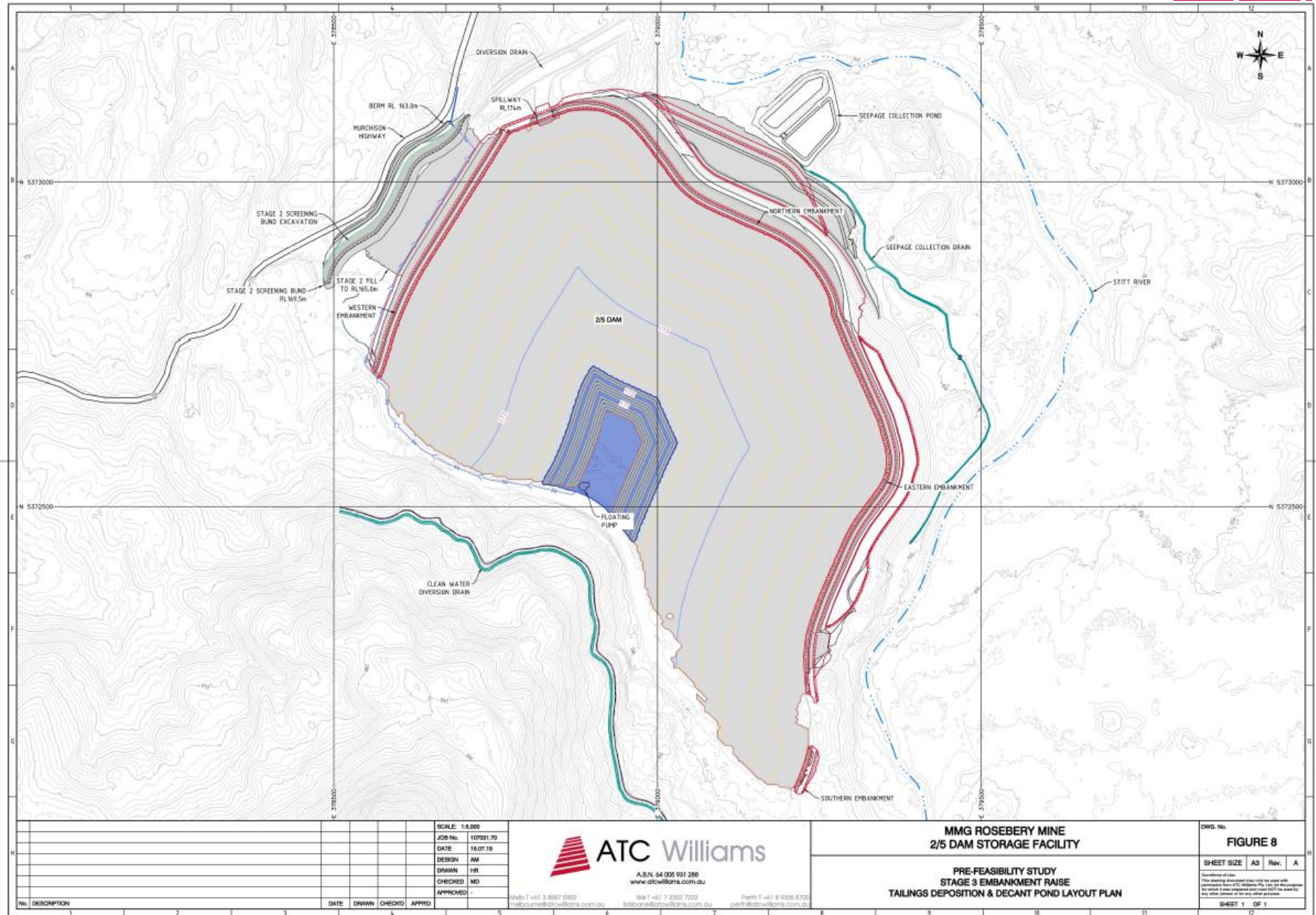




# Stage 2



# Stage 3 PFS design









2/5 TSF during redevelopment in 2017



























