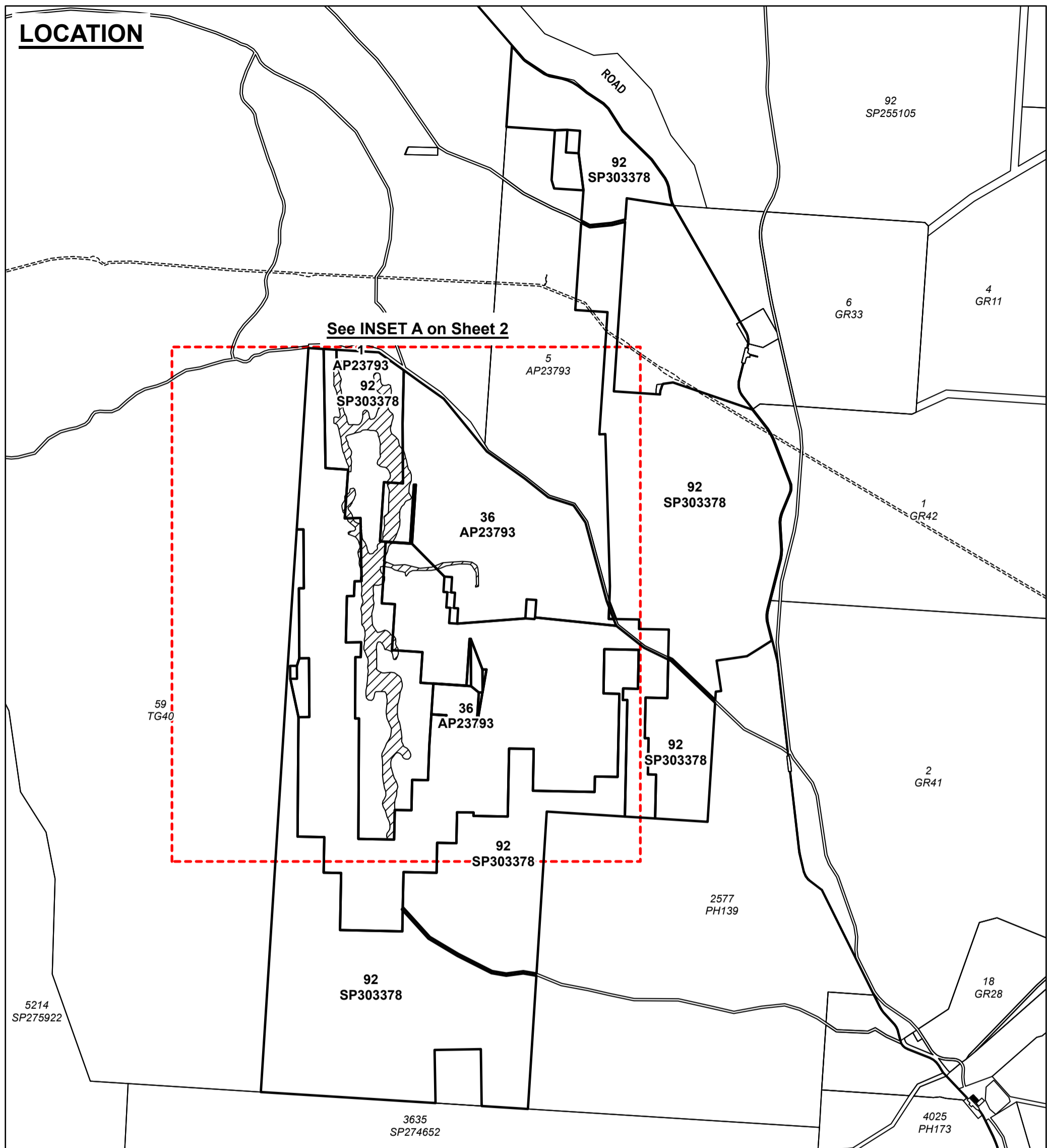
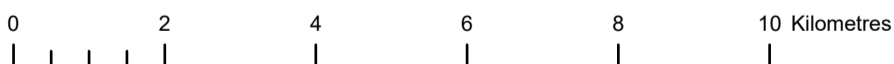


LOCATION



See INSET A on Sheet 2

SCALE 1:100,000 @ A3 paper size



Projection: GDA2020 MGA Zone 54

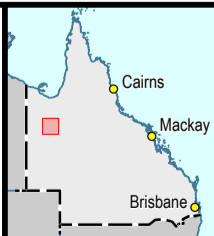
Datum: GDA2020

Notes: The property boundaries shown on this plan are APPROXIMATE ONLY. They are NOT an accurate representation of the legal boundaries.

This plan must be read in conjunction with Relevant Determination Letter 2025/000144

LEGEND

- Subject Lots
- Area A



Note: This is a colour map and must be reproduced in colour

Relevant Purpose Determination Plan

Plan of Area A (Part A1) in Lot 92 on Plan SP303378, Lot 36 on Plan AP23793 and Lot 1 on Plan AP23793



Queensland Government

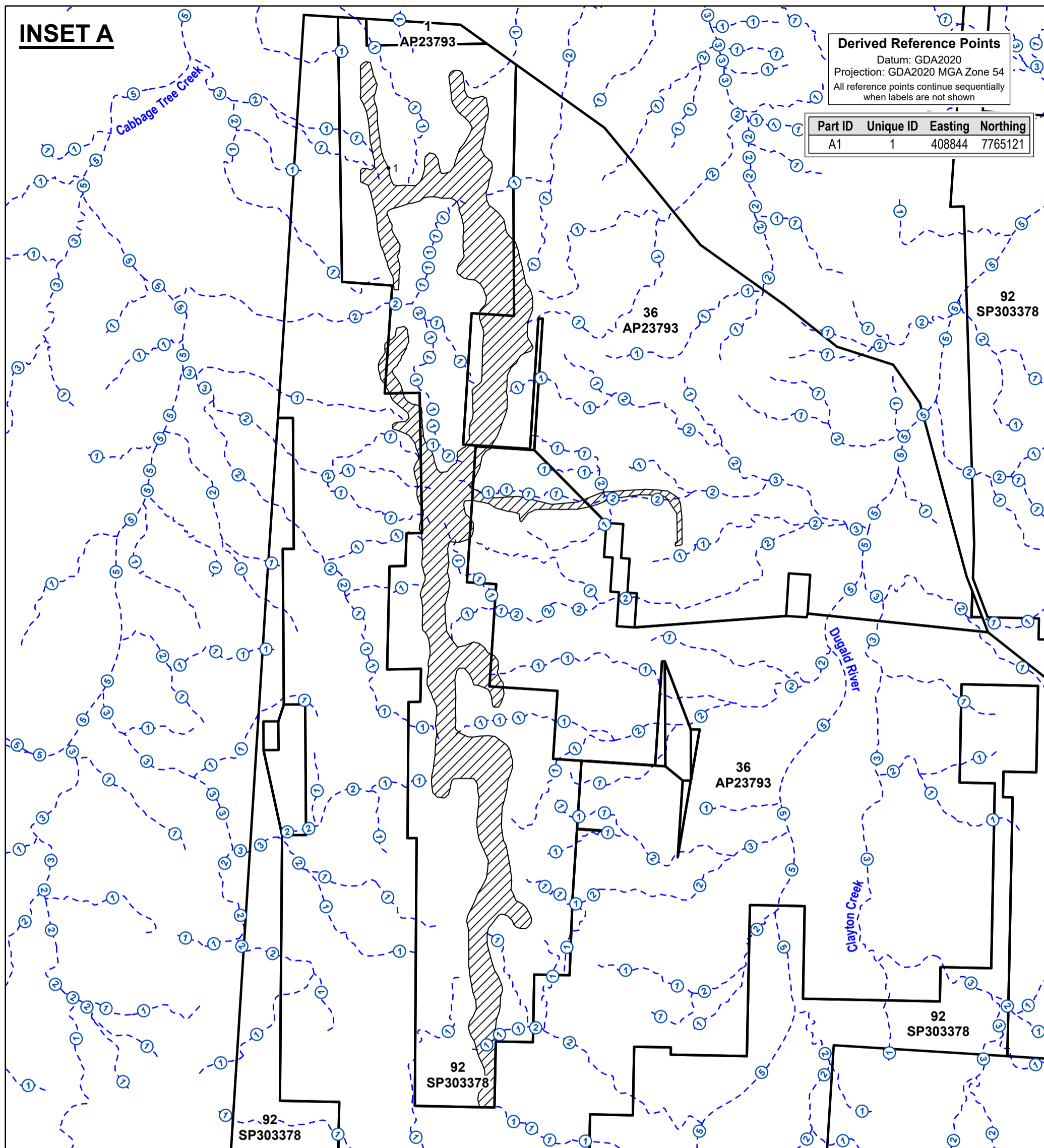
© The State of Queensland, 2025

**RPDP
2025/000144
Sheet 1 of 2**

Version: 1

eLVAS Case ID: 2025/000144

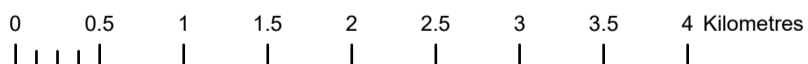
INSET A



Derived Reference Points
 Datum: GDA2020
 Projection: GDA2020 MGA Zone 54
 All reference points continue sequentially when labels are not shown

Part ID	Unique ID	Easting	Northing
A1	1	408844	7765121

SCALE 1:45,000 @ A3 paper size



Projection: GDA2020 MGA Zone 54

Datum: GDA2020

Notes: Derived Reference Points are provided to assist in the location of area boundaries. Responsibility for locating these boundaries lies solely with the landholder.

Watercourse and drainage feature locations shown on the Vegetation Management Plan are derived from the certified Vegetation Management Watercourse and Drainage Feature Map. These alignments are approximate only and require ground truthing to identify the exact location of the watercourse or drainage feature.

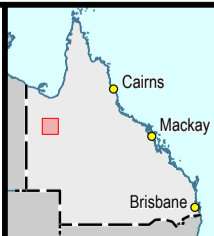
The property boundaries shown on this plan are APPROXIMATE ONLY. They are NOT an accurate representation of the legal boundaries.

This plan must be read in conjunction with Relevant Determination Letter 2025/000144

LEGEND

- 1 Derived Reference Points
- ▭ Subject Lots
- ▨ Area A
- ① Watercourse and/or drainage feature (Stream order label)

Note: This is a colour map and must be reproduced in colour



Relevant Purpose Determination Plan

Plan of Area A (Part A1) in Lot 92 on Plan SP303378, Lot 36 on Plan AP23793 and Lot 1 on Plan AP23793

Version: 1

eLVAS Case ID: 2025/000144



© The State of Queensland, 2025

**RPDP
 2025/000144
 Sheet 2 of 2**