



Dugald River Wind Farm Project

Social Impact Assessment

PREPARED FOR



MMG Dugald River Pty Ltd

DATE

16 July 2025

REFERENCE

0755929



DOCUMENT DETAILS

DOCUMENT TITLE	Dugald River Wind Farm Project
DOCUMENT SUBTITLE	Social Impact Assessment
PROJECT NUMBER	0755929
DATE	16 July 2025
VERSION	Final
AUTHOR	Environmental Resources Management Australia Pty Ltd
CLIENT NAME	MMG Dugald River Pty Ltd

DOCUMENT HISTORY

VERSION	REVISION	AUTHOR	REVIEWED BY	ERM APPROVAL TO ISSUE		COMMENTS
				NAME	DATE	
Draft	1	Louise Waite	Louis Penny	Charissa Tomlin	20.06.2025	Draft to Client
Final	2	Louise Waite	Louis Penny, Josh Maunder	Charissa Tomlin	01.07.2025	Second Draft for Client Review
Final	3	Louise Waite	Louis Penny, Josh Maunder	Charissa Tomlin	16.07.2025	Final for Client Issue

Dugald River Wind Farm Project

Social Impact Assessment

0745548



Louis Penny

Principal Consultant – Social Performance



Josh Maunder

Project Manager



Charissa Tomlin

Partner

Environmental Resources Management

Australia Pty Limited

Level 14, 207 Kent Street

Sydney NSW 2000

T +61 2 8584 8888

© Copyright 2025 by The ERM International Group Limited and/or its affiliates ("ERM"). All Rights Reserved.

No part of this work may be reproduced or transmitted in any form or by any means, without prior written permission of ERM.

CONTENTS

1.	INTRODUCTION	1
1.1	PROJECT PROPONENT	1
1.2	PURPOSE AND OBJECTIVE	1
1.3	SCOPE OF THE ASSESSMENT	2
1.4	STRUCTURE OF THE REPORT	2
1.5	AUTHORSHIP	3
1.6	LIMITATIONS	3
2.	PROJECT DESCRIPTION	4
2.1	PROJECT OVERVIEW	4
2.2	CONSTRUCTION METHODOLOGY	5
2.2.1	Equipment and Machinery	5
2.2.2	Water Supply	6
3.	METHODOLOGY	9
3.1	TASK #1: SCOPING	9
3.2	TASK #2: BASELINE ANALYSIS	10
3.3	TASK #3: IMPACT ASSESSMENT	11
3.4	TASK #4: MANAGEMENT MEASURES	13
3.5	TASK #5: MONITORING FRAMEWORK	14
4.	SCOPING	15
4.1	APPROACH TO DETERMINING THE SOCIAL STUDY AREA	15
4.2	DESCRIPTION OF THE SOCIAL STUDY AREA	16
4.2.1	ABS Datasets	17
4.3	STAKEHOLDER IDENTIFICATION	19
4.4	POLICY AND REGULATORY CONTEXT	21
4.4.1	Planning Act 2016	21
4.4.2	Queensland SIA Guideline	21
4.4.3	North West Queensland Regional Plan 2010	22
4.4.4	Cloncurry Shire Planning Scheme 2016	23
4.5	SURROUNDING PROJECTS	24
5.	SOCIAL BASELINE	26
5.1	LAND USE CONTEXT	26
5.2	DEMOGRAPHIC PROFILE	26
5.3	ECONOMIC PROFILE	27
5.3.1	Income	29
5.3.2	Business Health	29
5.4	HOUSING AND ACCOMMODATION	30
5.5	SOCIAL INFRASTRUCTURE	32
5.5.1	Social Services	32
5.5.2	Health and Emergency Services	32
5.5.3	Education	33
5.6	TRAVEL AND ACCESS	34
5.6.1	Access	34

5.6.2	Aerodromes	34
5.6.3	Vehicle Ownership	35
5.6.4	Method of Travel to Work	35
5.7	COMMUNITY CHARACTERISTICS	37
5.8	VULNERABLE GROUPS	38
5.8.1	Socio-Economic Disadvantage	38
5.8.2	Cultural and Linguistical Diversity	39
5.8.3	Youth and Elderly	40
5.8.4	Indigenous Peoples	41
6.	COMMUNITY AND STAKEHOLDER ENGAGEMENT	43
6.1	STAKEHOLDER ENGAGEMENT APPROACH	43
6.2	SUMMARY OF STAKEHOLDER ENGAGEMENT ACTIVITIES RELEVANT TO THE PROJECT	43
6.2.1	State/Federal Government	43
6.2.2	Host Leaseholder / Immediate Neighbours	44
6.2.3	Local Government	44
6.2.4	Aboriginal Groups	45
6.2.5	Broader Community	45
6.3	OTHER RELEVANT STAKEHOLDER ENGAGEMENT	45
6.3.1	MMG Dugald River Perception Survey	45
7.	IMPACT ASSESSMENT	46
7.1	EXISTING COMMUNITY PROGRAMS AND INVESTMENT	46
7.1.1	Host Leaseholder / Immediate Neighbours	47
7.1.2	Local Government	47
7.1.3	Aboriginal Groups	47
7.1.4	Broader Community	48
7.2	KEY IMPACTS AND MANAGEMENT MEASURES	48
8.	MONITORING AND MANAGEMENT FRAMEWORK	61
9.	CONCLUSION	64
10.	REFERENCES	66

APPENDIX A INDIGENOUS LAND USE AGREEMENT

LIST OF TABLES

TABLE 2-1	CANDIDATE WTG MODEL SPECIFICATIONS	4
TABLE 3-1	LIKELIHOOD LEVELS	12
TABLE 3-2	MAGNITUDE CHARACTERISTICS	12
TABLE 3-3	MAGNITUDE LEVELS	12
TABLE 3-4	IMPACT SIGNIFICANCE MATRIX	13
TABLE 4-1	SUMMARY OF RELEVANT ABS DATASETS	17
TABLE 4-2	KEY STAKEHOLDERS	19
TABLE 4-3	PROJECT COMPLIANCE WITH THE REGIONAL PLAN	22
TABLE 4-4	APPLICABLE STRATEGIC OUTCOMES	23
TABLE 5-1	KEY DEMOGRAPHIC INDICATORS	26
TABLE 5-2	LABOUR FORCE STATUS	27
TABLE 5-3	KEY RELEVANT OCCUPATIONS	28
TABLE 5-4	KEY RELEVANT INDUSTRIES	28
TABLE 5-5	INCOME INDICATORS	29
TABLE 5-6	BUSINESS HEALTH INDICATORS	29
TABLE 5-7	KEY HOUSING INDICATORS	31
TABLE 5-8	HEALTH AND EMERGENCY SERVICES	32
TABLE 5-9	EDUCATIONAL FACILITIES	33
TABLE 5-10	NUMBER OF MOTOR VEHICLES PER PRIVATE DWELLING	35
TABLE 5-11	METHOD OF TRAVEL TO WORK	36
TABLE 5-12	SIGNIFICANT FESTIVALS AND EVENTS IN CLONCURRY AND MOUNT ISA	37
TABLE 5-13	SEIFA INDICATORS ACROSS THE SOCIAL STUDY AREA	39
TABLE 5-14	COUNTRY OF BIRTH AND LANGUAGE	40
TABLE 5-15	ESTIMATED RESIDENT POPULATION BY AGE	41
TABLE 5-16	ABORIGINAL AND TORRES STRAIT ISLANDER POPULATION	42
TABLE 7-1	SOCIAL IMPACTS AND MANAGEMENT MEASURES	49
TABLE 8-1	PROPOSED MONITORING FRAMEWORK	62

LIST OF FIGURES

FIGURE 2-1	PROJECT REGIONAL CONTEXT	7
FIGURE 2-2	PROJECT LAYOUT	8
FIGURE 3-1	SIA PROCESS	9
FIGURE 3-2	IMPACT ASSESSMENT PROCESS	11
FIGURE 4-1	SOCIAL STUDY AREA	18

ACRONYMS AND ABBREVIATIONS

Acronym	Description
ABS	Australian Bureau of Statistics
ARBN	Australian Registered Body Number
ATP	Authority to Prospect
B RTP	Bachelor of Regional and Town Planning
CALD	Cultural and Linguistic Diversity
CBA	Community Benefit Agreement
DIDO	Drive-In/Drive-Out
DRM	Dugald River Mine
DSDIP	Department of State Development, Infrastructure and Planning
DTMR	Department of Transport and Main Roads
EIS	Environmental Impact Statement
EPG	Exploration Permit Geothermal
EPM	Exploration Permit Minerals
ERM	Environmental Resources Management Australia Pty Limited
ERP	Estimate Resident Population
FIFO	Fly-in/Fly-out
FTE	Full-time-equivalent
Ha	Hectares
IAP2	International Association for Public Participation Australasia
ICMM	International Council on Mining and Metals
ILUA	Indigenous Land Use Agreement
IRSAD	Index of Relative Socio-economic Advantage and Disadvantage
km	Kilometres
KNTAC	Kalkadoon Native Title Aboriginal Corporation
Landowner	State of Queensland
Leaseholder	McMillan Family
LEMP	Local Employment Management Plan
LGA	Local Government Area
LVIA	Landscape and Visual Impact Assessment
MDL	Mineral Development Licence
Met Mast	Meteorological Mast
MITEZ	Mount Isa to Townsville Economic Zone

Acronym	Description
ML	Mining Lease
MMG	MMG Dugald River Pty Ltd
MW	Megawatts
NAIDOC	National Aboriginal and Islanders Day Observance Committee
NHRA	Natural Hazard and Risk Assessment
NIA	Noise Impact Assessment
NWMP	North West Minerals Province (Resource Region)
P-CEMP	Preliminary Construction Environmental Management Plan
PIA	Planning Institute of Australia
Planning Act	<i>Planning Act 2016</i>
Planning Scheme	Cloncurry Shire Council Planning Scheme 2016
Project	Dugald River Wind Farm
Regional Plan	North West Regional Plan 2010
SA2	Statistical Area 2
SDAP	State Development Assessment Provisions
SDG	Sustainable Development Goal
SEIFA	Socio-Economic Index for Areas
SIA	Social Impact Assessment
SIA Guideline	(Draft) Social Impact Assessment Guideline Version 2
SIMP	Social Impact Management Plan
SMP	Stakeholder Management Plan
STEM	Science, Technology, Engineering and Mathematics
WTG	Wind Turbine Generator

1. INTRODUCTION

Environmental Resources Management Australia Pty Limited (ERM) has been appointed by MMG Dugald River Pty Ltd (MMG) to undertake a streamlined Social Impact Assessment (SIA) for the proposed Dugald River Wind Farm Project (the Project), located approximately 63 km north-west of the township of Cloncurry.

This SIA identifies, predicts, evaluates and develops responses to the potential social impacts of the Project. A key outcome of the SIA is the development of management measures to enhance positive impacts and mitigate negative impacts, along with ongoing monitoring and reporting requirements.

In accordance with the Queensland planning framework, it is intended that this SIA provide the necessary information to support the development and execution of a Community Benefit Agreement (CBA) and enable the making of a “properly made” Development Application.

1.1 PROJECT PROPONENT

The proponent for the Project is MMG Dugald River Pty Ltd (MMG), which is a wholly owned subsidiary of MMG Limited (Company No. 222797; ARBN 31 150 889 151; HKEX: 1208). MMG Limited is a global resources company that mines, explores and develops base metal projects that achieve a low carbon future. MMG Limited has a progressive global commitment to decarbonising its mining operations through a reduction of Scope 1 and 2 emissions by 40% from a 2020 baseline by 2030, whilst simultaneously working towards net-zero by 2050.

In 2017, MMG commenced its operations at the Dugald River Mine (DRM), a top 10 global zinc deposit. The DRM has a planned Life of Mine for 20+ years, with an average production of 1.7 million tonnes of ore per annum. The operation predominately produces zinc concentrate, with by-products including lead and silver.

In 2021, MMG signed as the foundation customer for power sourced from the 88MW Mount Isa Solar Farm. The MMG allocation is sufficient to power 100% of the DRM during daylight hours and has resulted in approximately 33% reduction in DRM power CO₂ emissions.

1.2 PURPOSE AND OBJECTIVE

The SIA has been prepared to support MMG’s ‘Social Licence to Operate’ and is guided by the requirements of the Queensland planning framework, in particular, the (Draft) Social Impact Assessment Guideline Version 2, dated May 2025 (‘SIA Guideline’) (DSDIP, 2025).

To this end, the SIA will assess and report on the risks, potential positive benefits, and negative impacts to surrounding communities, stakeholders, and sensitive receptors relevant to the Project, and provide the necessary information to support the development and execution of a CBA.

Specifically, this SIA will:

- Establish a baseline of the key aspects necessary to assess relevant Project impacts;
- Assess the known and potential impacts of the Project (positive and negative) on the communities surrounding the Social Study Area; and
- Identify relevant and effective impact avoidance, mitigation and management options, and explore benefit enhancement measures.

The statutory framework relevant to the SIA is provided in **Section 4.4**.

1.3 SCOPE OF THE ASSESSMENT

The SIA focuses assessing the Project against the key matters nominated the SIA Guideline (DSDIP, 2025), being:

- Community and stakeholder engagement;
- Workforce management;
- Housing and accommodation;
- Local business and industry procurement; and
- Health and community well-being.

The SIA is prepared in accordance with the SIA principles:

- **Lifecycle-focused** – the full lifecycle of the Project is to be considered;
- **Reasonable** – the nature and scale of the Project are to be considered, along with the sensitivities of the local environment, and the scope and significance of social impacts;
- **Participatory** – the assessment is to be inclusive, respectful, meaningful to impacted individuals and groups, with mitigation and management outcomes appropriately tailored to the needs of stakeholders;
- **Rigorous** – the assessment is to be objective and comprehensive, using the most appropriate and up-to-date datasets;
- **Effective Management** – the mitigation and management measures are to be effective and enhance potential benefits and mitigate potential negative impacts; and
- **Adaptive** – the mitigation and management measures identified are to be monitored, reviewed and adjusted to ensure ongoing effectiveness.

Further details on the methodology are provided in **Section 3**.

1.4 STRUCTURE OF THE REPORT

This SIA is structured as follows:

- **Section 1:** Introduction
- **Section 2:** Project Description
- **Section 3:** Methodology
- **Section 4:** Scoping
- **Section 5:** Social Baseline
- **Section 6:** Community and Stakeholder Engagement
- **Section 7:** Impact Assessment
- **Section 8:** Monitoring and Management Framework
- **Section 9:** Conclusion
- **Section 10:** References.

1.5 AUTHORSHIP

The SIA Report was overseen and reviewed by Louis Penny, Principal Consultant at ERM.

Louis has over 15 years' experience in Social Performance, inclusive of preparing numerous SIAs, socio-economic baselines, Social Impact Management Plans (SIMPs), Human Rights Impact Assessments, and development of 'Creating Shared Value' / Benefit Sharing Initiatives. Louis holds a Bachelor of Regional and Town Planning (BRTP) from the University of Queensland and is a full member of the Planning Institute of Australia (PIA).

The SIA Report was completed in good faith in accordance with the relevant ethical frameworks, and to the knowledge of both authors does not contain any false or misleading information.

1.6 LIMITATIONS

The SIA was undertaken based on the project description presented in **Section 2**, provided by MMG. Changes to the Project Description may warrant changes to predicted social impacts, including their significance. If this occurs, the proposed management measures should be reviewed and amended to suit the new conditions.

ERM relied on the information provided by MMG for the purpose of the social baseline (i.e. Dugald River Socio-Economic Baseline Study and Dugald River Social Impact and Opportunities Assessment, prepared by Bina Sustainable Solutions Pty Ltd) and the outcomes of community and stakeholder engagement. Community and stakeholder engagement was conducted by MMG between February 2024 and April 2025, with the outcomes captured in the Stakeholder Engagement Report for the Project.

2. PROJECT DESCRIPTION

The Project is located in the Knapdale Range, approximately 63 km north-west of the Township of Cloncurry and 84 km north-east of the city of Mount Isa, within the Cloncurry Shire Council Local Government Area (LGA). Mining infrastructure associated with the DRM, including the Tailings Storage Facility, pipeline infrastructure and exploration pads, are located to the east of the Project. The regional context of the Project is depicted in **Figure 2-1**.

The Project is located within a defined Micrositing Corridor of approximately 631.2 ha, which allows for micrositing of Project infrastructure through the detailed design stage. The disturbance footprint of the Project is not to exceed approximately 137.2 ha within the Micrositing Corridor. The entire Micrositing Corridor is located within the Rural Zone of the Cloncurry Shire Council, with the predominant land use being low-intensity cattle grazing and mining.

The Project is located on State Land, formally described as Lot 92 on SP303378, Lot 1 on AP23793, and Lot 36 on AP23793. MMG has established landholder land tenure to develop the Project and has a registered Indigenous Land Use Agreement (ILUA) with the Kalkadoon People with the for the Project. The proposed Project layout is shown in **Figure 2-2**.

2.1 PROJECT OVERVIEW

The Project includes the construction, operation, and maintenance of Wind Turbine Generators (WTGs) and associated infrastructure, with an anticipated generation capacity of up to 144 megawatts (MW).

Key infrastructure is to include:

- Up to 24, 6 MW WTGs;
- Up to two (2) permanent Met Masts;
- Access tracks;
- Hardstand areas;
- Supporting infrastructure (including a collection substation and underground and overhead powerlines);
- Material laydown areas;
- Construction laydown areas; and
- An operations and maintenance facility.

The Project will use the Goldwind GW165-6.0 MW as the WTG candidate model. Features associated with the candidate WTG model are provided in **Table 2-1**.

TABLE 2-1 CANDIDATE WTG MODEL SPECIFICATIONS

Feature	Statistic
Hub height	Up to 130 m
Rotor diameter*	Up to 165 m
Tip height	Up to 300 m above ground level

**The maximum specifications listed in the table provided represent a "worst case scenario for impact assessment" and provides flexibility for any innovation in turbine design between now and the time of detailed design and construction.*

The Project is anticipated to have a two-year construction timeframe, and at its peak, is expected to create 100 full-time-equivalent (FTE) jobs. During operation, maintenance crews will vary in size, ranging from small teams of three to five people for regular maintenance and between 15-20 during major refurbishments and uplift.

Owing to the location, the Project benefits from existing DRM infrastructure and services, particularly the DRM Accommodation Camp. MMG anticipates that the construction and operational workforce will be housed within the DRM Accommodation Camp.

2.2 CONSTRUCTION METHODOLOGY

While the contractors engaged by MMG will be responsible for the detailed construction methodology for the Project, it is anticipated that construction work (subject to detailed design and geotechnical conditions) will likely include the following:

- Removal of vegetation;
- Earthworks and excavation;
- Equipment and material haulage (including haulage from Port of Townsville);
- Crushing and/or screening of materials;
- Construction of roads and hardstand areas;
- Concrete batching, formwork and pouring;
- Assembly of WTG components;
- Erection of WTG components;
- Installation of sediment control measures and environmental controls; and
- Construction of auxiliary infrastructure and powerlines.

2.2.1 EQUIPMENT AND MACHINERY

In order to support construction, it is anticipated that the following equipment will be used, however other machinery may be required dependent upon nominated construction techniques:

- **Site mobilisation** – road loaders, graders, backhoes, trucks, small crane, and generators;
- **Access tracks and hardstands** – road loaders, bulldozers, excavators, graders, scrapers, rollers, articulated dump trucks, belly dumper trucks, rock crushing plant, semi-trailers, tractors water carts and hydroseed trucks;
- **Wind Turbine Generators** – excavators, rock breaker, concrete trucks, flat-bed trucks, vacuum trucks, large crawler/all-terrain heavy lift cranes, small/medium crawler cranes, generators, tele-handlers and elevated work platforms;
- **Electrical reticulation works** – trenchers, backhoes, excavators, graders, tractors, cable laying machines, and small terrain cranes;
- **Concrete batching plants** – concrete mixing plant, batching equipment, conveyors, stackers, storage bins and silos;
- **Site services** – Option for vans or buses to transport staff around site and water delivery and effluent removal trucks (if required); and
- **Transmission line and towers** – earthmoving equipment, elevated work platforms, concrete trucks, borers, cranes, and other heavy machinery.

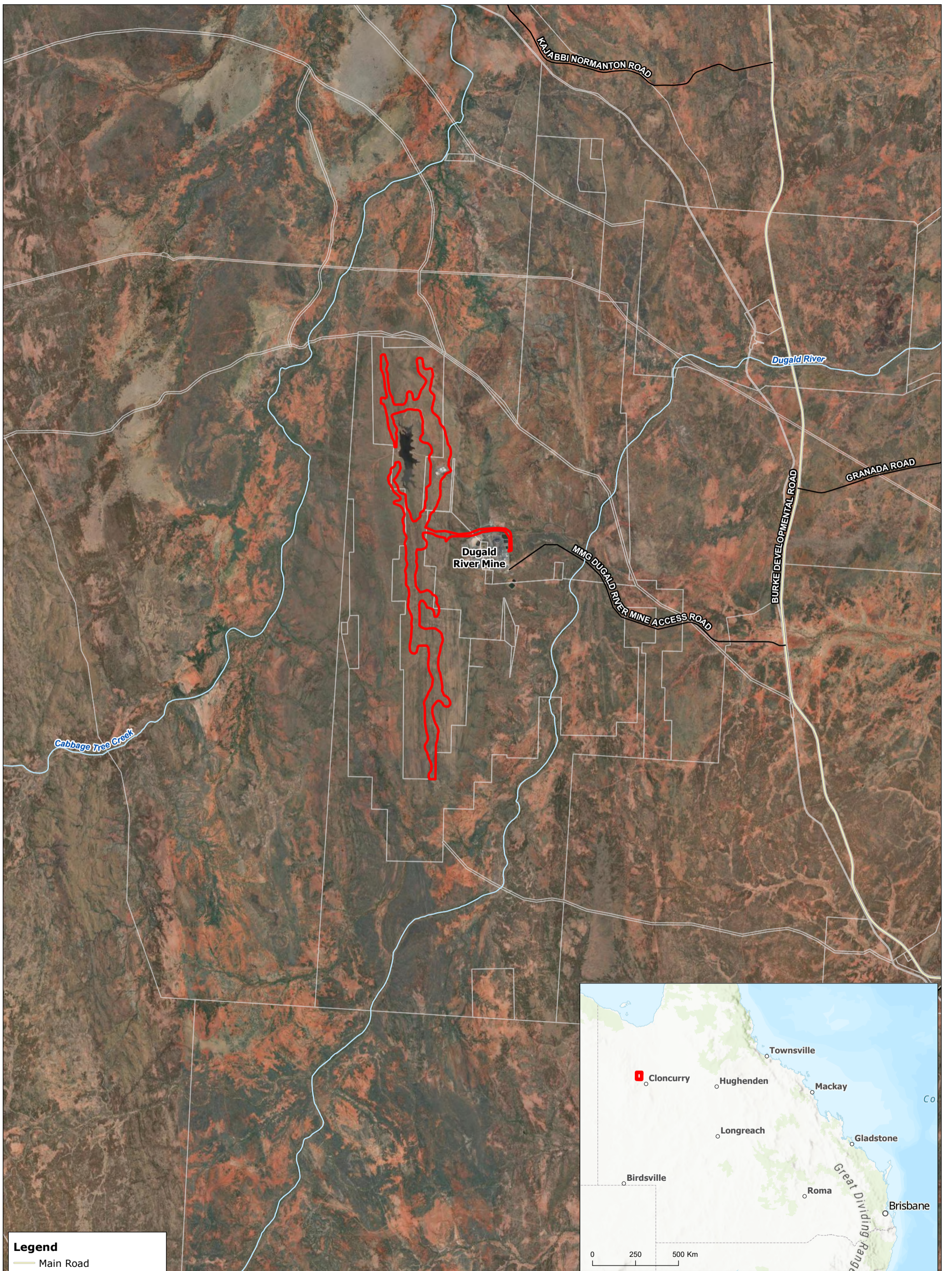
2.2.2 WATER SUPPLY

With respect to the water required for the Project, it is anticipated that the construction activities likely to require water are:

- Bulk earthworks and material conditioning;
- Dust suppression;
- Concrete pours; and
- Water for ablution facilities.

Water demand will vary over time, depending on the stages of the work. The total expected water requirement will be further refined during the detailed design process. The Proponent has committed to developing a water sourcing strategy to avoid impacting on adjacent landowners or other stakeholders/receptors (refer to **Section 4.3**).

Potable water fit for human consumption will be required at the site offices, while both medium (suitable for use in the concrete batching) and low-quality raw water (for earthworks and dust suppression) are to be used for construction purposes. Potable water will be sourced from the existing Sunwater pipeline which services the DRM. Existing catchment dams around the DRM may be used for the provision of lower quality water where testing confirms suitability.



Legend

- Main Road
- Local Road
- Major Watercourse
- Cadastre (Lot)
- Micrositing Corridor

Source:
Base Data - QSpatial
Imagery - ESRI World Imagery

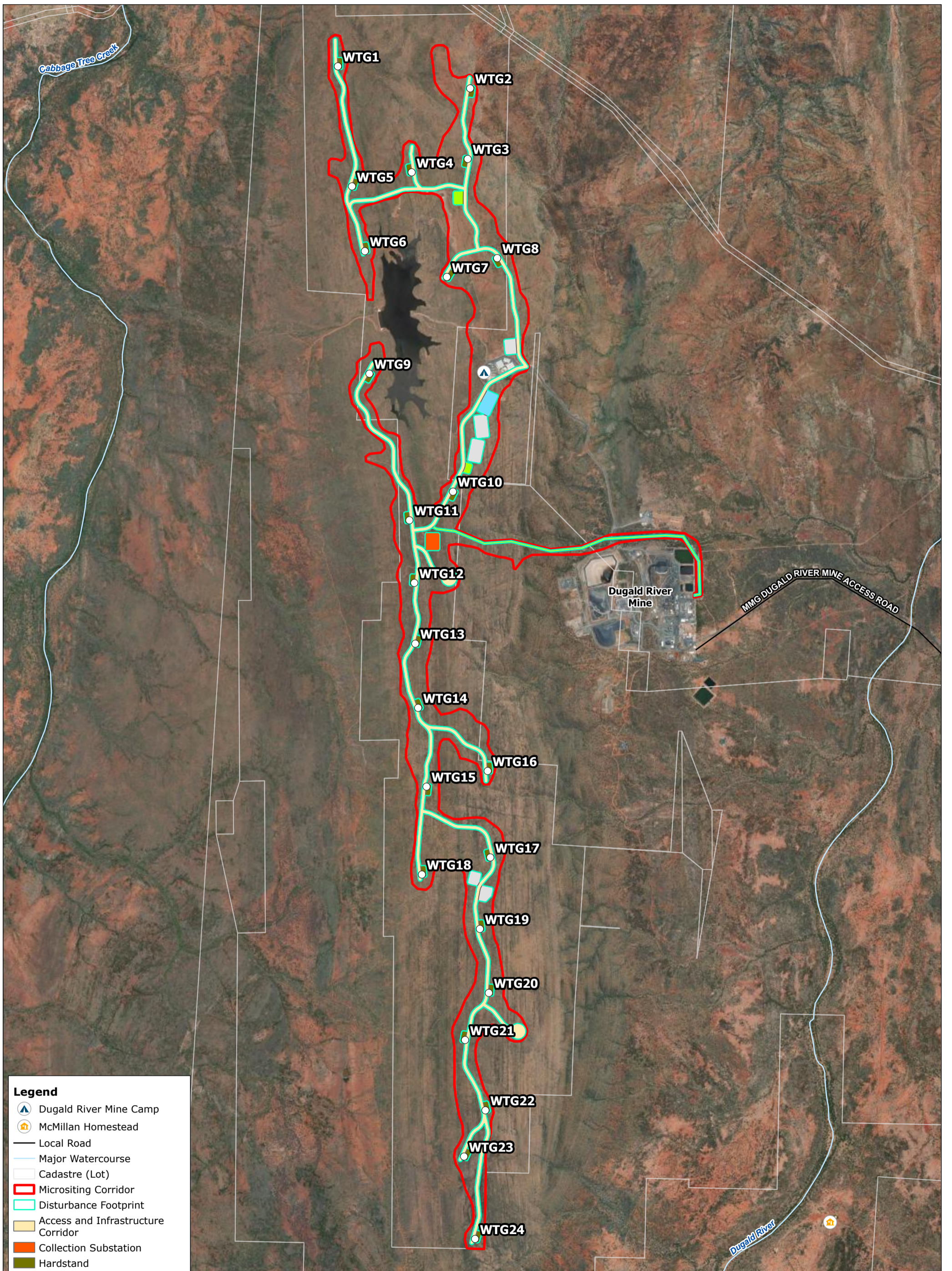
Coordinate System:
GDA2020 MGA Zone 54
Date: 11/06/2025
Created By: MB
Drawing Size: A3

0 2 4Km 1:100,000

F2-1 Project Regional Context

Dugald River Wind Farm

Client: MMG



Legend

- Dugald River Mine Camp
- McMillan Homestead
- Local Road
- Major Watercourse
- Cadastre (Lot)
- Micrositing Corridor
- Disturbance Footprint
- Access and Infrastructure Corridor
- Collection Substation
- Hardstand
- Laydown Area
- Laydown Area / Office
- Transmission Line Corridor
- Traffic Control

Source:
 Base Data - QSpatial
 Imagery - ESRI World Imagery

Coordinate System:
 GDA2020 MGA Zone 54
 Date: 11/06/2025
 Created By: MB
 Drawing Size: A3

0 0.5 1km

1:35,000

F2-2 Project Layout

Dugald River Wind Farm

Client: MMG

3. METHODOLOGY

This SIA has been prepared in accordance with the SIA Guideline with a view to minimise social impacts and enhancing benefits, in-line with good international industry practice. Additionally, this SIA has been prepared to support the development execution of a CBA with the Cloncurry Shire Council for the purposes of reinforcing a 'Social Licence to Operate' for the Project.

The SIA was completed sequentially, through five tasks, as depicted in **Figure 3-1**, and described in the following sections.

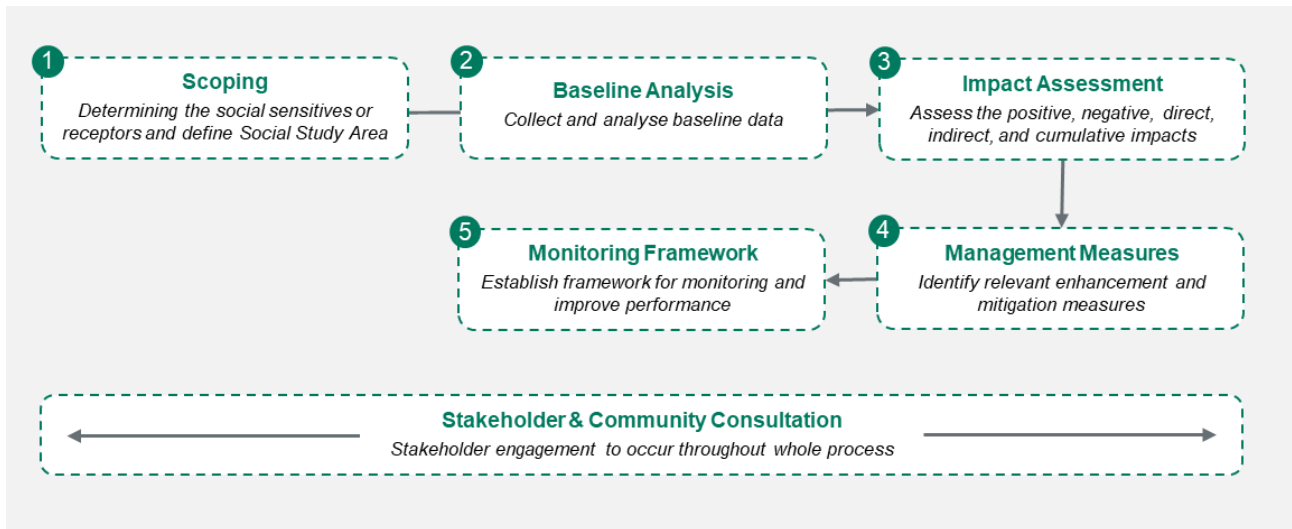


FIGURE 3-1 SIA PROCESS

3.1 TASK #1: SCOPING

Task #1 establishes the scope of the SIA, ensuring it is appropriately scaled and consistent with the SIA Guideline (DSDIP, 2025). The scoping process helps to confirm the impacts that are likely to occur and should be considered further in the SIA, as well as identify the impacts that are not likely to occur and should not be considered further in the SIA (or are scoped out).

The first step of this task is to agree on the Project Description (refer to **Section 2**) and define the Social Study Area, as this will provide the appropriate grounding and content from within which the direct and indirect impacts of the Project can be readily identified.

As per the requirements of the SIA Guideline (DSDIP, 2025), the Social Study Area considers the following:

- The nature and scale of the proposed Project, including associated infrastructure;
- The scope of the potential social impacts (throughout the Project lifecycle);
- The location and characteristics of potentially affected communities (refer to **Box 3-1**) and receptors (refer to **Box 3-2**) – including urban/rural centres and land use patterns;
- Key built and natural features, such as infrastructure;
- Native Title rights and other interests held by Aboriginal and Torres Strait Islanders; and
- The location of other projects in the region which may contribute to cumulative social impacts over time.

BOX 3-1 POTENTIALLY AFFECTED COMMUNITY DEFINITION

Potentially affected communities are defined in the SIA Guideline (DSDIP, 2025) as, "...those local and/or regional communities that may be affected by a proposed project, whether negatively or positively."

BOX 3-2 RECEPTOR AND STAKEHOLDER DEFINITIONS

The term **stakeholder** is used to define individuals or groups who may be affected by or have an interest in a project or operation. Not all stakeholders will experience social impacts from a project and/or operation. Those stakeholders who are affected by a project and/or operation are termed as **receptors**.

3.2 TASK #2: BASELINE ANALYSIS

The social baseline describes the local social context of the Social Study Area. It documents the existing social environment, conditions and trends relevant to the impacts identified. The social baseline is a benchmark against which social impacts can be predicted and analysed. The social baseline also seeks to capture community values, and how people and the things they value may be impacted by a project.

As per the SIA Guideline (DSDIP, 2025), the following has been considered, where relevant, as part of the baseline analysis:

- The demographic profile of potentially affected communities;
- Community characteristics, such as community culture and values;
- The capacity of those potentially affected to participate in the community and stakeholder engagement;
- An overview of land use and key industries in the region;
- The capacity and accessibility of infrastructure, facilities and services, including education, health and emergency services;
- The existing housing and accommodation market, including availability, capacity and affordability;
- Local travel behaviour, such as methods of travel and key transport infrastructure and services;
- The local and regional labour market, including an assessment of the likely availability of personnel with skills relevant to the Project; and
- Other renewable, resource, and infrastructure projects in the area, both planned and currently operating, based on publicly accessible information.

The data used in the baseline analysis is derived from the Dugald River Socio-Economic Baseline Study and Dugald River Social Impact and Opportunities Assessment, prepared in 2024 for MMG by Bina Sustainable Solutions Pty Ltd, in accordance with the MMG Limited Social Performance Standard. The MMG Limited Social Performance Standard requires that the Social Baseline, Impacts and Opportunities Assessment for the DRM is to be reviewed and updated every five years.

Accordingly, the Dugald River Socio-Economic Baseline Study provides up-to-date information as it pertains to the communities relevant to the ongoing operation of the DRM, wherein the Project is located.

As this SIA draws from the Dugald River Socio-Economic Baseline Study and Dugald River Social Impact and Opportunities Assessment, it has been informed by both primary and secondary data sources, including the outcomes of desktop research, statistical data (Queensland Regional Profiles developed by the Queensland Government Statistician’s Office of the Queensland Treasury and the Australian Bureau of Statistics Census data), State and Local Government planning reports, and a field study which comprised interviews (in December 2023), correspondence, and direct stakeholder engagement.

Augmenting the information provided through the Dugald River Socio-Economic Baseline Study, community and stakeholder engagement was undertaken by MMG between July 2024 and April 2025.

3.3 TASK #3: IMPACT ASSESSMENT

Following the completion of the prior phases, the social impacts were predicted and evaluated in accordance with the impact assessment process (refer to **Figure 3-2**). This impact assessment process took into consideration:

- The characteristics of the Project, including the timing, duration and intensity of the proposed construction and operational activities;
- The issues raised by the stakeholders during the period of community and stakeholder engagement conducted by MMG between July 2024 and April 2025; and
- The outcomes of the technical studies undertaken for the Project.

The impact assessment process involved the assessment of potential positive and negative direct, indirect and cumulative impacts, in line with international good practice.

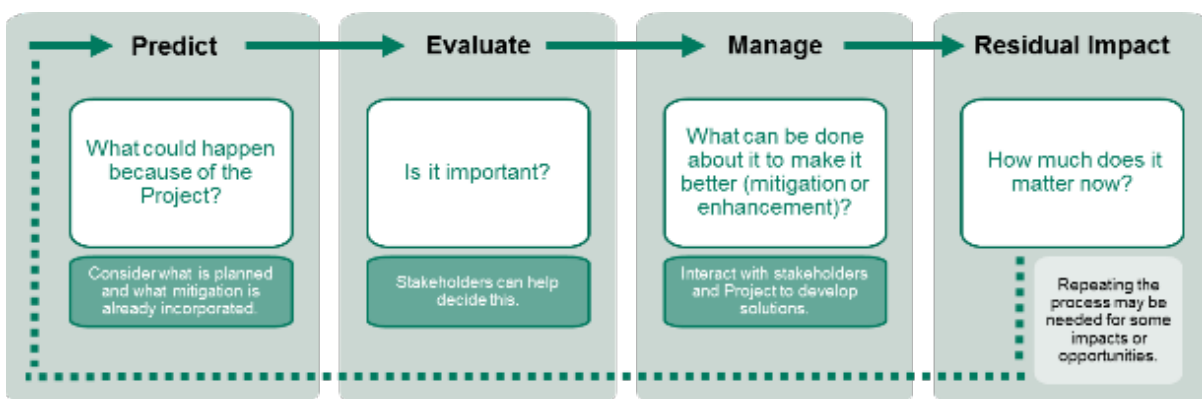


FIGURE 3-2 IMPACT ASSESSMENT PROCESS

Social impacts are typically assessed to determine their significance, based on the likelihood (defined in **Table 3-1**) of the social impact occurring, and the potential magnitude of the social impact, should it occur. Magnitude is a reflection of the ‘size’ or degree of change caused by the impact; it is a function of one or more characteristics including the extent, duration, scale and frequency of the impact (refer to **Table 3-2** and **Table 3-3**).

TABLE 3-1 LIKELIHOOD LEVELS

Likelihood Level	Meaning
Low	The event is unlikely but may occur at some time during normal construction and/or operational conditions.
Medium	The event is possible or likely to occur at some time during normal operating construction and/or operational conditions.
High	The event will or is almost certain to occur during normal construction and/or operational conditions.

TABLE 3-2 MAGNITUDE CHARACTERISTICS

Magnitude Level	Extent	Duration	Scale	Frequency
Negligible	Household	Temporary	Minor change	Rare
Small	Local Communities / Businesses	Short-term	Perceptible change	Occasional
Medium	Regional	Medium-term	Clearly evident change	Often
Large	Queensland	Long-term	Substantial change	Constant

TABLE 3-3 MAGNITUDE LEVELS

Magnitude Level	Meaning
Negligible	The change that occurs remains within the range commonly experienced by receptors.
Small	There is a perceptible difference or change from the baseline conditions. The impact is local (i.e. affects local communities and local businesses), occurs over a short period of time, and/or is rare.
Medium	The difference or change from the baseline conditions is clearly evident. The impact is experienced by the receptors in the Social Study Area over a long period of time.
Large	There is a substantive change from the baseline conditions. The impact is experienced throughout the Social Study Area (or beyond) and is persistent.

The likelihood of an impact occurring along with its magnitude of impact as assessed above combine to yield a rating of social impact significance, as described in **Table 3-4**). Where a positive social impact is identified, it is designated as 'positive', despite the varying likelihood levels.

When assessing the social impacts of each operation, ERM has employed the precautionary principle. Accordingly, where there is uncertainty in relation to the likelihood or magnitude of an impact, a higher impact ranking has been assigned in order to ensure sufficient management measures are put in place. As the operations evolve, this uncertainty may change; when this occurs, the impacts should be reviewed and the significance amended accordingly.

TABLE 3-4 IMPACT SIGNIFICANCE MATRIX

		Likelihood		
		Low	Medium	High
Magnitude	Negligible	Negligible	Negligible	Negligible
	Small	Negligible	Minor	Moderate
	Medium	Minor	Moderate	Major
	Large	Moderate	Major	Major
	Positive	Positive		

3.4 TASK #4: MANAGEMENT MEASURES

Once the significance of the social impacts has been identified, the impact mitigation and management measures (including measures to mitigate predicted negative impacts and enhance predicted impacts) and benefit enhancement measures can be determined.

Where avoidance or minimisation is not possible, management strategies are identified. Where an impact is predicted to be positive, measures to enhance positive impacts are identified to ensure the maximum benefit to the community across all impact significance ratings.

The following factors were considered in the development of management measures:

- Ensuring a clear connection between the mitigation measure and the negative social impact being mitigated;
- Whether there is an applicable standard that defines what is acceptable;
- Whether the Project is the sole or primary cause of the negative social impact, and the scale of its relative contribution to the overall or cumulative impact;
- Whether the mitigation measure requires action by another party separate to the proponent;
- Whether the mitigation measure itself is likely to cause secondary social impacts;
- Whether the mitigation measure is reasonable or practicable;
- Whether and in what ways the mitigation measure is acceptable to affected people;
- Whether the mitigation measure will address all reasonably foreseeable scenarios; and
- Whether the mitigation approach is prescribed in a government policy, or if alternative formalised arrangements are required.

Social impact significance, as outlined in **Table 3-4** is used to determine the level of management required with a proportional focus on impacts with a higher impact significance (i.e. medium, high and very high). The impact assessment and impact significance ratings derived in the assessment are revised after the application of management and mitigation strategies have been applied to provide a residual impact significance rating for each impact.

These management and mitigation strategies are arranged according to Project phase (e.g. construction and operation) and into the key matters contemplated by the SIA Guideline: Community and stakeholder engagement; Workforce management; Housing and

accommodation; Local business and industry procurement; and Health and community well-being.

Management and mitigation measures focus on effective, adaptive, and actionable measures and includes consideration of the likelihood of their implementation and sustainability from the community's perspective.

3.5 TASK #5: MONITORING FRAMEWORK

The accuracy of the impact assessment, and the effectiveness of management measures recommended, needs to be verified via ongoing monitoring. Accordingly, a monitoring framework is proposed which includes and program for monitoring the predicted social impacts against actual impacts and describes the:

- Desired outcomes in social terms;
- Indicator(s) that will be used to monitor change;
- Targets against which performance will be assessed;
- Methods that will be used to monitor the social impact;
- Frequency of monitoring;
- Roles and responsibilities involved in the monitoring framework; and
- The process for responding to monitoring results, including the process, and roles and responsibilities for identifying and implementing adaptive management strategies as required.

The framework also outlines any relevant social incident notification and reporting process, a program for ongoing analysis of social impacts (positive and negative), identification of any data gaps and how they might be addressed, and processes for reviewing and reporting on the results of monitoring.

4. SCOPING

This section details the Social Study Area for the Project. A defined Social Study Area ensures that the SIA is appropriately scaled and consistent with regulatory requirements. Additionally, this section highlights the policy and strategic planning context relevant to the Project and the Social Study Area, as well as any surrounding projects that may be of relevance to the SIA.

4.1 APPROACH TO DETERMINING THE SOCIAL STUDY AREA

Determining the Social Study Area for the Project involves understanding the nature of the Project, the characteristics of the surrounding communities, and how potential positive and/or negative impacts will be experienced by different community members/groups.

In determining the Project's Social Locality, the following aspects were taken into consideration:

- The number of WTGs and their locations across the Micrositing Corridor, and the layout of the associated infrastructure, such as the Met Masts, access tracks, hardstand areas, collection substation and underground and overhead powerlines, material laydown areas, construction laydown areas, and the operations and maintenance facility.
- The location of these components within the overall Micrositing Corridor, relative to sensitive land uses. This includes understanding the underlying tenure; proximity to neighbouring dwellings, towns/townships and communities; environmental values; and key topographical features.
- Construction, operation and decommissioning phase activities, such as:
 - Land clearing and ongoing access for maintenance;
 - Workforce requirements, including skills required and accommodation arrangements;
 - Goods and services required by the Project; and
 - Haulage and light vehicle routes to and from the Micrositing Corridor.
- The existing extents and operational impacts of the DRM. As the Project is located along the Knapdale Range, immediately west of the main mining infrastructure, including the Tailings Storage Facility, pipeline infrastructure and exploration pads.

When considering these aspects, it was determined that the Social Study Area should include the Micrositing Corridor, the area surrounding the Micrositing Corridor wherein noise, visual and other amenity impacts may occur, the haulage routes where similar amenity impacts may be experienced, and the communities and larger population centres that may provide workers or goods and services to the Project.

Based on the above considerations, it was also determined that the Social Study Area does not include the following:

- The complete extent of haulage routes from the Port of Townsville where within the confines of the port (i.e. port berth and storage areas) and where State/National highways are to be used by the Project. Large parts of the haulage routes identified for potential use by the Project have already been designed and constructed to accommodate large-scale industrial vehicles (i.e. B-Doubles). As such, the sections of haulage routes to be included in the Social Study Area have been limited to those which are relevant to localised

community concerns, or where likely to be used for non-material transport related purposes (e.g. worker movements, local school bus routes, etc.).

- While the City of Townsville acts as the primary centre for mining-related services, equipment supply, and logistics support in North Queensland, it has been excluded from the Social Study Area due to the distance to/from the Project (approximately 850 km) and the limited extent of Project-related impact (outside of the use of Port of Townsville and its associated storage facilities) anticipated to be experienced by residents.

4.2 DESCRIPTION OF THE SOCIAL STUDY AREA

The Project is located approximately 63 km north-west of the township of Cloncurry, approximately 84 km north-east of the township of Mount Isa, and approximately 21 km south of the rural town of Kajabbi. The Project is entirely contained within the Cloncurry Shire Council LGA, on land that is currently used for low-intensity cattle grazing and mining activities.

The Project's Micrositing Corridor extends across an area of approximately 631.2 ha. There are two landowners/leaseholders within, or in the immediate proximity of, the Micrositing Corridor, being the State of Queensland (landowner) and the McMillan family (leaseholder). The McMillan Homestead is located approximately 3.6 km to the east of the nearest WTG associated with the Project. The property on which the homestead is located is considered a 'host lot'¹ for the Project under the provisions of State Code 23 Wind Farm Development.

In addition to the McMillan Homestead, an additional sensitive receptor, the DRM Accommodation Camp, is located approximately 1 km to the east of the nearest WTG associated with the Project. The Accommodation Camp, owned and operated by MMG, provides housing and supporting amenities for workers employed at DRM. The Accommodation Camp is approved under the DRM Environmental Authority, obtained in accordance with the provisions of the *Environmental Protection Act 1994* and *Mineral Resources Act 1989*. As with the homestead, the DRM Accommodation Camp is located on a 'host lot' under State Code 23 Wind Farm Development.

It is anticipated that the goods and services to support the construction phase of the Project will be sourced, where possible, from Cloncurry and Mount Isa, however if/where needed these may be sourced from locations within other parts of Queensland, Australia, or internationally. It is noted however, that given their distance from the Micrositing Corridor, it is not anticipated that these communities (as well as the rural town of Kajabbi) will experience direct impacts from the Project.

Further, given the interrelationship between the location of the Project and the DRM, the Social Study Area has considered the extent of existing social impacts (positive and negative) associated with the mine. This includes consideration of the stakeholders, communities, and townships that are influenced and/or impacted by the DRM, such as those within the North West Minerals Province (NWMP) Resource Region and the Cloncurry LGA.

¹ A 'host lot' is defined in State Code 23 Wind Farm Development as, "...a parcel of land (lot(s)) that accommodates any part of a wind farm development"

Accordingly, the Social Study Area is depicted in **Figure 4-1**, and comprises the following three components:

- The **Micrositing Corridor and immediate surrounding areas**, inclusive of the McMillan Homestead at Mt Roseby Station, DRM Accommodation Camp, and the DRM. It is noted that the DRM Operations Area is located approximately 2.5 km from the Accommodation Camp, and approximately 2 km from the Project.
- The likely **transportation and haulage routes**, comprising the route from the gatehouse of the DRM to Project site access, and the route from the DRM to Cloncurry along Burke-Developmental Road. Other sections of the haulage route have not been included given they have already been designed and constructed to accommodate large-scale industrial vehicles (refer to **Section 4.1**).
- The **surrounding rural towns/townships and cities**, which may provide goods and services or host Drive-in-Drive-Out (DIDO) workers, to support the construction phase of the Project. These include the rural town of Kajabbi, township of Cloncurry, and the city of Mount Isa.

4.2.1 ABS DATASETS

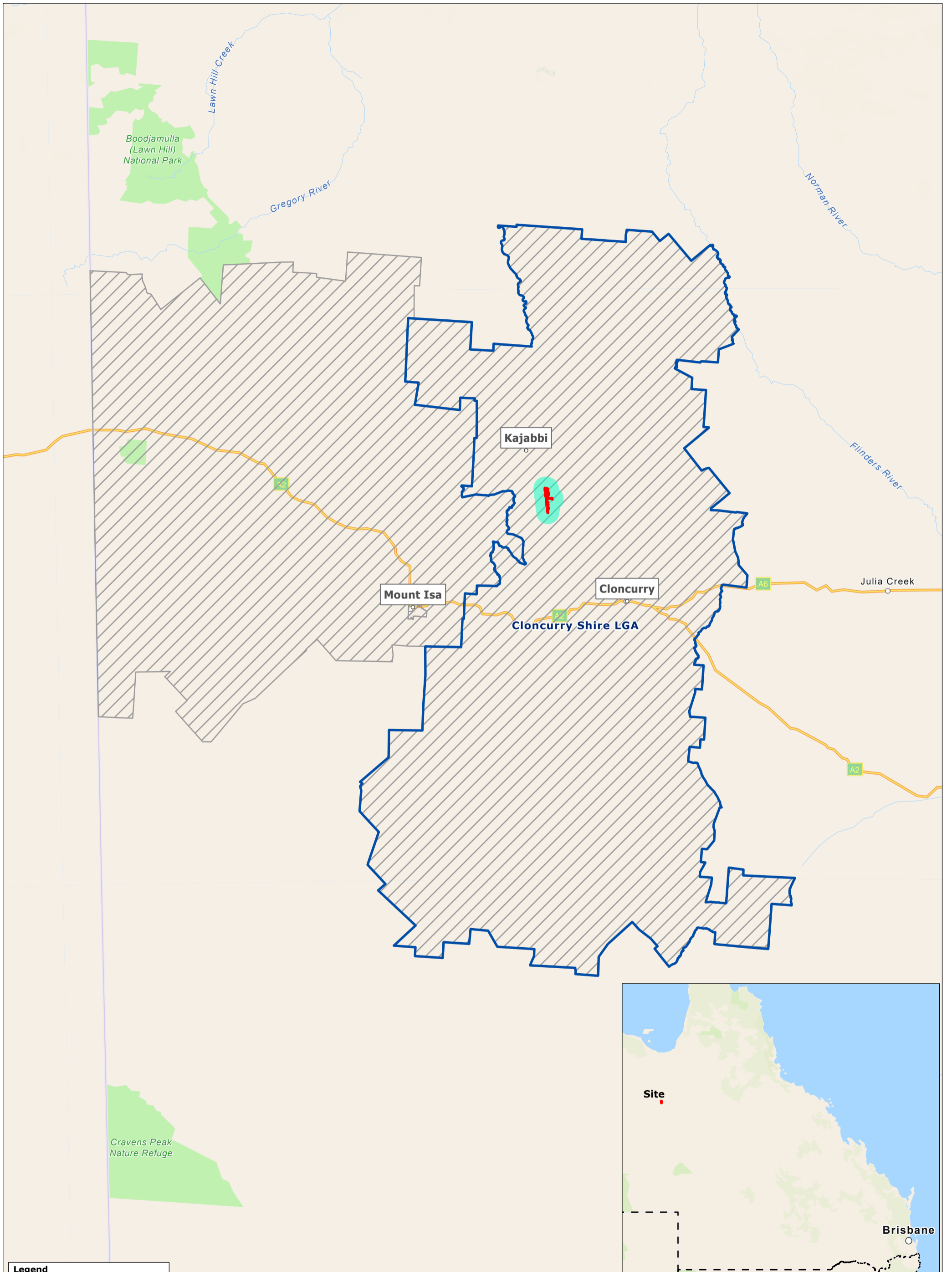
The data presented in the Social Baseline (refer to **Section 5**) provides an understanding of the Social Study Area, including the Micrositing Corridor and immediate surrounding areas, transportation and haulage routes, and surrounding rural towns/townships and cities.

Table 4-1 outlines the primary ABS datasets used to provide key demographic and social baseline data across the Social Study Area.

TABLE 4-1 SUMMARY OF RELEVANT ABS DATASETS

Location	Approximate Area	ABS Data Reference
Cloncurry Shire LGA	47,971 km ²	LGA32450
NWMP Resource Region	84,120 km ²	Statistical Area 2 (SA2) 315021405 (Mount Isa)
		SA2 315021406 (Mount Isa Surrounds)

As noted in **Table 4-1**, the Social Study Area includes the Cloncurry Shire LGA, which captures the township of Cloncurry and the rural town of Kajabbi, as well as the NWMP Resource Region which includes both the city of Mount Isa and the surrounding area (inclusive of the Cloncurry Shire LGA). Using the NWMP Resource Region data in addition to the Cloncurry Shire LGA data enables a regional contextual lens to be placed over the Social Study Area.



Legend

- Micrositing Corridor
- 4.9km Buffer
- North West Minerals Province
- LGAs

Source:
 Base Data - QSpatial
 Imagery - ESRI Basemap


Coordinate System:
 GDA2020 MGA Zone 54

Date: 18/06/2025

Created By: HD

Drawing Size: A3

0 10 20 30km


 1:1,700,000

F4-1 Social Study Area

Dugald River Wind Farm Social Impact Assessment

Client: MMG



4.3 STAKEHOLDER IDENTIFICATION

Based on the Project's Social Study Area (refer to **Section 4.2**), the key stakeholder groups identified as potentially impacted by the Project are outlined in **Table 4-2**. Specific vulnerable groups within these key stakeholder groups have been identified in the social baseline (refer to **Section 5.8**).

TABLE 4-2 KEY STAKEHOLDERS

Stakeholder Group	Stakeholder	Potential Interests/Concerns
Community		
Host Landowner/ Leaseholder	<p>Landowners and/or Leaseholders with the potential to host infrastructure, have already engaged in discussion or have already agreed to host infrastructure.</p> <ul style="list-style-type: none"> The Project has one leaseholder (McMillan family, Mt Roseby Station) and one landowner within the Micrositing Corridor (the State of Queensland) 	<ul style="list-style-type: none"> Access to private land Noise emissions Impacts on pastoral activities Visual amenity Health and safety Security and privacy Localised disruptions Remuneration Land value
Immediate Neighbours	<p>Neighbouring dwellings within a 4.9 km radius of a potential turbine location (relevant to the prospective area of visual impact).</p> <ul style="list-style-type: none"> There is one dwelling located within 4.9 km of the Micrositing Corridor, the McMillan Homestead. The DRM Accommodation Camp located approximately 1 km to the east of the nearest WTG associated with the Project. <p>Harmony Gold Mining Company Ltd, who acquired the planned (yet to commence mining) Eva Copper Project, located to the north of the Micrositing Corridor.</p>	<ul style="list-style-type: none"> Access to private land Noise emissions Impacts on pastoral activities or future mining activities Visual amenity Health and safety Security and privacy Localised disruptions Traffic disruptions Land value
Aboriginal Groups	<p>The Kalkadoon People are the registered Native Title holders (QU579/2005 Kalkadoon People #4 (QCD2011/007) of the Micrositing Corridor and surrounding areas and are party to an ILUA, registered on 14 April 2025.</p> <p>The Kalkadoon People are represented through Kalkadoon Native Title Aboriginal Corporation (KNTAC).</p>	<ul style="list-style-type: none"> Tangible and intangible cultural heritage values Artefacts/chance finds
Broader Community	<p>Community members and/or groups that are located outside of the 4.9 km radius of a potential WTG, comprising those within:</p> <ul style="list-style-type: none"> Kajabbi Cloncurry Mount Isa 	<ul style="list-style-type: none"> Community well-being Construction traffic disruptions Health and safety Visual amenity Cumulative impacts Noise impacts

Stakeholder Group	Stakeholder	Potential Interests/Concerns
		<ul style="list-style-type: none"> • Potential improvement to local road infrastructure • Sponsorship opportunities • Improved economic/industry diversity • Employment opportunities • Increased training and skills • Renewable energy benefits
Emergency Services	<p>Local branches of emergency services located within Cloncurry and Mount Isa, these include:</p> <ul style="list-style-type: none"> • Cloncurry Police Station • Mount Isa Police Headquarters • Cloncurry Fire Station • Mount Isa Fire Station • Cloncurry Ambulance Station • Cloncurry Hospital • Mount Isa Hospital • Mount Isa Ambulance Station 	<ul style="list-style-type: none"> • Workplace health and safety • Community safety • Site access during emergencies • Fires/floods and/or other disasters • Over dimensioned vehicle movements
Regulatory		
State/Federal Government	<p>Key State Government Authorities and Members of the Parliament, including:</p> <ul style="list-style-type: none"> • Department of State Development, Infrastructure and Planning (DSDIP) • Department of Natural Resources and Mines, Manufacturing and Regional and Rural Development • Department of Climate Change, Energy, the Environment and Water • Department of Transport and Main Roads (DTMR) • Bureau of Meteorology 	<ul style="list-style-type: none"> • Community feedback • Environmental impacts • Project approval/permits • Regulatory compliance
Local Government	<p>The Cloncurry Shire Council representatives and executives including but not limited to the following:</p> <ul style="list-style-type: none"> • CEO: Philip Keirle • Director of Corporate Services: Gary Pemberton • Director of Infrastructure and Environment: Chris Rohan • Director of Projects: Richard Wilkes • Director of Community Services and Economic Development: Mathew Blakeley Cr. Greg Campbell (Mayor) • Cr. Sam Daniels • Cr. Vicky Campbell • Cr. Nathan Keyes 	<ul style="list-style-type: none"> • Employment and economic opportunities • Community consultation • Community well-being • Community benefits agreement / investment • Impacts on local residents and businesses • Impacts on local roads and infrastructure

Stakeholder Group	Stakeholder	Potential Interests/Concerns
	<ul style="list-style-type: none"> Cr. Jane McMillian Cr. George Muller 	
Neighbouring Local Governments	Representatives and executives from the surrounding Local Governments within the wider North Queensland region, including: <ul style="list-style-type: none"> Mount Isa City Council McKinlay Shire Council Richmond Shire Council Flinders Shire Council Charters Towers Regional Council Townsville City Council 	<ul style="list-style-type: none"> Employment and economic opportunities Community consultation Cumulative impacts
Other Industry Stakeholders		
Commercial Businesses and Organisations	Regional businesses within the Social Study Area, including those located within Cloncurry and Mount Isa.	<ul style="list-style-type: none"> Employment and economic benefits/impacts

4.4 POLICY AND REGULATORY CONTEXT

This section describes the policy and regulatory context relevant to the SIA and the Social Study Area. Policy and/or regulatory documentation relevant to the broader strategic context of the Project is provided in the Development Application for the Project.

4.4.1 PLANNING ACT 2016

The *Planning Act 2016* (Planning Act) provides the overarching statutory framework for planning and development assessment in Queensland. Schedule 10, Part 21, Division 2 of the Planning Regulation specifies that the assessment benchmark for wind farms is the State Development Assessment Provisions (SDAP). SDAP Version 3.2 includes State Code 23: Wind Farm Development, which has been prepared to ensure risks to individuals, communities and the environment from wind farm projects are adequately identified, assessed, and where appropriate, mitigated and/or managed.

On 1 May 2025, the *Planning (Social Impact and Community Benefit) and Other Legislation Amendment Bill 2025* was introduced into State Parliament. The Bill proposes amendments to the Planning Act and other components of Queensland's planning framework in order to make wind farms and large-scale solar farms 'impact assessable' and establish a new Community Benefit System, to occur prior to the Development Assessment process. The Community Benefit System requires that a wind farm or large-scale solar farm development be subject to a CBA. This CBA must be informed by a SIA, with both documents submitted to enable the lodgement of a "properly made" Development Application.

4.4.2 QUEENSLAND SIA GUIDELINE

In Queensland, the preparation of a SIA is a legislative requirement for all projects subject to an Environmental Impact Statement (EIS) process under the *State Development and Public Works Organisation Act 1971* and the *Environmental Protection Act 1994*, with the SIA Guideline acting as a key guidance document for the preparation of EIS, specifically the accompanying SIA.

In June 2025, the SIA Guideline (DSDIP, 2025) was amended as part of the package supporting the *Planning (Social Impact and Community Benefit) and Other Legislation Amendment Bill 2025* to incorporate the SIA triggers under the Planning Act relevant to renewable energy projects (wind and large scale solar).

The SIA Guideline details the information that is to be included in a SIA, and provides guidance as to the identification, assessment, management, and monitoring of potential social impacts in Queensland. This SIA has been prepared in accordance with the SIA Guideline.

4.4.3 NORTH WEST QUEENSLAND REGIONAL PLAN 2010

The Project is located within the Cloncurry Shire LGA, which is subject to the provisions of the North West Regional Plan 2010 (Regional Plan). The Regional Plan aims to manage change and shape the future prospects of the communities in the North West Region by:

- Addressing key economic, social and environmental issues;
- Identifying infrastructure and service needs;
- Maximising the benefits and managing impacts of major projects;
- Driving innovation and productivity;
- Mobilising public, private and community sectors; and
- Aligning efforts across agencies and all levels of government.

These objectives are supported by eight strategic directions contained within the Regional Plan. A summary of the strategic directions relevant and consistent to the social aspects of the Project are outlined in **Table 4-3**.

TABLE 4-3 PROJECT COMPLIANCE WITH THE REGIONAL PLAN

Strategic Direction	Project Compliance
Creating a more sustainable future	<p>The Project promotes the co-location of renewable energy and mining assets on underutilised rural land.</p> <p>The Project provides an alternative source of energy for the region which increases the capacity and resilience of the North West Power System and assists in achieving the outcomes of the Queensland Governments Renewable Energy Plan.</p> <p>The Project will secure the long-term energy demands of the DRM owned and operated by MMG. MMG is committed to developing base metal projects that achieve a low carbon future. Additionally, the Project provides a diversification of land uses which provide employment opportunities through the renewable energy sector.</p>
Protecting regional landscapes and supporting regional production values	<p>The Project is located within a defined Micrositing Corridor which has been carefully designed by MMG to avoid and/or minimise impacts on regional production values, inclusive of agricultural pursuits and minerals.</p>
Creating liveable communities	<p>The Project supports the existing services of the local townships by stimulating the local economy through job creation and reinforcing the role of larger centres in smaller communities, inclusive of those in the Social Study Area (i.e. Cloncurry and Mount Isa).</p> <p>Additionally, the existing character and visual amenity of surrounding rural towns (Kajabbi), townships (Cloncurry) and cities (Mount Isa), have been accounted for with respect to the Project's location.</p>

Strategic Direction	Project Compliance
Promoting a dynamic, robust and diversified economy	<p>The primary purpose of the Project is to provide long-term energy security to the DRM. The DRM is a major source of employment and provides significant economic benefit to the region. Additionally, the Project will support the long-term security of the DRM through providing cost-effective power options.</p> <p>As outlined in Section 2, the Project is anticipated to have a two year construction timeframe, and at its peak, is expected to create 100 FTE jobs. The Project is expected to have variably sized maintenance crews which will range from small teams of three to five people for regular maintenance and between 15-20 during major refurbishments and uplift.</p>
Providing infrastructure and services	<p>Power which is not utilised by the DRM will be transferred into the North West Power System which services the region, and potentially the National Energy Market in the future. In doing so the Project can provide additional power supply and resilience to residents and businesses within the Social Study Area.</p>
Adapting to climate change	<p>The Project is for a renewable energy asset which supports the long-term decarbonisation of the DRM, and the North West region more broadly.</p> <p>The Project will displace an additional 40% of electricity related emissions from the DRM, which will contribute to MMG Limited's commitment to achieving net zero Scope 1 and 2 emissions by 2050.</p>

4.4.4 CLONCURRY SHIRE PLANNING SCHEME 2016

The Cloncurry Shire Council Planning Scheme 2016 (Planning Scheme) provides the framework for managing development in a way that advances the Planning Act and to meet the needs of the Cloncurry Shire.

The strategic framework within the Planning Scheme sets the policy direction for the scheme and forms the basis for ensuring appropriate development occurs in the Cloncurry LGA. An assessment of how the Project complies with the relevant social sections of the strategic framework is provided in **Table 4-4** below.

TABLE 4-4 APPLICABLE STRATEGIC OUTCOMES

Strategic Outcome	Project Compliance
<p>Natural Resources: Cloncurry is a region rich with natural resources, agricultural resources and scenic amenity values.</p>	<p>The Project is designed to be co-located with the existing mining operations at DRM and existing low-intensity cattle grazing land uses. The Project will provide renewable energy to the DRM to help secure the long term future of the mine, with excess generation to be exported to the regional energy grid to increase supply resilience. Furthermore, the Micrositing Corridor has been located to respond to the current and future needs of the DRM and will not impact on mining operations.</p> <p>The Project is located such that coexistence with existing agricultural activities can be maintained.</p>
<p>Economic Development: Cloncurry Shire has a growing and prosperous economy, supported by the Major Rural Activity Centre of the Cloncurry Township.</p>	<p>The primary purpose of the Project is to provide long-term energy security to the DRM. The DRM is a major source of employment and provides significant economic benefit to the region. Additionally, the Project will support the long-term security of the DRM through providing cost-effective power options.</p>

Strategic Outcome	Project Compliance
	As outlined in Section 2 , the Project is anticipated to have a two year construction timeframe, and at its peak, is expected to create 100 FTE jobs. The Project is expected to have variably sized maintenance crews which will range from small teams of three to five people for regular maintenance and between 15-20 during major refurbishments and uplift.
Infrastructure: Cloncurry Shire has a well-planned, coordinated, safe and efficient network of infrastructure, which is readily available to the majority of the Cloncurry Township residents.	The Project supports the strategic outcome for infrastructure by providing a renewable energy facility consistent with the low carbon targets in Queensland and to support the North West region.

4.5 SURROUNDING PROJECTS

There are several existing projects within the Social Study Area, and in the nearby region, that have the potential to cause cumulative impacts for stakeholders/receptors, primarily related to the construction phase (e.g. traffic, sourcing of workforce, etc.).

A review of the Queensland Treasury's Electricity Generation Map and the State Development, Infrastructure and Planning's Coordinated Projects Map, has identified eight projects within Social Study Area of the Project:

1. APA Group - Mica Creek Solar Farm (44 MW) – operational
2. Diamantina Power Station Pty Ltd - Leichhardt Gas (60 MW) – operational
3. Diamantina Power Station Pty Ltd - Diamantina Gas (242 MW) – operational
4. Mount Isa Mines - Xstrata Gas (33 MW) – operational
5. Powerlink - CopperString Project – under construction
6. APA Group - Sybella Creek Solar Farm (77 MW) – under assessment
7. Vast Solar - North West Queensland Hybrid Power Project (50 MW) – under assessment
8. Harmony Gold Mining Company Ltd - Eva Copper Mine Project – early development

In addition, there are four large-scale projects located outside the Social Study Area that may contribute to cumulative impacts given their potential reliance on the township of Cloncurry and/or city of Mount Isa. These projects comprise:

1. QEM Ltd - Julia Creek Renewables Project (500 MW) – early feasibility
2. QEM Ltd - Julia Creek Vanadium and Energy Project – under assessment
3. Vecco Industrial Pty Ltd - Vecco Critical Minerals Project – under assessment
4. Richmond Vanadium Technology Pty Ltd - Richmond-Julia Creek Vanadium Project – under assessment

Moreover, there are a number of Mining Leases (ML), Exploration Permit Minerals (EPM), Exploration Permit Geothermal (EPG), Mineral Development Licence (MDL) and an Authority to Prospect (ATP) within the Social Study Area. Of particular relevance are those that intersect with the Micrositing Corridor.

MMG has secured a range of mineral leases within the Micrositing Corridor to support the operation of the DRM mining activities. Additionally, a ML has been granted over the northern extent of the Micrositing Corridor as follows:

- ML 90164 (Granted 13 November 2012, Expiry 30 November 2037, held by Eva Copper Mine Pty Ltd).

Additionally, the southern extent of the Micrositing Corridor has the following EPMs:

- EPM 25757 (Granted 12 November 2015, Expiry 11 November 2025, held by Roseby Copper (South) Pty Ltd);
- EPM 12163 (Granted 27 June 2003, Expiry 26 June 2030, held by MMG); and
- EPM 28977 (Granted 10 March 2025, Expiry 9 March 2030, held by MMG).

5. SOCIAL BASELINE

The section provides an overview of the social baseline for the Project's Social Study Area through a series of socio-economic datasets. In line with the SIA Guideline, the social baseline describes the Social Study Area without the Project and informs the assessment of impacts detailed in **Section 7**.

Data contained within this section is sourced from the Dugald River Socio-Economic Baseline Study, prepared by Bina Sustainable Solutions Pty Ltd.

5.1 LAND USE CONTEXT

The Project is located on State Land, formally described as Lot 92 on SP303378, Lot 1 on AP23793 and Lot 36 on AP23793, and within the Rural Zone of the Cloncurry Shire Planning Scheme 2016.

The land within the Micrositing Corridor and surrounds is intended for use as low-intensity cattle grazing and mining. The DRM is the primary land use within and adjacent to the Micrositing Corridor, with the planned (yet to commence) Eva Copper Mine Project located to the north of the Project.

The Micrositing Corridor itself is located within the Northwest Highlands bioregion and includes a range of ecological and landscape features due to a mix of subregions with various geological histories.

5.2 DEMOGRAPHIC PROFILE

Table 5-1 draws on the ABS datasets listed in **Table 4-1** in order to provide a demographic overview of the Social Study Area.

TABLE 5-1 KEY DEMOGRAPHIC INDICATORS

ABS Area	Key Indicators
Cloncurry Shire LGA LGA32450	<p>Population</p> <ul style="list-style-type: none"> Estimated Resident Population (ERP) of 3,851 persons as at 30 June 2023 Average annual growth rate of 2.8% over five years Average annual growth rate of 1.5% over 10 years Population projected to be 3,958 persons as at 30 June 2046 Increase of 0.3% per year over 25 years <p>Age and Gender</p> <ul style="list-style-type: none"> Gender in 2021: 43.4% female, 56.6% males Median age projection of 39.8 years as at 30 June 2046 Increase of 3.1 years from a median age projection of 36.7 years as at 30 June 2026
NWMP 315021405 (Mount Isa) 315021406 (Mount Isa Surrounds)	<p>Population</p> <ul style="list-style-type: none"> ERP of 22,791 persons as at 30 June 2023 Population projected to be 22,714 persons as at 30 June 2046 Average annual growth rate of 0.2% over five years Average annual growth rate of -1.0% over 10 years Mount Isa SA2 had the largest population with 18,518 persons Mount Isa SA2 is projected to have the largest population as at 30 June 2046 with 18,448 persons

ABS Area	Key Indicators
	<ul style="list-style-type: none"> Mount Isa Surrounds SA2 had the fastest population growth over five years with 3.0% <p>Age and Gender</p> <ul style="list-style-type: none"> Gender in 2021: 47.6% female, 52.4% male Median age of 32.1 years as at 30 June 2022 Increase of 1.2 years from median age of 31.0 years as at 30 June 2012 Mount Isa Surrounds SA2 had the highest median age of 35.1 years Mount Isa Surrounds SA2 had the largest increase in median age from 30 June 2012 to 30 June 2022 with 1.2 years

Further information relating to language, age and Aboriginal and Torres Strait Islander populations is outlined in **Section 5.8.2**, **Section 5.8.3** and **Section 5.8.4**, respectively.

5.3 ECONOMIC PROFILE

The total labour force within the Social Study Area is approximately 15,457 workers, with **Table 5-2** providing an overview of the employment status of residents. With respect to the workforce, the following was observed regarding unemployment:

- In the Cloncurry Shire LGA, unemployment rates tend to fluctuate, with the rate in March 2023 estimated at 5.0%; and
- Within the NWMP, Mount Isa SA2 had the highest unemployment rate (5.3%) and Mount Isa Surrounds SA2 had the lowest (3.3%). Across the broader NWMP, the unemployment rate has trended down from approximately 8% in 2019 to 4.9%.

TABLE 5-2 LABOUR FORCE STATUS

ABS Area	Labour Force	Unemployed	Unemployment Rate
Cloncurry Shire LGA LGA32450	2,355	78	3.3
NWMP 315021405 (Mount Isa) 315021406 (Mount Isa Surrounds)	13,102	644	4.9

Table 5-3 and **Table 5-4** provide a categorisation of the relevant top occupations and industries throughout the Social Study Area.

The Social Study Area displays a mixed economic composition:

- In the Cloncurry Shire LGA, most local employment opportunities are in 'Mining' (456), followed by 'Agriculture, Forestry and Fishing' (256). The workforce in these industries is predominately male. The main occupations of workforce participants are 'Technicians and Trade Workers' and 'Machinery Operators and Drivers'.
- In the NWMP, the majority of employed people work in 'Mining' (29.3%) and the 'Health Care and Social Assistance' industries (11.3%). The main occupations of the workforce are the same as those within the Cloncurry Shire LGA.

TABLE 5-3 KEY RELEVANT OCCUPATIONS

ABS Area	Year	Labour Force	Technicians and Trades Workers	Professionals	Machinery Operators and Drivers	Clerical and Administrative Workers	Labourers	Managers
Cloncurry Shire LGA LGA32450	2021	2,355	362 (19.8%)	209 (11.4%)	327 (17.9%)	185 (10.1%)	266 (14.6%)	228 (12.5%)
NWMP 315021405 (Mount Isa) 315021406 (Mount Isa Surrounds)	2021	13,102	2,321 (20.7%)	1,812 (16.2%)	1,759 (15.7%)	1,208 (10.8%)	1,137 (10.1%)	965 (8.6%)

TABLE 5-4 KEY RELEVANT INDUSTRIES

ABS Area	Year	Labour Force	Mining	Agriculture, Forestry and Fishing	Transport, Postal and Warehousing	Education and Training	Public Administration and Safety
Cloncurry Shire LGA LGA32450	2021	2,355	456 (25.0%)	256 (14.0%)	151 (8.3%)	96 (5.3%)	143 (7.8%)
NWMP 315021405 (Mount Isa) 315021406 (Mount Isa Surrounds)	2021	13,102	3,287 (29.3%)	374 (3.3%)	153 (4.0%)	885 (7.9%)	762 (6.8%)

5.3.1 INCOME

Table 5-5 provides an overview of the key income indicators within the Social Study Area. Based on the data, the median total personal income and median household income of the Social Study Area was above the 2021 Queensland average of \$40,924 and \$105,248, respectively.

TABLE 5-5 INCOME INDICATORS

ABS Area	Year	Median Total Personal Income (\$)	Median Household Income (\$)	Low Income Families
Cloncurry Shire LGA LGA32450	2021	61,880	120,692	57 (8.3%)
NWMP 315021405 (Mount Isa) 315021406 (Mount Isa Surrounds)	2021	60,360	134,962	366 (7.1%)

5.3.2 BUSINESS HEALTH

Table 5-6 provides an overview of business health with the Social Study Area.

TABLE 5-6 BUSINESS HEALTH INDICATORS

ABS Area	Key Indicators
Cloncurry Shire LGA LGA32450	<p>Business Composition</p> <ul style="list-style-type: none"> Agriculture, Forestry and Fishing industry (29.2%) Construction industry (14.7%) <p>Number of Registered Businesses</p> <ul style="list-style-type: none"> 353 registered businesses <p>Employees</p> <ul style="list-style-type: none"> 75 businesses (21.2%) employed one to four employees <p>Turnover</p> <ul style="list-style-type: none"> Nine businesses (2.5%) with a turnover range of \$10 million or more
NWMP 315021405 (Mount Isa) 315021406 (Mount Isa Surrounds)	<p>Business Composition</p> <ul style="list-style-type: none"> Construction industry (17.5%) Agriculture, Forestry and Fishing industry (11.6%) <p>Number of Registered Businesses</p> <ul style="list-style-type: none"> 1,349 registered businesses <p>Employees</p> <ul style="list-style-type: none"> 363 businesses (26.9%) employed one to four employees <p>Turnover</p> <ul style="list-style-type: none"> 28 businesses (2.1%) with a turnover range of \$10 million or more

5.4 HOUSING AND ACCOMMODATION

There is a low density of housing in the immediate vicinity of the Project with only one dwelling located within 4.9 km of the Micrositing Corridor. Key housing and accommodation indicators across the broader Social Study Area are provided in **Table 5-7**, with the data and supporting resident perspectives identifying:

- The Cloncurry Shire LGA has 1,057 households and 689 families, with 42.2% of total families being couple families with children.
- Most residents within the Cloncurry LGA rent, with a fluctuation of mean rental benchmarks. The cost of housing has moderated, although residents have indicated that they believe costs are excessive for the stock and quality of options.
- The NWMP has 7,476 households and 5,813 families, with 43.7% of total families being couple families with children.

Additionally, rent and property data from the Cloncurry LGA and NWMP denote the following:

- Cloncurry Shire LGA:
 - Two new house sales in the 12 months ending 31 December 2023
 - 12 vacant land sales, with a median vacant land sale price of \$21,418
 - 79 residential dwelling sales in the 12 months ending 31 December 2023
 - Median sale price of \$210,500
 - Median rent of \$300 per week for a two bedroom flat/unit in the 12 months ending 31 March 2024
 - Median rent of \$373 per week for a three bedroom house
- NWMP:
 - Three new house sales in the 12 months ending 31 December 2023
 - 17 vacant land sales
 - The Mount Isa Surrounds SA2 had the highest median vacant land sale price with \$20,418
 - 370 residential dwelling sales in the 12 months ending 31 December 2023
 - The Mount Isa SA2 had the highest median sale price with \$295,000 followed by Mount Isa Surrounds SA2 with \$210,500
 - Median mortgage repayment of \$1,537 per month
 - Median rent of \$290 per week for a two bedroom flat/unit in the 12 months ending 31 March 2024
 - Median rent of \$440 per week for a three bedroom house
 - The Mount Isa SA2 had the highest median rent per week for a three bedroom house (\$450)

TABLE 5-7 KEY HOUSING INDICATORS

ABS Area	Year	Total Households	Families in Households	Families with Children (%)	Average Household Size	Private Dwellings (%)	Dwelling Tenure % (fully owned / purchased / rented / other)	Median Sale Price \$ (Total dwellings)
Cloncurry Shire LGA LGA32450	2021	1,057	689	42.2	2.5	80.2	21.7 / 19.5 / 43.1 / 10.4	210,500
NWMP 315021405 (Mount Isa) 315021406 (Mount Isa Surrounds)	2021	7,476	5,813	43.7	2.6	75.9	17.1 / 28.3 / 45.0 / 4.9	N/A

5.5 SOCIAL INFRASTRUCTURE

This section provides an overview of the social infrastructure present in the Social Study Area, which contributes to the well-being of the local community. The local/regional centres that are likely to provide social infrastructure for the Project are Mount Isa and Cloncurry, due to their size proximity and their connectivity to the Project.

5.5.1 SOCIAL SERVICES

There are a variety of recreational and cultural activities and services available to residents of the Social Study Area. In particular, the capacity and access to local infrastructure, facilities and services within Cloncurry is considered sufficient for local residents.

An aerial desktop analysis of the Social Study Area has identified the following social and recreational services:

- Parks and gardens;
- Sporting fields, swimming pools, fitness centres and golf courses;
- Shopping centres and retail services;
- Museums;
- Post offices;
- Libraries;
- Community Halls;
- Cafes, pubs and restaurants; and
- Churches and Mosques.

5.5.2 HEALTH AND EMERGENCY SERVICES

Public health and emergency services in surrounding towns and regions may support the construction phase of the Project. The closest township, Cloncurry, is likely to provide these services due to its proximity to the Project.

The Cloncurry Hospital is approximately one hour from the Project and provides 24-hour service and mental health services. The Cloncurry Multipurpose Health Service provides rural and remote hospital services, including an inpatient facility, residential aged care facility, an emergency department, and an outpatient department.

The relevant health and emergency services located within the Social Study Area are outlined in **Table 5-8**.

TABLE 5-8 HEALTH AND EMERGENCY SERVICES

ABS Area	Services
Cloncurry Shire LGA LGA32450	Hospitals <ul style="list-style-type: none"> • Cloncurry Hospital and Cloncurry Multipurpose Health Service • Dajarra Health Centre Police Stations <ul style="list-style-type: none"> • Cloncurry Police Station • Dajarra Police Station

ABS Area	Services
	<p>Ambulance Stations</p> <ul style="list-style-type: none"> • Cloncurry Ambulance Station • Dajarra Ambulance Station <p>Fire Station</p> <ul style="list-style-type: none"> • Cloncurry Fire Station
<p>NWMP 315021405 (Mount Isa) 315021406 (Mount Isa Surrounds)</p>	<p>Hospitals</p> <ul style="list-style-type: none"> • Mount Isa Hospital • Leichhardt Medical Centre (Mount Isa) • North and West Remote Health • Camooweal Clinic <p>Police Stations</p> <ul style="list-style-type: none"> • Mount Isa Police Headquarters • Cemooweal Police Station <p>Ambulance Stations</p> <ul style="list-style-type: none"> • Mount Isa Ambulance Station • Lifelight Group – Mount Isa and the North West Region <p>Fire Station</p> <ul style="list-style-type: none"> • Mount Isa Fire Station

5.5.2.1 HEALTH CONDITIONS

There are a variety of health conditions apparent in the Social Study Area, which are useful in establishing an understanding of the sensitivity of the social study area to Project induced changes. In the Cloncurry LGA, the key health conditions affecting local residents include:

- Arthritis (3.8%);
- Asthma (6.9%);
- Cancer (including remission) (1.9%); and
- Dementia (including Alzheimer's (0.4%).

Additionally, those within one or more long-term health conditions comprise:

- 749 persons (20.6% of the population) in the Cloncurry Shire LGA; and
- 4,595 persons (20.5% of the population) in the NWMP.

5.5.3 EDUCATION

Table 5-9 identifies the extent of educational facilities within the Social Study Area.

TABLE 5-9 EDUCATIONAL FACILITIES

Education Type	Cloncurry Shire LGA LGA32450	NWMP 315021405 (Mount Isa) 315021406 (Mount Isa Surrounds)
Family Day Care	0	1
Kindergartens	1	7
Long Day care	1	5

Education Type	Cloncurry Shire LGA LGA32450	NWMP
		315021405 (Mount Isa) 315021406 (Mount Isa Surrounds)
School Aged Care	0	5
Limited Hours Care	0	0
Schools	3	17

Key information relevant to education outcomes within the Social Study Area is as follows:

- Levels of education attainment are lower in the Cloncurry LGA (approximately 49.4% completing Year 11 or 12 or the equivalent) in comparison to the NWMP (55.6%).
- The percentage of people in the Cloncurry LGA with a non-school qualification is 60.0% which closely aligns with the NWMP at 59.6%.
- The most common non-school qualification field of study in Social Study Area was engineering and related technologies, with the Cloncurry LGA at 21.9% and the NWMP at 24.1%.

5.6 TRAVEL AND ACCESS

5.6.1 ACCESS

Primary access to the Project will be via the existing access road which services the DRM (the Dugald River Mine Access Road) via the Burke Developmental Road. Additionally, turbine components and associated infrastructure will be transported by road from the Port of Townsville.

The proposed transport route assessment was prepared by Rex J Andrews Engineered Transportation (2024) and has been provided to the DTMR for assessment. The construction and maintenance of the Project will require the construction of new internal access tracks within the Micrositing Corridor. The tracks will provide ongoing access to the WTGs and other Project infrastructure.

5.6.2 AERODROMES

The Aviation Impact Assessment, prepared by Aviation Projects (2025), identified two uncertified aerodromes within three nautical miles of the Micrositing Corridor, being the Dugald River Aerodrome and Mt Roseby Aerodrome. These aerodromes are used by MMG for the DRM, and by the Immediate Neighbour (McMillian family), respectively.

5.6.3 VEHICLE OWNERSHIP

Table 5-10 summarises the number of motor vehicles per occupied private dwelling across the Social Study Area.

TABLE 5-10 NUMBER OF MOTOR VEHICLES PER PRIVATE DWELLING

ABS Area	No motor vehicles	1 motor vehicle	2 motor vehicles	3 or more motor vehicles
Cloncurry Shire LGA LGA32450	97 (9.2%)	361 (34.2%)	330 (31.2%)	216 (20.4%)
NWMP 315021405 (Mount Isa) 315021406 (Mount Isa Surrounds)	568 (7.6%)	2,458 (32.9%)	2,719 (36.4%)	1,395 (18.7%)

5.6.4 METHOD OF TRAVEL TO WORK

Table 5-11 indicates the method of travel to work across the Social Study Area. Based on the data within the table, it can be observed that most people in the Cloncurry Shire LGA (66.0%) commute to work in the car (driver or passenger), with an even larger proportion electing to do so in the NWMP (85.9%).

TABLE 5-11 METHOD OF TRAVEL TO WORK

ABS Area	Bus	Taxi/Share Service	Car (driver)	Car (passenger)	Truck	Motorbike	Bicycle	Other	Walked	Total
Cloncurry Shire LGA LGA32450	104	7	826	115	30	5	17	84	247	1,425
NWMP 315021405 (Mount Isa)	21	66	6,472	705	50	108	78	45	386	7,930
NWMP 315021406 (Mount Isa Surrounds)	109	7	873	119	31	6	15	96	324	1,576

5.7 COMMUNITY CHARACTERISTICS

The Social Study Area has a long history of pastoral and mining activities, with local communities typically directly or indirectly employed, and/or encouraging, of these types of pursuits.

Previous desktop and engagement undertaken by MMG and Bina Sustainable Solutions Pty Ltd identified that the residents of Cloncurry, within the Social Study Area, describe their community as friendly and close-knit, with strong community and family values. Despite this however, residents also believe that they do not necessarily have all the resources and infrastructure that non-regional communities may enjoy. Residents do have access to local infrastructure, facilities and services, with many engaged in a variety of recreational and cultural community activities and events.

Table 5-12 provides an overview of the key festivals and events occurring within the Social Study Area, focusing on Cloncurry and Mount Isa. The types of events are generally reflective of the core community values and characteristics of the Social Study Area.

TABLE 5-12 SIGNIFICANT FESTIVALS AND EVENTS IN CLONCURRY AND MOUNT ISA

Location	Event / Festival	Date	Details
Cloncurry	Cloncurry & District Historical Society Sunday Markets	Monthly	Monthly markets and stalls at the Cloncurry Mary Kathleen Park, including a BBQ brunch from the local Lions Club.
	Cloncurry and District Races	Multiple times a year	Horsereading events held at the Cloncurry Racecourse throughout the year
	Australia Day	January	A celebration of the hard work and commitment of individuals and community groups throughout the Shire.
	Cloncurry Commerce – Sips and Sliders	May	A networking event connecting local businesses within Cloncurry.
	Rockhana Gem, Mineral and Mining Field Day	July	An interactive day to showcase job opportunities within Cloncurry.
	Stockman’s Challenge	July	An equestrian event which highlights the rural lifestyle of the community.
	Cloncurry Beat the Heat Festival	September	An annual celebration of Cloncurry Shire, includes entertainment, markets and food.
	Remembrance Day	November	A day which honours the men and women who served Australia.
	Christmas Festivities	December	A series of annual events to celebrate Christmas.

Location	Event / Festival	Date	Details
Mount Isa	Australia Day	January	A celebration of the hard work and commitment of individuals and community groups throughout the region.
	Sign on Expo	February	An annual event which connects people with the wide range of sporting, community, and arts clubs in Mount Isa.
	Mount Isa Show	June	An annual festival that has a variety of markets, food and entertainment events.
	Mount Isa Cup Race Day	June	A horseracing and social event.
	Isa Street Festival	August	An annual festival that features music, food and market stalls, a sideshow alley, and parade.
	Mount Isa Mines Rodeo	August	An annual rodeo with various related associated events.
	Mount Isa Motor Show	August	A celebration of cars with related associated events.

5.8 VULNERABLE GROUPS

Vulnerability refers to an individual or groups capacity to adapt to, or cope with changes in their environment and is influenced by a range of different socio-economic factors. Some individuals or groups may be more vulnerable than others due to certain existing socio-economic characteristics including (but not limited to) age, livelihood, language proficiency and health status. Regional towns throughout Queensland are often prone to social, cultural, environmental and economic changes over time.

This section considers four groups across the Social Study Area, with potential social vulnerabilities associated with socio-economic disadvantage, cultural and linguistical diversity, age, and Indigenous peoples.

5.8.1 SOCIO-ECONOMIC DISADVANTAGE

SEIFA is a product developed by the ABS that ranks areas in Australia according to relative socio-economic advantage and disadvantage (ABS, 2021). The indexes are based on information from the five-yearly Census, with SEIFA 2021 based on Census 2021 data. The SEIFA is commonly used to determine areas that require funding and services, identify new business opportunities, and assist research into the relationship between socio-economic disadvantage and various social outcomes. A relative measure of socio-economic disadvantage was first produced by the ABS following the 1971 Census while the SEIFA in its present form was first produced from the 1986 Census data (ABS, 2018).

The Index of Relative Socio-economic Advantage and Disadvantage (IRSAD) used in the SEIFA 2021 is the same as that used for the previous three censuses (2016, 2011 and 2006). IRSAD is a general measure of advantage and disadvantage, summarising the economic and social conditions of people and households. It ranks areas from most disadvantaged to most advantaged. The SEIFA scores are a percentile score, which divides a distribution into 100 equal groups. The lowest scoring 1% of areas are given a percentile number of 1 and the highest 1% of areas are given a percentile number of 100. A score of 50 suggests an area is neither advantaged nor disadvantaged. The ABS broadly defines relative socio-economic advantage in terms of people's access to material and social resources, and their ability to participate in society. This is broadly defined in recognition of the many concepts that have emerged in the literature to describe advantage and disadvantage.

The dimensions included in SEIFA are guided by international research, given the constraints of Census data. The Census does collect information on the key dimensions of income, education, employment, occupation, housing, and some other miscellaneous indicators of advantage and disadvantage; these are the candidate variables used to construct the SEIFA (ABS, 2018).

The latest available SEIFA indicators across the social study area are reported in **Table 5-13**. Cloncurry experiences a greater level of disadvantage than advantage. With respect to the NWMP, there is a greater extent of disadvantage experienced within the Mount Isa Surrounds SA2 than that of the Mount Isa SA2, however both have a greater level of disadvantage than advantage.

TABLE 5-13 SEIFA INDICATORS ACROSS THE SOCIAL STUDY AREA

ABS Area	Census Year	SEIFA Percentile in Queensland
Cloncurry Shire LGA LGA32450	2021	59
NWMP 315021405 (Mount Isa)	2021	40
NWMP 315021406 (Mount Isa Surrounds)	2021	29

5.8.2 CULTURAL AND LINGUISTICAL DIVERSITY

Cultural and linguistical diversity (CALD) is a broad term used to describe communities with diverse languages, ethnic backgrounds, nationalities, traditions, societal structures, and religions, because of this CALD groups are often considered vulnerable people.

Table 5-14 indicates the number of persons born overseas and persons speaking a language other than English at home across the Social Study Area. Additionally, the following is apparent within the Social Study Area:

- Cloncurry Shire LGA:
 - The top five non-English speaking languages for the total population were Indo Aryan languages (0.7%), Southeast Asian Austronesian languages (0.6%), Chinese languages (0.5%), Australian Indigenous languages (0.5%), and German (0.2%).

- The top five non-English speaking backgrounds for the total population were Philippines (0.7%), India (0.5%), China excluding SARs and Taiwan (0.4%), Sri Lanka (0.3%) and Malaysia (0.2%).
- NWMP:
 - The top five non-English speaking languages for the total population were Southeast Asian Austronesian languages (2.0%), Indo Aryan languages (0.9%), Afrikaans (0.6%), Australian Indigenous languages (0.6%), Chinese languages (0.4%).
 - The top five non-English speaking backgrounds for the total population were Philippines (2.3%), India (0.8%), Fiji (0.5%), Papua New Guinea (0.5%), and Zimbabwe (0.4%).

TABLE 5-14 COUNTRY OF BIRTH AND LANGUAGE

ABS Area	Persons Born Overseas	Persons Speaking a Language other than English at Home
Cloncurry Shire LGA LGA32450	309 (8.5%)	162 (4.4%)
NWMP 315021405 (Mount Isa) 315021406 (Mount Isa Surrounds)	3,359 (15.0%)	2,904 (9.4%)

By comparison, in Queensland, 19.4% of residents at the time of the 2021 Census said they used a language other than English at home (Department of Women, Aboriginal and Torres Strait Islander Partnerships and Multiculturalism, 2025). Based on this, the likelihood of CALD groups being excluded from engagement activities due to language barriers is deemed to be low.

5.8.3 YOUTH AND ELDERLY

Youth and elderly populations are particularly vulnerable to the impacts of large development projects due to their specific mobility, health, safety, and social needs. During the construction, operation and decommissioning phases, the Project impacts that have potential to exacerbate the needs of youth and elderly groups are concentrated to the immediate surroundings of the Project Area.

As of June 2023, the Cloncurry Shire LGA recorded 135 recipients of the age pension, supported by ten operational aged care places and three aged care services. **Table 5-15** summarises the estimated resident population in the upper and lower demographics. According to the data, the estimated resident population aged 65 and above is for the Social Study Area is below the state average of 17%. Additionally, the estimated resident population aged 14 and below for the Social Study Area is above the state average of 18.4%.

TABLE 5-15 ESTIMATED RESIDENT POPULATION BY AGE

ABS Area	Estimated Resident Population Aged 65 and above (%)	Estimated Resident Population Aged 14 and below (%)
Cloncurry Shire LGA LGA32450	10.7	19.5
NWMP 315021405 (Mount Isa)	8.1	23.8
NWMP 315021406 (Mount Isa Surrounds)	10.6	19.3

The Australian Early Development Census outcomes for the Social Study Area indicate a level of developmentally vulnerable children, with the following data provided:

- Cloncurry Shire LGA:
 - 18.9% developmentally vulnerable children in one or more domains in 2021
 - 11.3% developmentally vulnerable children in two or more domains in 2021
 - The emotional maturity domain had the largest percentage of developmentally vulnerable children (13.2%)
- NWMP:
 - 32.8% developmentally vulnerable children in one or more domains in 2021
 - 18.6% developmentally vulnerable children in two or more domains in 2021
 - The language and cognitive domain had the largest percentage of developmentally vulnerable children (21.4%)
 - The Mount Isa Surrounds SA2 had the largest percentage of developmentally vulnerable children in two or more domains (24.3%)

5.8.4 INDIGENOUS PEOPLES

Aboriginal populations and communities are culturally vulnerable to the Project impacts that may affect tangible and intangible heritage, particularly given past practices and government policies that may have created detachment from traditional lands.

The Kalkadoon People are the Native Title holders of the Micrositing Corridor (pursuant to Native Title determination QUD579/2005 Kalkadoon People #4 (QCD2011/007) as determined by the Federal Court of Australia on 12 December 2011). Within the broader Social Study Area there are a variety of traditional Kalkadoon lands, rich in cultural heritage and with deep connections to Country.

Table 5-16 provides data on Aboriginal and Torres Strait Islander population statistics for the Social Study Area.

TABLE 5-16 ABORIGINAL AND TORRES STRAIT ISLANDER POPULATION

ABS Area	Census Year	Population	Percentage of the Total Population
Cloncurry Shire LGA LGA32450	2021	868	23.8%
NWMP 315021405 (Mount Isa) 315021406 (Mount Isa Surrounds)	2021	4,886	21.9%

6. COMMUNITY AND STAKEHOLDER ENGAGEMENT

This section summarises the community and stakeholder engagement activities relevant to the SIA that have been undertaken for the Project. Stakeholder engagement for the Project has been occurring since February 2024 and will be an ongoing process through the construction and operation phases.

6.1 STAKEHOLDER ENGAGEMENT APPROACH

MMG has expressed their desire to be a trusted member of the communities that host its projects and operations, inclusive of the Project. In order to develop and maintain this trust, the organisation has affirmed its commitment to being an open and transparent, and showing respect for diversity and gender, when engaging in decision-making processes that will affect current and future generations. To this end, stakeholder engagement for the Project was conducted with the intent to appropriately acknowledge and consider the suggestions, feedback and issues that matter to the Project stakeholders.

All stakeholder engagement was conducted in alignment with the MMG Limited's Standard for Social Performance and the Community and Social Performance Work Quality Requirement for the DRM, and commensurate with the requirements of the Stakeholder Management Plan (SMP) for DRM. The SMP was prepared in alignment with International Council on Mining and Metals (ICMM) principles and the International Association for Public Participation Australasia (IAP2) Spectrum and includes tailored communications methods and tools relevant for engaging different stakeholders and encouraging collaboration. The SMP also includes stakeholder grievance management processes, with all stakeholder engagement activities captured in Borealis stakeholder engagement software.

Stakeholder engagement for the Project commenced in February 2024 and will remain ongoing throughout the life of the Project. This involves engagement with the Host Landholder/Leaseholders, Immediate Neighbours, Aboriginal Groups, Local Government, State/Federal Government, and the Broader Community. A summary of these stakeholder engagement activities is provided in **Section 6.2**, and within the Stakeholder Engagement Report, submitted with the Development Application.

6.2 SUMMARY OF STAKEHOLDER ENGAGEMENT ACTIVITIES RELEVANT TO THE PROJECT

6.2.1 STATE/FEDERAL GOVERNMENT

A Pre-lodgement meeting for the Project was held with the DSDIP on 19 November 2024. The purpose of the meeting was to introduce the Project, discuss the unique Project attributes (particularly micro-siting, geotechnical requirements and tenure), confirm technical study requirements and confirm approval requirements.

Other State/Federal Government engagements included the following:

- **June 2025** – Engagement with the Bureau of Meteorology in relation to electromagnetic interference considerations;
- **May 2025** – Owner's Consent sought/received from the Department of Natural Resources and Mines, Manufacturing and Regional and Rural Development;

- December 2024 to Early 2025 - Engagement with the Department of Natural Resources and Mines, Manufacturing and Regional and Rural Development in relation to the Relevant Purpose Determination;
- November 2024 – Regulator Briefing with the Department of Climate Change, Energy, the Environment and Water; AND
- May 2024 - Engagement with the Department of Natural Resources and Mines, Manufacturing and Regional and Rural Development in relation to the subdivision over part of the Mt Roseby Station.

6.2.2 HOST LEASEHOLDER / IMMEDIATE NEIGHBOURS

The McMillan Family holds property rights (pastoral lease) over a large portion of the Micrositing Corridor (the Mt Roseby Station) and has a homestead located within 4.9 km of a potential turbine location. Project specific engagement included the following:

- 7 February 2024 – initial meeting and introduction to the Project;
- 4 March 2024 – early negotiations and discussions relating to the Project;
- 24 August 2024 – negotiations and discussions relating to the Project;
- 11 September 2024 – informal catchup and discussions on the Project;
- 20 November 2024 – finalisation and signing of a tenure agreement which includes compensation;
- 19 March 2025 – Project update and presentation of visuals; and
- March to April 2025 – engagement for access and in respect of the tenure agreement.

6.2.3 LOCAL GOVERNMENT

MMG has had regular engagement with the Cloncurry Shire Council. The primary purpose of this engagement has been to review the Project in consideration of regional development strategies and to ensure alignment with long-term visions for the region. Engagement has included the following:

- 6 June 2024 – Engagement with Cloncurry Shire Council in relation to the subdivision over part of the Mt Roseby Station;
- 20 July 2024 – Engagement with Cloncurry Shire Council’s Chief Executive Officer and Mayor regarding the Project and proposed subdivision over part of the Mt Roseby Station;
- 12 September 2024 – Collaboration with Cloncurry Shire Council and presentation of the Project to the Meeting of the Mines Forum held in the Cloncurry. A comprehensive question and answer session was held with representatives of the Broader Community and the resources sector;
- December 2024 – Engagement with Cloncurry Shire Council as part of the Exemption Application relating to the temporary construction and operation of Met Masts for the Project; and
- 26 March 2025 – Provided a comprehensive Project update to Cloncurry Shire Council as well as the Mount Isa City Council, McKinlay Shire Council, Richmond Shire Council and Flinders Shire Council.

MMG and Cloncurry Shire Council have a long-term partnership which has advanced the region and ensured benefits are spread to the broader community.

6.2.4 ABORIGINAL GROUPS

MMG and the Kalkadoon People have been engaging in relation to the Project since July 2024, culminating in an ILUA for the Project, signed by both parties on 29 November 2024 and registered on 14 April 2025 (refer to **Appendix A**). A summary of engagement with the Kalkadoon People specific to the Project includes:

- 8 July 2024 – Informal engagement during National Aboriginal and Islanders Day Observance Committee (NAIDOC) Week celebrations;
- 21 October 2024 – Discussions during cultural heritage walker coordination;
- 2 September 2024 – Further discussions during cultural heritage walker coordination;
- 13 November 2024 – Engagement during the Mount Isa Jobs Fair; and
- 24 November 2024 – Signing of the ILUA.

6.2.5 BROADER COMMUNITY

MMG has identified its commitment to building strong, transparent, and collaborative relationships with the broader community and industry stakeholders. Engagement specific to the Project has included:

- February 2025 – Public Comment on the *Environmental Protection and Biodiversity Conservation Act 1999* Referral;
- June/July 2024 – Public Notification of the Project’s Environmental Authority amendment, open for response on MMG website and in MMG Cloncurry Community Office. No responses were received; and
- 12 September 2024 – Presentation of the Project at the Meeting of the Mines Forum in Cloncurry, offering an overview of the Project and inviting questions from the local mining sector and associated stakeholders.

6.3 OTHER RELEVANT STAKEHOLDER ENGAGEMENT

6.3.1 MMG DUGALD RIVER PERCEPTION SURVEY

The MMG Dugald River Perception Survey was undertaken by Bina Sustainable Solutions in 2024. The intent of the perception survey was to ascertain stakeholder perspectives and insights towards MMG and the DRM. The perception survey included a broad range of anonymous stakeholders, including 76 participants from Cloncurry and Mount Isa (the majority of which reside in Cloncurry), two participants from Melbourne and one from Kajibbi.

The topical areas explored within the perception survey included:

- Social Impacts and Opportunities;
- Comparative Analysis;
- Performance Analysis; and
- Suggestions and/or feedback.

Key findings from the survey help to shape MMG’s community programs and investment initiatives (refer to **Section 7.1**) and assist the organisation in maintain an ongoing ‘Social Licence to Operate’ within the Broader Community.

The outcomes from the 2024 perception survey have helped to shape considerations associated with the Project – in particular the nature/type of stakeholder engagement conducted.

7. IMPACT ASSESSMENT

As outlined in **Section 3.3**, social impacts were predicted and evaluated in accordance with an impact assessment process that took into consideration:

- The characteristics of the Project, including the timing, duration and intensity of the proposed construction and operational activities;
- The issues raised by the stakeholders during the period of community and stakeholder engagement conducted by MMG between July 2024 and June 2025; and
- The outcomes of the technical studies undertaken for the Project.

The impacts have been assessed based on the likelihood of the impact occurring, the magnitude of the impact (degree of change caused by the impact) if it occurs, and the vulnerability of the impacted receptors (refer to **Section 3.3**).

Following completion of the Project's operational timeframe the WTGs and other above ground infrastructure will be decommissioned and removed, with the area rehabilitated in accordance with the regulatory framework applicable at the time, and pursuant to the landowner tenure agreement. Given the timeframe involved, the decommissioning phase has not been specifically assessed in this SIA, however it is anticipated that the potential social impacts will be similar to those of the construction phase. It is noted that these potential social impacts will be considered as part of a future Rehabilitation and Decommissioning Plan.

7.1 EXISTING COMMUNITY PROGRAMS AND INVESTMENT

Through MMG Limited, MMG currently implements a range of community programs which provide avenues to provide direct and indirect support to stakeholders within the Social Study Area. It is intended that MMG will coordinate with, and contribute to, these existing programs as an outcome of the Project.

MMG Limited's community investment in both Australia, and internationally, is aligned with the Sustainable Development Goals (SDG) 1-6 as outlined below:

- **SDG 1 No Poverty** – MMG Limited helps to build secure incomes by focusing on training and local employment and strengthening local business capabilities to supply goods and services to existing and new markets.
- **SDG 2 Zero Hunger** – MMG Limited works with communities, governments and partners to ensure food security in local communities.
- **SDG 3 Good Health and well-being** – MMG Limited helps establish and strengthen health and wellbeing programs for local communities, including the provision of scholarships.
- **SDG 4 Quality Education** – MMG Limited works with governments and communities to improve access to quality education.
- **SDG 5 Gender Equality** – MMG Limited supports programs that provide women and girls with equal access to education, health care, decent work, and representation in political and economic decision-making processes will fuel sustainable economies and benefit societies and humanity at large.
- **SDG 6 Clean Water and Sanitation** – MMG Limited works with communities, governments and partners to ensure local communities have access to clean water and sanitation.

The following section provides an overview of specific programs and community investment initiatives as relevant to the key stakeholders identified in **Section 4.3**.

7.1.1 HOST LEASEHOLDER / IMMEDIATE NEIGHBOURS

MMG provides regular support to the McMillan family as part of the DRM, including:

- Assistance with road upgrades and maintenance on McMillan property;
- Support for fencing works;
- Sponsorship of McMillan family-run community events; and
- Bushfire response support, including on-ground assistance and coordination.

7.1.2 LOCAL GOVERNMENT

MMG maintains regular communication with Cloncurry Shire Council to support Broader Community development and infrastructure goals. This includes:

- Regular meetings and liaison with Cloncurry Shire Council representatives to provide updates on mining operations at the DRM and address regional concerns;
- Sponsorship of local events and initiatives, reinforcing MMG's commitment to social investment and regional vibrancy;
- Active participation in community events coordinated or supported by a broad range of Local Governments across the wider region (external to the Social Study Area);
- Assistance on projects led by Cloncurry Shire Council, including infrastructure improvements, planning support, and logistical coordination;
- Provision of ongoing support from the DRM, including coordination on services, emergency response, and environmental matters; and
- Development and implementation of Road User Agreements to collaboratively manage traffic impacts, road maintenance, and safety associated with both the Project and broader mining activities.

7.1.3 ABORIGINAL GROUPS

MMG works closely with the Kalkadoon People across a range of areas to foster genuine partnerships and long-term benefits, including:

- Support for apprenticeship and traineeship programs, creating meaningful employment pathways for young Indigenous people;
- Sponsorship of Kalkadoon-led events and initiatives;
- Assistance with NAIDOC Week activities, including funding, participation, and logistical support across local events;
- Cultural heritage survey works across the DRM, undertaken in partnership with Kalkadoon representatives to ensure respect for cultural values, sites, and protocols; and
- Ongoing engagement with the KNTAC to support governance, planning, and partnership alignment.

7.1.4 BROADER COMMUNITY

MMG has a long history of providing direct and indirect support to the community within the Social Study Area, including residents of Kajabbi, Cloncurry, and Mount Isa. This includes support for:

- Industry partnerships with regional and peak bodies such as the Mount Isa to Townsville Economic Zone (MITEZ) and Queensland Resources Council;
- Local not-for-profit organisations, including financial sponsorships, in-kind support, and assistance with events and fundraising activities;
- Community sporting groups, including sponsorship of local teams, provision of equipment, and volunteer participation;
- Regional education initiatives, including sponsorship and engagement with local schools, Science, Technology, Engineering and Mathematics (STEM) engagement activities and career pathway promotion; and collaboration with tertiary education and training providers to support regional skills development; and
- Regional capacity-building initiatives, including education, training opportunities, and local employment readiness schemes, local business capacity building.

7.2 KEY IMPACTS AND MANAGEMENT MEASURES

Several key social impacts were identified through the assessment process, which are presented in **Table 7-1**. These impacts were also reflected during stakeholder engagement, as well as understood based on experience with wind farms in Queensland (refer to **Section 6** for additional information related to stakeholder engagement).

TABLE 7-1 SOCIAL IMPACTS AND MANAGEMENT MEASURES

Key Matter	Impact Description	Affected Stakeholders	Project Phase		Pre-Mitigation / Enhancement			Management Measures	Post-Mitigation / Enhancement		
			C	O	Magnitude	Likelihood	Significance		Magnitude	Likelihood	Significance
Community and Stakeholder Engagement	<p>Reduced community cohesion through divided opinions about the desirability of the Project or the Proponent; and increased social tensions if appropriate management and/or mitigations are not implemented by the Proponent for construction activities. Both of these aspects have the potential to negatively impact community health and well-being.</p> <p>The outcomes of the stakeholder engagement undertaken (refer to Section 6) did not identify areas of potential division between stakeholders or receptors associated with the Project.</p> <p>Furthermore, a March 2024 Stakeholder Perception Survey of 79 community stakeholders (the majority of which were from Cloncurry, with some also from Mount Isa, Kajabbi, and Melbourne), conducted by Bina Sustainable Solutions for the MMG DRM, indicates that community perception of the Proponent is largely positive (88%). The Proponent is recognised by the local community as having a strong commitment to community events and support programs/initiatives (reflected in the initiatives identified in Section 7.1).</p>	<ul style="list-style-type: none"> • Host Landowner/ Leaseholder • Immediate Neighbours • Aboriginal Groups • Broader Community • Commercial Businesses and Organisations 	✓	✓	Medium	Low	Minor	<ul style="list-style-type: none"> • Implement MMG’s stakeholder grievance mechanism to ensure that concern/complaints received in relation to the Project are identified and acted upon. • Continue to implement the SMP for the DRM, with the Proponent committed to undertaking ongoing community engagement throughout the life of the Project. • MMG to coordinate with, and contribute to, the existing community programs and investment initiatives for DRM. 	Small	Low	Negligible
	<p>Community engagement for the Project is ineffective with stakeholders and/or receptors feeling as though they have not been heard or unable to influence Project decisions and management measures.</p> <p>The Proponent has undertaken targeted engagement with key identified stakeholders (refer to Section 6) in accordance with its existing SMP for the DRM.</p> <p>The March 2024 Stakeholder Perception Survey of 79 community stakeholders (the majority of which were from Cloncurry, with some also from Mount Isa, Kajabbi, and Melbourne), conducted by Bina Sustainable Solutions for MMG, indicate that the majority (75%) of respondents believe that communications between MMG Limited</p>		<ul style="list-style-type: none"> • Host Landowner/ Leaseholder • Immediate Neighbours • Aboriginal Groups • Broader Community • Commercial Businesses and Organisations 	✓	✓	Medium	Low		Minor	<ul style="list-style-type: none"> • Implement MMG’s stakeholder grievance mechanism to ensure that concern/complaints received in relation to the Project are identified and acted upon. • Continue to implement the SMP for the DRM, with the Proponent committed to undertaking ongoing community engagement throughout the life of the Project. 	Small

Key Matter	Impact Description	Affected Stakeholders	Project Phase		Pre-Mitigation / Enhancement			Management Measures	Post-Mitigation / Enhancement		
			C	O	Magnitude	Likelihood	Significance		Magnitude	Likelihood	Significance
	and the community are open, honest, and easily accessible.										
Workforce Management	<p>Increased demand for labour creates direct and indirect employment opportunities for the local community within the Social Study Area.</p> <p>The Project is expected to have a two-year construction timeframe and at its peak, generate 100 FTE jobs. Additionally, during its operation phase, the Project is expected to have variably sized maintenance crews which will range from small teams of three to five people for regular maintenance and between 15-20 during major refurbishments and uplift.</p>	<ul style="list-style-type: none"> Broader Community Commercial Businesses and Organisations Aboriginal Groups 	✓	✓	Positive	Positive	Positive	<ul style="list-style-type: none"> Update MMG’s Local Employment Management Plan (LEMP) for DRM to incorporate the Project and implement. MMG to hold community information sessions with the local communities of Cloncurry and Mount Isa to inform prospective employees and/or business as to expectations for jobs, and to create better awareness into how workers may be able to get involved with the Project. Work with the Contractor appointed for the construction phase of the Project to maximise local employment through provision of local employment targets. MMG to continue support for apprenticeship and traineeship programs with the Kalkadoon People in order to create meaningful employment pathways for young Indigenous people. MMG to continue support for regional capacity-building initiatives, including local employment readiness schemes and local business capacity building within the broader communities of Cloncurry and Mount Isa. 	Positive	Positive	Positive
	<p>Community concerns about the behaviour of non-local workforce. This includes safety concerns (e.g. perceived increase in violence, crime, and alcoholism) and community friction due to the influx of temporary out of town workers in Cloncurry.</p> <p>Non-local workers during the construction phase of the Project will be housed at the DRM Accommodation Camp, located approximately one hour from the township of Cloncurry. Accordingly, there will be limited contact between the non-local workforce and local communities, with the exception of days off during shifts.</p>	<ul style="list-style-type: none"> Broader Community Commercial Businesses and Organisations 	✓		Medium	Low	Minor	<ul style="list-style-type: none"> Implement the existing MMG Code of Conduct and extend it to the Project workforce. Implement the existing MMG Drug, Alcohol and Hygiene Management Plan and extend it to the Project workforce. Require the Project workforce to undertake an relevant MMG inductions. Implement MMG’s stakeholder grievance mechanism to ensure that concern/complaints received 	Small	Low	Negligible

Key Matter	Impact Description	Affected Stakeholders	Project Phase		Pre-Mitigation / Enhancement			Management Measures	Post-Mitigation / Enhancement		
			C	O	Magnitude	Likelihood	Significance		Magnitude	Likelihood	Significance
	<p>Cumulative Impact Considerations: There is the potential that cumulative impacts arising from other projects within the Social Study Area (refer to Section 4.5) may exacerbate the local community concern towards non-local workforces. If safety concerns arise with non-local workforce associated with other projects, these incidents could also contribute to a broader negative perception towards the Project.</p>							in relation to the Project are identified and acted upon.			
	<p>Increased demand for labour contributes to skills shortages within the Social Study Area, which would be more pronounced in Cloncurry comparative to Mount Isa.</p> <p>As denoted in the economic profile (refer to Section 5.3) there is a portion of the Social Study Area residents have relevant occupations and industries to those required for the construction phase of the Project (i.e. Technicians and Trades Workers, Labourers, and Machinery Operators and Drivers). This crossover of relevant skillsets increases the possibility that workers may decide to leave their current employer and accept an opportunity with the Project for the duration of the construction phase. Where this occurs, the Broader Community and/or Commercial Businesses and Organisations may be negatively impacted as they are unable to hire and/or retain suitable staff.</p> <p>The Project is anticipated to create 100 FTE jobs at its peak, which is a relatively small construction workforce compared to other projects and mining operations (including MMG DRM) within the Social Study Area. In addition, the population growth in the Cloncurry LGA and NWMP (refer to Section 5.2) may help to offset the potential risk by providing additional workers to fill positions made available as a result of the Project.</p> <p>Cumulative Impact Considerations: In the event that other projects within the Social Study Area eventuate and/or overlap with the timeframe for construction of the Project (refer to Section 4.5) there is the potential that the impact of any skill shortages</p>	<ul style="list-style-type: none"> • Broader Community • Commercial Businesses and Organisations 	✓		Medium	Medium	Moderate	<ul style="list-style-type: none"> • MMG to monitor skills shortages within the Social Study Area and take this into consideration with contractor recruitment objectives. • Implement MMG's stakeholder grievance mechanism to ensure that concern/complaints received in relation to the Project are identified and acted upon. • Continue to implement the SMP for the DRM, with the Proponent committed to undertaking ongoing community engagement throughout the life of the Project. 	Medium	Low	Minor

Key Matter	Impact Description	Affected Stakeholders	Project Phase		Pre-Mitigation / Enhancement			Management Measures	Post-Mitigation / Enhancement		
			C	O	Magnitude	Likelihood	Significance		Magnitude	Likelihood	Significance
	may be exacerbated, with competition for workers with the same skillsets having the potential to disrupt local business operations.										
Housing and Accommodation	<p>Increase in the demand for accommodation within the Social Study Area to support the construction phase workforce.</p> <p>MMG anticipates that the construction workforce will be housed within the DRM Accommodation Camp, located within the DRM and approximately one hour from Cloncurry. In the event that there are insufficient rooms available at the DRM Accommodation Camp (owing to peak Project workforce overlapping with seasonal and/or project-related peaks in the DRM workforce), Project workers will need to be housed within the Social Study Area, in Cloncurry.</p> <p>Cumulative Impact Considerations: In the event that the other large-scale projects within the Social Study Area eventuate (refer to Section 4.5) and seek accommodation opportunities within Cloncurry, there is a potential that cumulative impacts may be experienced by stakeholders. This impact would only be experienced however, if there are insufficient rooms are available for the Project workforce at the DRM Accommodation Camp.</p>	<ul style="list-style-type: none"> • Broader Community • Commercial Businesses and Organisations 	✓		Large	Low	Moderate	<ul style="list-style-type: none"> • MMG to monitor the available capacity of the DRM Accommodation Camp in order to ensure the majority of the construction phase workforce can be suitably accommodated. • In the event that the DRM Accommodation Camp is unable to accommodate all construction phase employees, MMG are to develop and implement a Workforce Accommodation Strategy to manage the impacts on accommodation providers and local community within Cloncurry. 	Medium	Low	Minor
	<p>Increase in demand for health and emergency services based on the temporary increase in local population due to the construction phase workforce.</p> <p>Section 5.5 outlines the various social infrastructure within the Social Study Area, including the health and emergency services available. There are known pressures and challenges for regional centres and communities across Queensland in attracting and retaining medical workers. The influx of workers during the construction phase has the potential to place additional strain on these health services and potentially reduce accessibility for members of the Broader Community within Cloncurry.</p>	<ul style="list-style-type: none"> • Broader Community • Emergency Services • Local Government • State/Federal Government 	✓		Large	Low	Moderate	<ul style="list-style-type: none"> • Continue to implement the SMP for the DRM, with the Proponent committed to undertaking ongoing community engagement throughout the life of the Project, including with Cloncurry Shire Council and relevant health (e.g. hospitals, medical clinics, etc.) and emergency services (e.g. ambulance, police, etc.). • Implement MMG's stakeholder grievance mechanism to ensure that concern/complaints received in relation to the Project are identified and acted upon. 	Medium	Low	Minor

Key Matter	Impact Description	Affected Stakeholders	Project Phase		Pre-Mitigation / Enhancement			Management Measures	Post-Mitigation / Enhancement		
			C	O	Magnitude	Likelihood	Significance		Magnitude	Likelihood	Significance
	<p>MMG anticipates that the construction phase workforce will be housed at the DRM Accommodation Camp. The DRM Accommodation Camp includes its own medical facilities, which will be made available to the Project workforce.</p> <p><i>Note: Given that most workers will be employed for a temporary period, with most housed in the DRM Accommodation Camp, the Project is unlikely to lead to a long-term increase in families moving to the Social Study Area. Accordingly, pressures associated with schools and childcare, and recreational facilities, have not been considered.</i></p> <p>Cumulative Impact Considerations: Dependent upon the construction timeframes for the projects identified in Section 4.5, there is the potential that the combined influx of workers will place even further strain health and emergency services, and potentially reduce accessibility for members of the Broader Community.</p>										
Local Business and Industry Procurement	<p>Increased potential to secure the long-term operational future of the DRM. If the DRM is able to continue to operate in the long term, Commercial Businesses and Organisations, and the Broader Community within the Social Study Area may benefit from sustained economic activity.</p> <p>Energy is one of the highest operating costs for operations at the DRM and is subject to pricing variability and reliability concerns. The Project will help to reduce operational costs and stabilise price volatility at the DRM. Furthermore, the Project is considered by MMG to be crucial to drive progress against State and Federal Government decarbonisation objectives.</p> <p>Cumulative Impact Considerations: In addition to supporting the DRM, the Project has the potential to support other new/existing mines within the Social Study Area. These mining operations collectively deliver positive impacts to the local community and the broader region, including further economic growth, job creation and infrastructure development.</p>	<ul style="list-style-type: none"> • Immediate Neighbours • Broader Community • Commercial Businesses and Organisations 	✓	✓	Positive	Positive	Positive	<ul style="list-style-type: none"> • Implement MMG’s Local Supply Management Plan for the DRM, as applicable to the Project. • Implement MMG’s Local Procurement Process and make use of the Local Content Database • MMG to continue support for regional capacity-building initiatives, including local business capacity building within the broader communities of Cloncurry and Mount Isa. 	Positive	Positive	Positive

Key Matter	Impact Description	Affected Stakeholders	Project Phase		Pre-Mitigation / Enhancement			Management Measures	Post-Mitigation / Enhancement		
			C	O	Magnitude	Likelihood	Significance		Magnitude	Likelihood	Significance
	<p>Increased demand for goods and services helps to stimulate the local economies through greater indirect spend. Businesses within the Project Social Study Area may benefit from increased economic activity associated with the construction phase workforce, and the spend on materials and equipment.</p> <p>The Project, particularly during the construction phase, will increase the demand for goods and services, warehousing/storage, transport and logistics, and administrative support. Where possible the Proponent intends to meet these demands through local/regional Commercial Businesses and Organisations.</p>	<ul style="list-style-type: none"> Commercial Businesses and Organisations Aboriginal Groups Broader Community 	✓	✓	Positive	Positive	Positive	<ul style="list-style-type: none"> Implement MMG’s Local Supply Management Plan for the DRM, as applicable to the Project. Implement MMG’s Local Procurement Process and make use of the Local Content Database MMG to hold community information sessions with the local communities of Cloncurry and Mount Isa to inform prospective businesses as to expectations for supply opportunities. Work with the Contractor appointed for the construction phase of the Project to maximise spend through provision of local supplier targets. MMG to continue support for regional capacity-building initiatives, including local business capacity building within the broader communities of Cloncurry and Mount Isa. 	Positive	Positive	Positive
	<p>Increased demand for goods and services creates shortages within local communities. The increased demand for goods and services due to the Project leads to local supply shortages and price increases which may affect the ability of the Broader Community within the Project Social Study Area to access and/or procure necessary goods and/or services. It is anticipated that potential shortages will be more pronounced within Cloncurry.</p> <p>Cumulative Impact Considerations: Dependent upon the construction timeframes for the projects identified in Section 4.54.5, there is the potential that local supply shortages might be exacerbated and the prices for goods and services increased, placing additional pressure on local businesses within the Social Study Area.</p>	<ul style="list-style-type: none"> Broader Community Aboriginal Groups 	✓		Medium	Low	Minor	<ul style="list-style-type: none"> Implement MMG’s Local Supply Management Plan for the DRM, as applicable to the Project. Implement MMG’s Local Procurement Process and make use of the Local Content Database Continue to implement the SMP for the DRM, with the Proponent committed to undertaking ongoing community engagement throughout the life of the Project. Implement MMG’s stakeholder grievance mechanism to ensure that concern/complaints received in relation to the Project are identified and acted upon. 	Small	Low	Negligible

Key Matter	Impact Description	Affected Stakeholders	Project Phase		Pre-Mitigation / Enhancement			Management Measures	Post-Mitigation / Enhancement		
			C	O	Magnitude	Likelihood	Significance		Magnitude	Likelihood	Significance
Health and Community Well-being	<p>Transportation of materials and equipment to the Micrositing Corridor has the potential to cause traffic safety concerns for road users along the haulage routes. This includes the risk of an accident causing injury, or in the worst case, a fatality, resulting from increased vehicle movements during the transportation of goods and workers to and from the Project Area.</p> <p>While the majority of the proposed transport route will be via State/National highways, and therefore scoped out of this assessment (refer to Section 4.1), there are sections within Cloncurry (e.g. Hensley Drive, Burke-Developmental Road, etc.) that will see an increase in traffic volumes during the construction phase.</p> <p>The increase in the volume of daily traffic from both larger vehicles (i.e. B-Doubles) or commuter traffic from Cloncurry, may result in compromised emergency response times, a higher potential for unsafe driving to occur, and/or the deterioration of road surface conditions – the latter two aspects that have the potential to increase the risk of a traffic accident.</p> <p>Cumulative Impact Considerations: The CopperString Project, located within the Social Study Area, as well as the four large-scale projects located outside the Social Study Area (refer to Section 4.5) may contribute to cumulative impacts to traffic safety concerns for road users along the haulage routes for the Project.</p>	<ul style="list-style-type: none"> Host Landowner/ Leaseholder Immediate Neighbours Broader Community Commercial Businesses and Organisations 	✓		Large	Medium	Major	<ul style="list-style-type: none"> Develop and implement a Traffic Management Plan for the Project. MMG to obtain the relevant permits from the National Heavy Vehicle Regulator and adhere to permit requirements during vehicle operation. Continue to implement the SMP for the DRM, with the Proponent committed to undertaking ongoing community engagement throughout the life of the Project. Implement MMG’s stakeholder grievance mechanism to ensure that concern/complaints received in relation to the Project are identified and acted upon. 	Large	Low	Moderate
	<p>Daily life impacts, such as potential disruptions to school buses, mail deliveries, utilities, etc. arising from increased construction traffic and local road upgrades. Increased congestion (particularly if work occurs during peak hour times) may lead to frustration by road users and the requirement for more frequent repairs.</p> <p>The proposed transport route options to/from the Micrositing Corridor indicate that larger vehicles carrying equipment/materials will take Andrew Daniels Drive to get onto Burke-Developmental Road and therefore bypass the township of Cloncurry. If this route is used, the potential for</p>		<ul style="list-style-type: none"> Host Landowner/ Leaseholder Immediate Neighbours Broader Community Commercial Businesses and Organisations 	✓		Small	Medium		Minor	<ul style="list-style-type: none"> The DRM Accommodation Camp is to be used to accommodate the construction phase workforce for the Project. Develop and implement a Traffic Management Plan for the Project. Continue to implement the SMP for the DRM, with the Proponent committed to undertaking ongoing community engagement throughout the life of the Project. Implement MMG’s stakeholder grievance 	Small

Key Matter	Impact Description	Affected	Project Phase		Pre-Mitigation / Enhancement			Management Measures	Post-Mitigation / Enhancement		
		Stakeholders	C	O	Magnitude	Likelihood	Significance		Magnitude	Likelihood	Significance
	substantive disruptions to traffic patterns in and around the township of Cloncurry will be limited to light vehicles associated with supply deliveries and/or workers not housed within the DRM Accommodation Camp.							mechanism to ensure that concern/complaints received in relation to the Project are identified and acted upon.			
	<p>Perceived incompatibility of Project with existing land uses that may disrupt and/or prevent existing mining or agricultural operations.</p> <p>The Project has one leaseholder (McMillan family, Mt Roseby Station) and one landowner within the Micrositing Corridor (the State of Queensland). In addition, MMG operates the DRM adjacent to the Micrositing Corridor. Targeted consultation with the State/Federal Government, and Immediate Neighbours, has occurred as part of the Project (refer to Section 6) to address issues/concerns, and will be ongoing throughout the life of the Project.</p> <p>The Agricultural Land Assessment conducted by ERM in the Development Application identified no potential impacts due to the absence of any high-quality agricultural and values within the Micrositing Corridor. This is principally due to existing cessation of cattle grazing operations in the area as a function of the sub-lease held by MMG for existing mining operations.</p> <p>Mining operations are also not anticipated to be impacted by the Project, with the Project designed to be co-located with DRM infrastructure.</p> <p>With respect to the Mt Roseby (uncertified) Aerodrome, used by the McMillan family, and the Dugald River (uncertified) Aerodrome, used by MMG for the DRM, the Aviation Impact Assessment, prepared by Aviation Projects (2025), concluded that the WTGs will not impact circuit operations however may have wake turbulence impacts, leading to a change in the airfield circuit direction. As such, ongoing engagement with stakeholders will be important.</p> <p>Additionally, the Project is within the Rural Zone of the Cloncurry Shire Planning Scheme 2016 and is predominately used for low-intensity</p>	<ul style="list-style-type: none"> Host Landowner/ Leaseholder 	✓	✓	Small	Low	Negligible	<ul style="list-style-type: none"> Implement the recommendations and management measures stipulated within the Aviation Impact Assessment relevant to the uncertified aerodromes. A Preliminary Construction Environmental Management Plan (P-CEMP) has been prepared for the Project and will be revised, refined and implemented prior to the commencement of works. The P-CEMP will include provision of management measures relevant to biosecurity (weed and pest) management so as not to negatively impact on nearby pastoral activities. Continue to implement the SMP for the DRM, with the Proponent committed to undertaking ongoing community engagement throughout the life of the Project. Implement MMG's stakeholder grievance mechanism to ensure that concern/complaints received in relation to the Project are identified and acted upon. 	Negligible	Low	Negligible

Key Matter	Impact Description	Affected Stakeholders	Project Phase		Pre-Mitigation / Enhancement			Management Measures	Post-Mitigation / Enhancement		
			C	O	Magnitude	Likelihood	Significance		Magnitude	Likelihood	Significance
	cattle grazing and mining activities. The Project has been located such that it will integrate with the existing DRM site and not diminish the current pastoral activities of the Mt Roseby Station.										
	<p>Perceived impacts to neighbouring land values resulting from altered visual amenity and rural character.</p> <p>The Project has one leaseholder (McMillan family, Mt Roseby Station) and one landowner within the Micrositing Corridor (the State of Queensland). In addition, MMG operates the DRM adjacent to the Micrositing Corridor. Targeted consultation with the State/Federal Government, and Immediate Neighbours, has occurred as part of the Project (refer to Section 6) to address issues/concerns, and will be ongoing throughout the life of the Project.</p> <p>Given the Project is located within the Rural Zone of the Cloncurry Shire Planning Scheme 2016 and is predominately used for low-intensity cattle grazing (via lease) and mining (via lease), with the land title owned by the State of Queensland it is not anticipated to cause impacts to the underlying land values of the neighbouring properties.</p> <p>Additionally, given the distance of the Micrositing Corridor from Cloncurry, Kjabbi, and Mount Isa, the Landscape and Visual Impact Assessment (LVIA), prepared by Moir Landscape Architecture (2025), does not identify potential visual impacts relevant to the Broader Community.</p>	<ul style="list-style-type: none"> Host Landowner/ Leaseholder Immediate Neighbours 	✓	✓	Negligible	Low	Negligible	<ul style="list-style-type: none"> Continue to implement the SMP for the DRM, with the Proponent committed to undertaking ongoing community engagement throughout the life of the Project. Implement MMG's stakeholder grievance mechanism to ensure that concern/complaints received in relation to the Project are identified and acted upon. 	Negligible	Low	Negligible
	Construction and operational environmental impacts, including noise, telecommunications and electromagnetic interference, vibration, dust, visual amenity, lighting, and bushfire. This includes various impacts resulting from the construction phase, generally felt by people living in proximity to construction activities, such as degradation of air quality and health impacts because of increased generation of dust and particles from	<ul style="list-style-type: none"> Host Landowner/ Leaseholder Immediate Neighbours Broader Community State / Federal Government 	✓	✓	Medium	Low	Minor	<ul style="list-style-type: none"> A Preliminary Construction Environmental Management Plan (P-CEMP) has been prepared for the Project and will be revised, refined and implemented prior to the commencement of works. Implement the recommendations and management measures stipulated within the NIA, Preliminary Telecommunications Impact Assessment, and NHRA. 	Small	Low	Negligible

Key Matter	Impact Description	Affected Stakeholders	Project Phase		Pre-Mitigation / Enhancement			Management Measures	Post-Mitigation / Enhancement		
			C	O	Magnitude	Likelihood	Significance		Magnitude	Likelihood	Significance
	<p>land clearing, and the use of heavy vehicles and equipment.</p> <p>Several technical assessments have been conducted to consider the construction and operational environmental impacts of the Project on the Social Study Area, with the outcomes of these assessments identifying the following:</p> <ul style="list-style-type: none"> The Noise Impact Assessment (NIA), prepared by ERM (2025), considered the two sensitive receptors located in proximity to the Project (the McMillan Homestead and the DRM Accommodation Camp), and concluded that compliance with the relevant acoustic criteria is predicted at both locations. The Preliminary Telecommunications Impact Assessment, prepared by Middleton Group (2025), concluded that any potential impact on telecommunication services can be appropriately managed via stakeholder consultation and WTG placement is carried out with consideration of identified point-point radio links. It is noted that the Bureau of Meteorology has identified a potential impact to the Mount Isa radar. This is to be investigated further to determine the extent of the impact and the relevant management measures. The Natural Hazard Risk Assessment (NHRA), prepared by Covey Associates Pty Ltd (2025), confirms that bushfire has the potential to impact the Project throughout its operational life. Whilst there is a bushfire risk, however, if the bushfire mitigation measures detailed in the NHRA are adopted, the assessment determined that the Project does not increase the vulnerability of people, assets, and environment to potential bushfire impact. <p>Additionally, given the location of the Project, the Broader Community situated in Cloncurry and Mount Isa are unlikely to experience these impacts, with impacts limited to the sensitive receptors in proximity to the</p>							<ul style="list-style-type: none"> MMG to collaborate with the Bureau of Meteorology to determine suitable mitigation measures associated with the Mount Isa radar. Continue to implement the SMP for the DRM, with the Proponent committed to undertaking ongoing community engagement throughout the life of the Project. Implement MMG's stakeholder grievance mechanism to ensure that concern/complaints received in relation to the Project are identified and acted upon. 			

Key Matter	Impact Description	Affected Stakeholders	Project Phase		Pre-Mitigation / Enhancement			Management Measures	Post-Mitigation / Enhancement		
			C	O	Magnitude	Likelihood	Significance		Magnitude	Likelihood	Significance
	Micrositing Corridor (i.e. McMillian Homestead and the DRM Accommodation Camp).										
	<p>Altered landscape character, including visual amenity impacts. Changes to the character of the landscape will occur through the installation of Project infrastructure.</p> <p>The LVIA, prepared by Moir Landscape Architecture (2025) identifies that there are two sensitive receptors within the visual catchment (4.9 km from the nearest WTG) and study area (12.2 km from nearest WTG), the McMillian Homestead and the DRM Accommodation Camp.</p> <p>The LVIA considered scenic amenity and shadow flicker impacts relative to the sensitive receptors and concluded that while there are three viewpoints with a moderate visual impact, three viewpoints with a moderate-low visual impact, and two viewpoints with a low visual impact, the existing landscape has the ability to incorporate the Project with a relatively low degree of visual impact.</p> <p>Visual impacts to the township of Cloncurry and city of Mount Isa are not expected to occur due to their distance from the Project.</p>	<ul style="list-style-type: none"> Host Landowner/ Leaseholder Immediate neighbours 		✓	Small	High	Moderate	<ul style="list-style-type: none"> Communicate and implement the mitigation measures and recommendations provided in the LVIA (e.g. turbine colour, design, reflectiveness, rotational speed etc.) Continue to implement the SMP for the DRM, with the Proponent committed to undertaking ongoing community engagement throughout the life of the Project. Implement MMG’s stakeholder grievance mechanism to ensure that concern/complaints received in relation to the Project are identified and acted upon. 	Negligible	High	Negligible
	<p>Perception that the Project will negatively impact local water security, particularly during periods of drought within the Social Study Area.</p> <p>As outlined in Section 2.2.2, Project water demand will vary over time dependent upon the stages of work. Potable water is intended to be sourced from the existing Sunwater pipeline which services the DRM, with the existing catchment dams around the DRM to be used to provide lower quality water (construction works) where testing confirms suitability.</p> <p>The Proponent is required to secure the appropriate permits and approvals for the use of the water for construction purposes.</p> <p>Cumulative Impact Considerations: The pressure on water infrastructure, water resources, and water supply systems could be amplified due to the cumulative impact of multiple projects</p>	<ul style="list-style-type: none"> Host Landowner/ Leaseholder Immediate neighbours Broader Community 	✓		Medium	Medium	Moderate	<ul style="list-style-type: none"> Develop and implement a Water Sourcing Strategy for the Project. Continue to implement the SMP for the DRM, with the Proponent committed to undertaking ongoing community engagement throughout the life of the Project. Implement MMG’s stakeholder grievance mechanism to ensure that concern/complaints received in relation to the Project are identified and acted upon. 	Medium	Low	Minor

Key Matter	Impact Description	Affected Stakeholders	Project Phase		Pre-Mitigation / Enhancement			Management Measures	Post-Mitigation / Enhancement		
			C	O	Magnitude	Likelihood	Significance		Magnitude	Likelihood	Significance
	co-existing within the Social Study Area (refer to Section 4.5).										
	<p>Altered landscapes have the potential to impact tangible and intangible Aboriginal heritage, which, in turn, has the potential to cause emotional stress and anguish to Aboriginal Groups, as well as result in a mutual shared loss of values and/or artefacts of importance across the Broader Community.</p> <p>The Proponent recognises the importance of engagement with the Kalkadoon People, who are the registered Native Title holders of the Micrositing Corridor and surrounding areas. Accordingly, MMG and the Kalkadoon People have been engaging in relation to the Project since July 2024, culminating in an ILUA for the Project.</p>	<ul style="list-style-type: none"> Aboriginal Group 	✓	✓	Medium	Medium	Moderate	<ul style="list-style-type: none"> Implement the provisions of the ILUA agreed upon between the Proponent and the Kalkadoon People, including the cultural heritage survey works requirements in order to ensure respect for cultural values, sites and protocols. Continue to implement the SMP for the DRM, with the Proponent committed to undertaking ongoing community engagement throughout the life of the Project, including with the KNTAC, to support governance, planning and partnership alignment. 	Medium	Low	Minor

8. MONITORING AND MANAGEMENT FRAMEWORK

This section provides an overview of the recommended monitoring framework for the social impact management and mitigation measures put in place during the construction and operation phases of the Project.

For the post-mitigation impact significant levels to be achieved, as outlined in **Section 6**, the social impact management measures and mitigations will need to be monitored in accordance with the framework plan outline in **Table 8-1**.

The objectives of monitoring are to:

- Verify the predicted impacts and identify any other impacts that may arise;
- Verify that management measures are being implemented as planned;
- Assess the effectiveness of the management measures; and
- Provide data for any necessary regulatory reporting to the State Government or other internal compliance reporting.

Accordingly, **Table 8-1** identifies the following:

- **Management Goals:** The overarching objective is to minimise the negative social impacts associated with the Project and enhance the positive impacts. As such, specific goals corresponding to each impact topic have been provided. These can be used to determine whether the management measures have been effectively implemented.
- **Proposed Monitoring Activities:** The monitoring activities proposed will ensure that relevant data is collected (e.g. the performance indicators) during the various phases of the Project to ensure the effectiveness of the management measures.
- **Performance Indicators:** The indicators provide a mechanism to determine whether the goals have been met.
- **Monitoring Frequency:** Outlines the period for data collection.
- **Responsible Person:** Assigns the relevant person and/or entity to take charge of the proposed monitoring in order achieve the management goal.

TABLE 8-1 PROPOSED MONITORING FRAMEWORK

Management Goal	Monitoring Activity	Performance Indicator	Monitoring Frequency	Responsibility
Community and Stakeholder Engagement				
Minimise community grievances	<ul style="list-style-type: none"> Record queries and complaints received from stakeholders 	<ul style="list-style-type: none"> Number of complaints Percentage of complaints satisfactorily resolved Number of complaints relating to reduced community cohesion 	Ongoing	Proponent
Distribute benefits from the Project among the Broader Community (as stipulated by the CBA)	<ul style="list-style-type: none"> Record and publish information on community programs and investment initiatives included within and/or referenced by the agreed CBA. 	<ul style="list-style-type: none"> Number and value of community programs and investment initiatives 	Annually	Proponent
Workforce Management				
Maximise local employment	<ul style="list-style-type: none"> Record local employment Record employee retention rate Ensure major contractors report on local employment Record the number of training programs undertaken 	<ul style="list-style-type: none"> Percentage of people from the Social Study Area employed by the Project (including contractors) Number of training programs delivered Number of apprenticeships involved 	Quarterly	Proponent / Contractor
Minimise community grievances related to construction workforce	<ul style="list-style-type: none"> Record queries and complaints received from stakeholders 	<ul style="list-style-type: none"> Number of complaints Percentage of complaints satisfactorily resolved 	Ongoing (construction phase)	Proponent
Housing and Accommodation				
Minimise potential impacts on accommodation availability, social infrastructure, and emergency services	<ul style="list-style-type: none"> Record local employment Record employee retention rate Ensure major contractors report on local employment Record queries and complaints received from stakeholders 	<ul style="list-style-type: none"> Percentage of people from the Social Study Area employed by the Project Number of complaints Percentage of complaints satisfactorily resolved 	Ongoing (construction phase)	Proponent

Management Goal	Monitoring Activity	Performance Indicator	Monitoring Frequency	Responsibility
Local Business and Industry Procurement				
Maximise local procurement	<ul style="list-style-type: none"> Report on the number and value of contracts with local and regional businesses 	<ul style="list-style-type: none"> Percentage of local and regional businesses involved in the Project Percentage of total value of relevant Project expenditure awarded to local and regional businesses within the Social Study Area 	Quarterly	Proponent / Contractor
Health and Community Well-being				
Minimise potential traffic inconveniences, safety concerns and contributions to road deterioration.	<ul style="list-style-type: none"> Record queries and complaints received from stakeholders 	<ul style="list-style-type: none"> Number of complaints Percentage of complaints satisfactorily resolved 	Quarterly	Proponent / Contractor
Minimise potential environmental and social amenity impacts (i.e. noise, vibration, dust) on stakeholders / receptors.	<ul style="list-style-type: none"> Record queries and complaints received from stakeholders 	<ul style="list-style-type: none"> Number of complaints Percentage of complaints satisfactorily resolved 	Quarterly	Proponent / Contractor
Minimise potential impact to local water security	<ul style="list-style-type: none"> Monitor Project-related water usage and sourcing Record queries and complaints received from stakeholders 	<ul style="list-style-type: none"> Compliance with Sunwater licence conditions Number of complaints Percentage of complaints satisfactorily resolved 	Quarterly	Proponent
Impact on Tangible and Intangible Aboriginal Cultural Heritage	<ul style="list-style-type: none"> Record number of tangible cultural heritage chance finds Number of Project-related impacts to tangible cultural heritage items. Record number of complaints received about impacts to intangible heritage 	<ul style="list-style-type: none"> Percentage of chance finds comply with ILUA requirements Number of Project-related impacts to tangible cultural heritage items 	Quarterly	Proponent

9. CONCLUSION

ERM has been engaged by MMG to prepare an SIA for the Project in accordance with the provisions of the SIA Guideline. The SIA provides the necessary information to support the development and execution of a CBA.

The purpose of the SIA is to provide an understanding of the Project's potential social impacts, and how these social impacts are identified, assessed, managed and monitored. Accordingly, the report comprises the assessment undertaken for the Project, inclusive of the social baseline (refer to **Section 5**), stakeholder engagement outcomes (refer to **Section 6**), potential social impacts (refer to **Section 7**) and a preliminary monitoring and management framework (refer to **Section 8**).

The SIA identified a total of 18 potential social impacts (direct and indirect; positive and negative) across the construction and operation phases of the Project that have the potential to impact stakeholders within the Social Study Area. Of those potential social impacts, 15 were assessed as negative and three were assessed as positive. The three positive impacts comprised:

- Increased potential to secure the long term operational future of the DRM, which will provide benefit from sustained economic activity to the Social Study Area;
- Increased demand for labour creates direct and indirect employment opportunities for the local community within the Social Study Area; and
- Increased demand for goods and services helps to stimulate the local economies through greater indirect spend.

No potential social impacts were assessed as having a residual (post-mitigation) impact significance of 'Major'. Of the potential social impacts remaining, one in the construction phase was determined to have residual impact of 'Moderate' (Negative) being:

- Transportation of materials and equipment to the Micrositing Corridor has the potential to cause traffic safety concerns for road users along the haulage routes within Cloncurry.

The remainder of the impacts (negative) were assessed as having a 'Minor' or 'Negligible' residual impact.

Across all identified social impacts, management measures, and monitoring have been devised, and have already been, or will be, adopted by MMG (or their appointed contractor) for the Project. These measures, and the associated social impact monitoring framework, will also be embedded into MMG's internal systems and processes.

In addition to direct/indirect social impacts associated with the Project, cumulative social impacts from concurrent projects within the Social Study Area (refer to **Section 4.5**), were also considered.

With respect to the CBA, it is anticipated that whilst positive and negative impacts will occur within the Social Study Area, the negative impacts have a higher likelihood of occurrence within the Cloncurry Shire Council LGA, namely the township of Cloncurry. Furthermore, it is understood that DRM currently implements a range of community programs which provide avenues to provide direct and indirect support to stakeholders within the Social Study Area (refer to **Section 7.1**). These programs have been effective in meeting the needs, and addressing the concerns, of the stakeholders – as attested to by the outcomes of the March

2024 Stakeholder Perception Survey, wherein MMG is recognised by the local community as having a strong commitment to community events and support programs/initiatives.

Therefore, given the higher potential for negative impacts to occur with Cloncurry compared to other areas of the Social Study Area, and the interrelationship between DRM and the Project, it is recommended that a CBA with Cloncurry Shire Council be entered into.

10. REFERENCES

- ABS 2018, *Technical Paper: Socio-Economic Indexes for Australia (SEIFA), 2016*, viewed 16 June 2025.
[https://www.ausstats.abs.gov.au/ausstats/subscriber.nsf/0/756EE3DBEFA869EFCA258259000BA746/\\$File/SEIFA%202016%20Technical%20Paper.pdf](https://www.ausstats.abs.gov.au/ausstats/subscriber.nsf/0/756EE3DBEFA869EFCA258259000BA746/$File/SEIFA%202016%20Technical%20Paper.pdf).
- ABS 2024, *Socio-Economic Indexes for Australia (SEIFA)*, viewed 16 June 2025,
<https://www.abs.gov.au/websitedbs/censushome.nsf/home/seifa>.
- AIHW 2024, *Housing Affordability*, viewed 16 June 2025
[Housing affordability - Australian Institute of Health and Welfare](#)
- Bina Sustainable Solutions Pty Ltd 2024, *Dugald River Socio-economic Baseline Study*, Dugald River Mine.
- Bina Sustainable Solutions Pty Ltd 2024, *Dugald River Social Impact and Opportunities Assessment*, Dugald River.
- Bina Sustainable Solutions Pty Ltd, 2024, *MMG Dugald River Perception Survey – Stakeholder Engagement Analysis*, Dugald River.
- Aviation Projects Pty Ltd 2025, *Aviation Impact Assessment*, Dugald River Wind Farm.
- Covey Associates Pty Ltd 2025, *Natural Hazard Risk Assessment*, Dugald River Wind Farm.
- Department of State Development, Infrastructure and Planning. 2025. *Draft Social impact assessment guideline (Version 2)*, viewed 11 June 2025.
- Department of Women, Aboriginal and Torres Strait Islander Partnerships and Multiculturalism 2025. *Language Services Policy*, viewed 16 June 2025.
[Language Services Policy | Department of Women, Aboriginal and Torres Strait Islander Partnerships and Multiculturalism](#)
- Environmental Resources Management Australia Pty Ltd 2025, *Noise Impact Assessment*, Dugald River Wind Farm.
- Environmental Resources Management Australia Pty Ltd 2025, *Preliminary Construction Environmental Management Plan*, Dugald River Wind Farm.
- Middleton Group 2025, *Preliminary Telecommunications Impact Assessment*, Dugald River Wind Farm.
- MMG Dugald River Pty Ltd 2025, *Community and Social Performance – Work Quality Requirement*, Dugald River Mine.
- MMG Dugald River Pty Ltd 2025, *Management of Grievances Procedure*, Dugald River.
- MMG Dugald River Pty Ltd 2025, *MMG Sponsorship Program – Application Kit*, Dugald River.
- MMG Dugald River Pty Ltd 2025, *Social Commitments and Agreements Procedure*, Dugald River.
- MMG Dugald River Pty Ltd 2025, *Social Performance Standard*, Dugald River.
- MMG Dugald River Pty Ltd 2025, *Social Impact Management Plan*, Dugald River.
- MMG Dugald River Pty Ltd 2025, *Stakeholder Engagement Report*, Dugald River Wind Farm.

Moir Landscape Architecture Pty Ltd 2025, *Landscape and Visual Impact Assessment*, Dugald River Wind Farm.

Rex J Andrews Engineered Transportation 2024, *Route Assessment*, Dugald River Hybrid Windfarm Project.



APPENDIX A INDIGENOUS LAND USE AGREEMENT



Extract from Register of Indigenous Land Use Agreements

NNTT number	QI2024/015
Short name	Dugald River Wind Farm Project ILUA
ILUA type	Body Corporate
Date registered	14/04/2025
State/territory	Queensland
Local government region	Cloncurry Shire Council

Description of the area covered by the agreement

The **ILUA Area** is the area described and depicted on the map in Schedule 2.

[A copy of Schedule 2 is attached to this register extract.

The following general description of the agreement area has been provided by the National Native Title Tribunal to assist people to understand the location of the agreement area. It is provided for information only and should not be considered part of the Register of ILUAs:

The agreement area covers about 33.5 sq km and is located west of the Burke Developmental Road, approx. 15 km north west of Cloncurry.]

Parties to agreement

Applicant

Party name	MMG Dugald River Pty Limited ABN 19 083 405 556 (MMG)
Contact address	c/- Ashurst Level 38, 123 Eagle Street Brisbane QLD 4000

Other Parties

Party name	Kalkadoon Native Title Aboriginal Corporation RNTBC ICN 7639 on behalf of the Kalkadoon People (KNTAC)
Contact address	c/- Thomas-Greer Legal PO Box 6082 Fairfield Gardens QLD 4103

Period in which the agreement will operate

Start date	29/11/2024
End Date	not specified

3.1 Commencement and termination

This Agreement commences on the Execution Date and continues until the earliest of:

- (a) the Wind Farm Project End Date;
- (b) the date MMG issues a Project Termination Notice;
- (c) MMG and KNTAC otherwise agreeing in writing to terminate this Agreement; and
- (d) following the Registration of this Agreement on the Register, the date this Agreement is removed from the Register.

Execution Date means the date on which this Agreement is taken to have been signed by the last person required to do so.

Modify means extend, renew, vary, replace, convert, modify, correct, alter, amend or change. **Modification** has a corresponding meaning.

Native Title Act means the *Native Title Act 1993* (Cth).

Project Termination Notice means a notice provided by MMG to KNTAC which specifies that the Wind Farm Project will not proceed for whatever reason.

Register means the Register of Indigenous Land Use Agreements, with that term having the meaning given in the Native Title Act.

Registered means that an ILUA appears on the Register, and **Registration** has a corresponding meaning.

Stage 2A Wind Farm Project means the first stage of the Wind Farm Project which will involve the construction and operation of up to 8 wind turbine generators and other associated activities primarily authorised in accordance with the Wind Farm Project Development Approval.

Stage 2B Wind Farm Project means the second stage expansion of the Wind Farm Project which will involve the construction of up to 16 additional wind turbine generators and other associated activities primarily authorised in accordance with the Wind Farm Project Development Approval.

Wind Farm Project means the development, construction, commissioning, operation, Modification, expansion, extension, maintenance, decommissioning and rehabilitation of the equipment and infrastructure in the ILUA Area associated with the "Dugald River Wind Farm" and includes the construction of up to approximately 24 wind turbine generators, access tracks, electrical connections, powerlines and transmission lines, substations, energy metering, energy storage systems, operation and maintenance facilities, cabling, construction compounds, offsets, vegetation management, temporary construction laydown areas and other activities necessary or incidental to the project, with project development planned to take place over stages commencing with the Stage 2A Wind Farm Project and potentially then the Stage 2B Wind Farm Project.

Wind Farm Project Development Approval means a development approval or approvals granted in accordance with the *Planning Act 2016* (Qld) that authorise assessable development for the Stage 2A Wind Farm Project and/or Stage 2B Wind Farm Project, as the case may be.

Wind Farm Project End Date means the date that MMG gives KNTAC notice of the permanent cessation and closure of the Wind Farm Project including decommissioning and rehabilitation of the equipment and infrastructure in the ILUA Area associated with the "Dugald River Wind Farm".

Statements of the kind mentioned in ss. 24EB(1) or 24EBA(1) or (4)

8.1 Consent to Agreed Acts

The Kalkadoon Parties agree with, consent to and support, and continue to agree with, consent to and support:

- (a) MMG's ongoing access to and use of the ILUA Area;
- (b) the Grant or Modification of every:
 - (i) Approval; and
 - (ii) Interest,whether before or after the Commencement Date, and considered by MMG as necessary or desirable for the development and operation of the Wind Farm Project which may include:
- (c) the Grant of one or more easements;
- (d) the Grant of any Approval or Interest in relation to the electricity requirements including the construction and operation of electricity transmission lines, Grant of authority and registration of suitable land tenure for electricity transmission lines;

- (e) the subdivision of the Wind Farm Land Title;
- (f) the addition of a purpose to all or part of the Wind Farm Term Lease to authorise the Wind Farm Project; and
- (g) the Grant of a sublease of the whole or part of the Wind Farm Land Title, (collectively, the **Agreed Acts**).

16.4 Consent to Future Acts – Native Title Act section 24EB(1)

- (a) Each party acknowledges and agrees that the Agreed Acts may be or may comprise Future Acts to which the provisions of Part 2 of Division 3 of the Native Title Act may apply.
- (b) For the purposes of section 24EB(1) of the Native Title Act, the parties consent to all Agreed Acts (to the extent they involve Future Acts) without conditions but in accordance with this Agreement.
- (c) For the avoidance of doubt, the consent in this clause includes consent to the doing of any and all things ancillary to the doing of the Agreed Acts, with the intent that such statement of consent satisfies the requirement of section 24EB(1)(b) of the Native Title Act in respect of each of those things.

16.6 Right to Negotiate Procedure does not apply – Native Title Act section 24EB(1)(c)

The Right to Negotiate Procedure does not apply to any of the Agreed Acts, with the intent that such statement satisfies the requirement of section 24EB(1)(c) of the Native Title Act.

Approval means any authorisation, lease, sublease, licence, permit, approval, certificate, consent, renewal, direction or notice inclusive of any Modification, and includes an approval from a Minister, Government Agency or other competent authority.

Approved Determination of Native Title has the meaning given in the Native Title Act.

Commencement Date means the date this Agreement is Registered on the Register.

Common Law Holders has the meaning given in the Native Title Act.

Future Act has the meaning given in the Native Title Act.

Government Agency means any Commonwealth, state or local government, Parliament or any authority or government agency, board, court or instrumentality, Minister or other person having authority or delegation to act on behalf of any of those entities or government, including the Crown in right of the State, Crown in right of the Commonwealth, the Governor, the Governor in Council and the Governor in Council.

Grant means grant, dedicate, proclaim, vest, place, extend, renew, re-grant, or remake, or an extension of the term, renewal, or amendment from time to time.

Interest means any:

- (a) legal or equitable interest in land or waters;
- (b) right to occupy, use or traverse land or waters;
- (c) easement, charge, power or licence over or in connection with land or waters; or
- (d) authorisation, permit or licence from any Government Agency, whether Granted before, on or after the Commencement Date.

Kalkadoon Claim is Federal Court of Australia native title determination (claimant) application QUD579/2005.

Kalkadoon Determination means:

(a) an Approved Determination of Native Title made by the Federal Court on 12 December 2011 in *Doyle on behalf of the Kalkadoon People #4 v State of Queensland (No 3)* [2011] FCA 1466 in relation to the Kalkadoon Claim, including as varied pursuant to any appeal from the Kalkadoon Claim or pursuant to section 13(1)(b) of the Native Title Act; and

(b) any other Approved Determination of Native Title that the Kalkadoon People hold Native Title over the ILUA Area which may be made in the future following revocation of the existing determination referred to in paragraph (a) above or in addition to that existing determination.

Kalkadoon Parties means KNTAC and the Kalkadoon People.

Kalkadoon People or **Person** means the Common Law Holders of Native Title in relation to the area subject to the Kalkadoon Determination.

Minister has the meaning given in the *Acts Interpretation Act 1954* (Qld).

Native Title has the meaning given in the Native Title Act.

Right to Negotiate Procedure means the process set out in Subdivision P of Division 3 of Part 2 of the Native Title Act.

State means the State of Queensland.

Wind Farm Land Title means Lot 92 on SP303378 title reference 17669227 and any title issued in replacement or as a result of subdivision or resurvey of that title.

Wind Farm Term Lease means Rolling Term Lease PPH 13/3692 issued over the Wind Farm Land Title and any lease issued in replacement or substitution over all or part of the Wind Farm Land Title.

Attachments to the entry

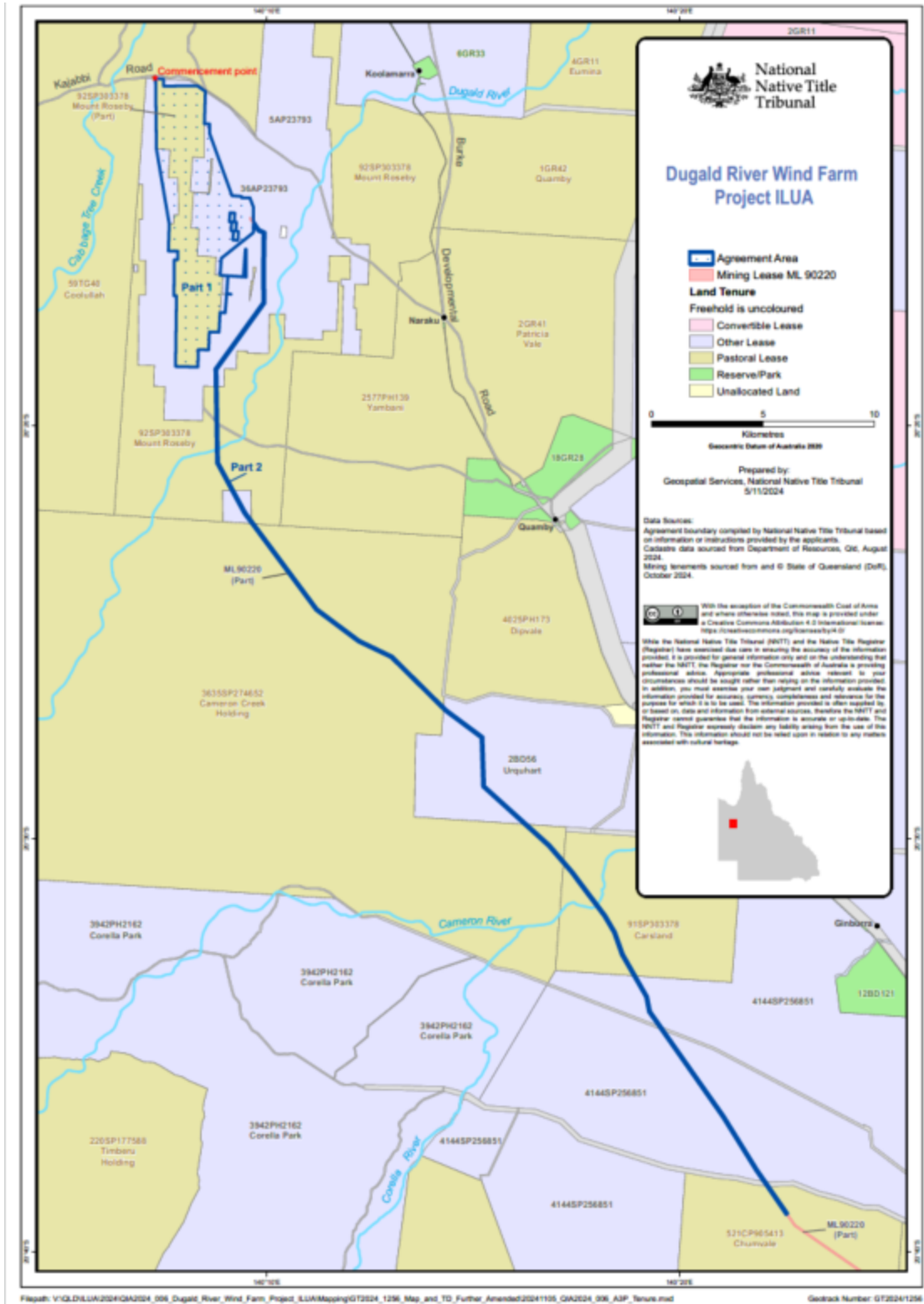
[QI2024_015 Schedule 2 - Description and Map of ILUA Area.pdf](#)

Schedule 2

Description and Map of ILUA Area

The ILUA Area, as at the Execution Date, means the area as shown in the map and described below.

Map



Written description

External boundary description

The agreement area covers all the land and waters within the external boundaries described as:

Part 1

Commencing on the southern boundary of Kajabbi Road at the north western most corner of the central western severance of Lot 92 on Survey Plan SP303378 (Mount Roseby) and extending generally easterly and southerly along that lot boundary to the intersection with a western prolongation of the northern boundary of Mining Lease ML2556, at approx. Latitude 20.211420° South; then easterly along that prolongation to the north western corner of that mining lease; then southerly along the western boundary of that mining lease to the north eastern corner of Mining Lease ML100382; then south easterly to the north western corner of Mining Lease ML2498; then easterly and southerly along the northern and eastern boundaries of that mining lease to the north western corner of Mining Lease ML2601; then easterly along the northern boundary of that mining lease to its north eastern corner; then south easterly to the intersection of Latitude 20.244899° South with a buffer line 150m eastward of the eastern boundary of Mining Lease ML2601; then southerly along that buffer line and a buffer line 150m eastward of the eastern boundary of Mining Lease ML2501 to its intersection with the northern boundary of Mining Lease ML2502; then south westerly to the north western corner of Mining Lease ML2479; then southerly along the western boundary of that mining lease to a northern boundary of the central western severance of Lot 92 on Survey Plan SP303378 (Mount Roseby); then generally easterly, northerly, easterly, southerly and westerly along the boundaries of that lot to the northern prolongation of the western boundary of Mining Lease ML2480, at approx. Longitude 140.151019° East; then southerly along that prolongation and the western boundary of that mining lease to a northern boundary of the central western severance of Lot 92 on Survey Plan SP303378 (Mount Roseby); then easterly, southerly and westerly along the northern, eastern and southern boundaries of that lot to again the western boundary of Mining Lease ML2480; then southerly along the western boundaries of that mining lease, Mining Lease ML90050 and Mining Lease ML2482 to the south western corner of Mining Lease ML2482; then westerly along a prolongation westerly of the southern boundary of that mining lease to an eastern boundary of the central western severance of Lot 92 on Survey Plan SP303378 (Mount Roseby), at approx. Latitude 20.287577° South; then generally south westerly, westerly and generally northerly along the eastern, southern and western boundaries of that lot to a north western corner at approx. Latitude 20.251755° South; then north westerly to a south western corner of that lot at approx. Latitude 20.221400° South; then northerly along the western boundary of that lot back to the commencement point.

Part 1 Area excludes the following land parcels:

Lot 27 on CP15753

Lot 35 on CP15753

Lot 36 on CP15753

Part 2

Those parts of Mining Lease ML90220 that fall within the external boundary as defined in Schedule 5A of Native Title Determination QUD579/2005 Kalkadoon People #4 (QCD2011/007) as determined by the Federal Court on 12 December 2011.

Note

Data Reference and source

- Agreement boundary compiled by National Native Title Tribunal based on information or instructions provided by the applicants.
- Native title determination QUD579/2005 Kalkadoon People #4 (QCD2011/007) as determined by the Federal Court on 12 December 2011.
- Cadastre data sourced from Department of Resources, Qld, August 2024.
- Mining tenements sourced from and © State of Queensland (DoR), October 2024.

Reference datum

Geographical coordinates are referenced to the Geocentric Datum of Australia 2020 (GDA2020), in decimal degrees and are based on the spatial reference data acquired from the various custodians at the time.

Use of Coordinates

Where coordinates are used within the description to represent cadastral or topographical boundaries or the intersection with such, they are intended as a guide only. As an outcome of the custodians of cadastral and topographic data continuously recalculating the geographic position of their data based on improved survey and data maintenance procedures, it is not possible to accurately define such a position other than by detailed ground survey.

Prepared by Geospatial Services, National Native Title Tribunal (5 November 2024)



ERM

ERM HAS OVER 140 OFFICES ACROSS THE FOLLOWING
COUNTRIES AND TERRITORIES WORLDWIDE

Argentina	Mozambique
Australia	Netherlands
Belgium	New Zealand
Brazil	Panama
Canada	Peru
China	Poland
Colombia	Portugal
Denmark	Romania
France	Singapore
Germany	South Africa
Hong Kong	South Korea
India	Spain
Indonesia	Switzerland
Ireland	Taiwan
Italy	Thailand
Japan	UAE
Kazakhstan	UK
Kenya	US
Malaysia	Vietnam
Mexico	

ERM's Brisbane Office

Level 9
260 Queen Street
Brisbane Qld 4000

T +61 7 3839 8393

www.erm.com